

Proper use of the sanitary sewer system is important to the longevity of the service and infrastructure. Wastewater generally consists of used water from toilets, bathtubs, and sinks. Certain items can be detrimental to the collection system and wastewater treatment plant. Do not add the following to the sanitary sewer system:

- Fats, oils, and grease
- Clothes, rags, diapers
- Nuts, bolts, screws
- Gasoline, motor oil, paints
- Medicines



Our Way Forward

Currituck County will be smoke testing the collection system in Spring 2020 to find sources of I&I. This common, non-toxic test will allow the County to identify problem areas in the system to repair or replace. Additional information will be sent out prior to testing. Residents should take this time to fix any known problems on their property that can contribute to I&I (e.g. broken plumbing, missing cleanout cap). Homeowners found with any deliberate source contributing to I&I may be fined.



[Example of sewer smoke testing](#)

By Currituck County Code of Ordinances, Section 13-139, draining stormwater or groundwater into the sanitary sewer system is prohibited. Fines for illegal connections can be up to \$1,000 per day per violation.

Currituck County encourages residents to use good judgment when using the sanitary sewer service and to share this information with your neighbors. Please contact the departments below if there are any questions or concerns.

Currituck County Public Utilities Department

Public Utilities Director

Will Rumsey
(252) 232-6065

Will.Rumsey@CurrituckCountyNC.gov

Wastewater Superintendent

Rod Holley

Rod.Holley@CurrituckCountyNC.gov

Currituck County Engineering Department

County Engineer

Eric Weatherly, PE
(252) 232-6035

Eric.Weatherly@CurrituckCountyNC.gov

Engineer Technician

Nick Ingold
(252) 232-6048

Nick.Ingold@CurrituckCountyNC.gov



MOYOCK REGIONAL WASTEWATER TREATMENT PLANT

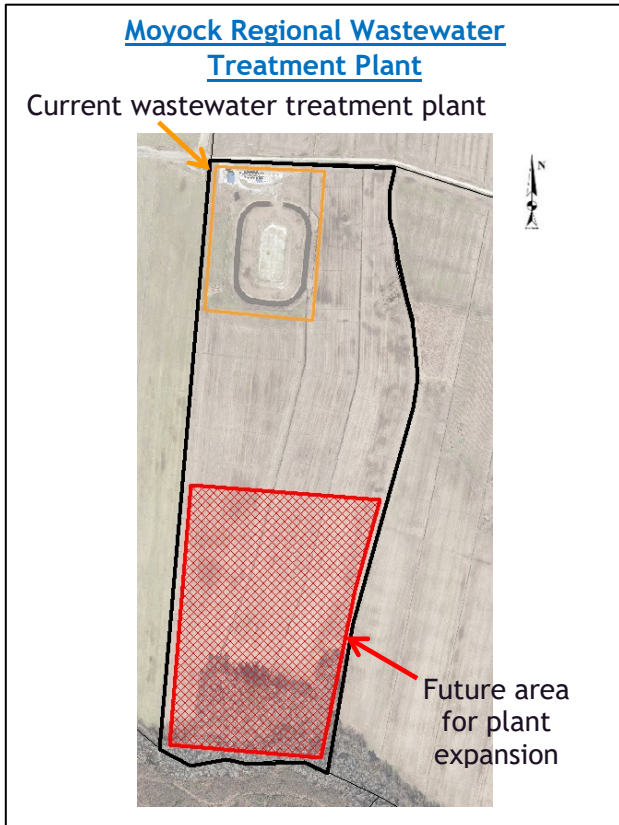
SANITARY SEWER SERVICE INFORMATION

Purpose

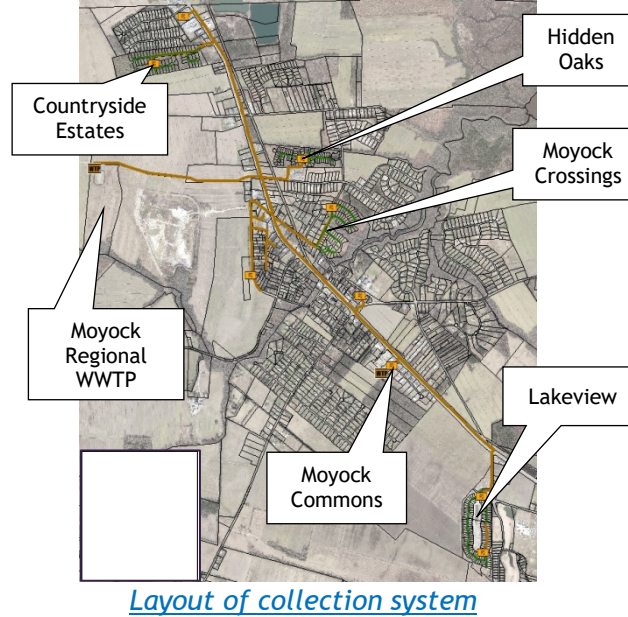
This brochure provides education to the public on the sanitary sewer service and the importance of proper usage for the Moyock Regional Wastewater Treatment Plant.

Background

Currituck County provides sanitary sewer service for over 300 sewer connections in Moyock. This service, operated and maintained by Currituck County Wastewater Department, can treat 99,000 gallons per day of wastewater at the Moyock Regional Wastewater Treatment Plant (WWTP). This plant will expand to treat up to 300,000 gallons per day by Summer 2021.



Over 10 miles of underground piping and 8 pump stations make up the collection system for Moyock Regional Wastewater Treatment Plant. Wastewater from homes flow through these pipes by gravity to a pump station. The pump station then pumps it to the wastewater treatment plant where it gets treated and disposed. Currituck County is responsible for the operation and maintenance of the collection system up to the homeowner's property line.



Issues

Flooding events have negative impacts on the wastewater treatment plant due to Inflow and Infiltration (I&I). This term describes the ways stormwater and groundwater enters into the sanitary sewer system.

Inflow is water that enters into the sanitary sewer system from **above-ground sources** (e.g. stormwater). Sources include:

- Manhole covers
- Roof drain & cleanout connections



Examples of Inflow sources

Infiltration is water that enters into the sanitary sewer system from **below-ground sources** (e.g. groundwater). Sources include:

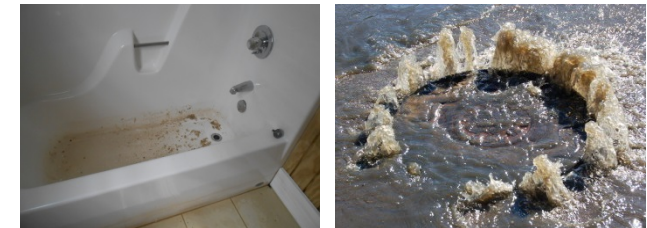
- Defective pipe joints
- Cracked or collapsed pipes



Example of Infiltration source - Inside view of water coming into sanitary sewer pipe

I&I is a problem because:

- It overloads the capacity of the wastewater treatment plant
- It reduces the effectiveness of the treatment process
- It causes raw sewage to backup into homes and streets



Sewage backup due to Inflow & Infiltration