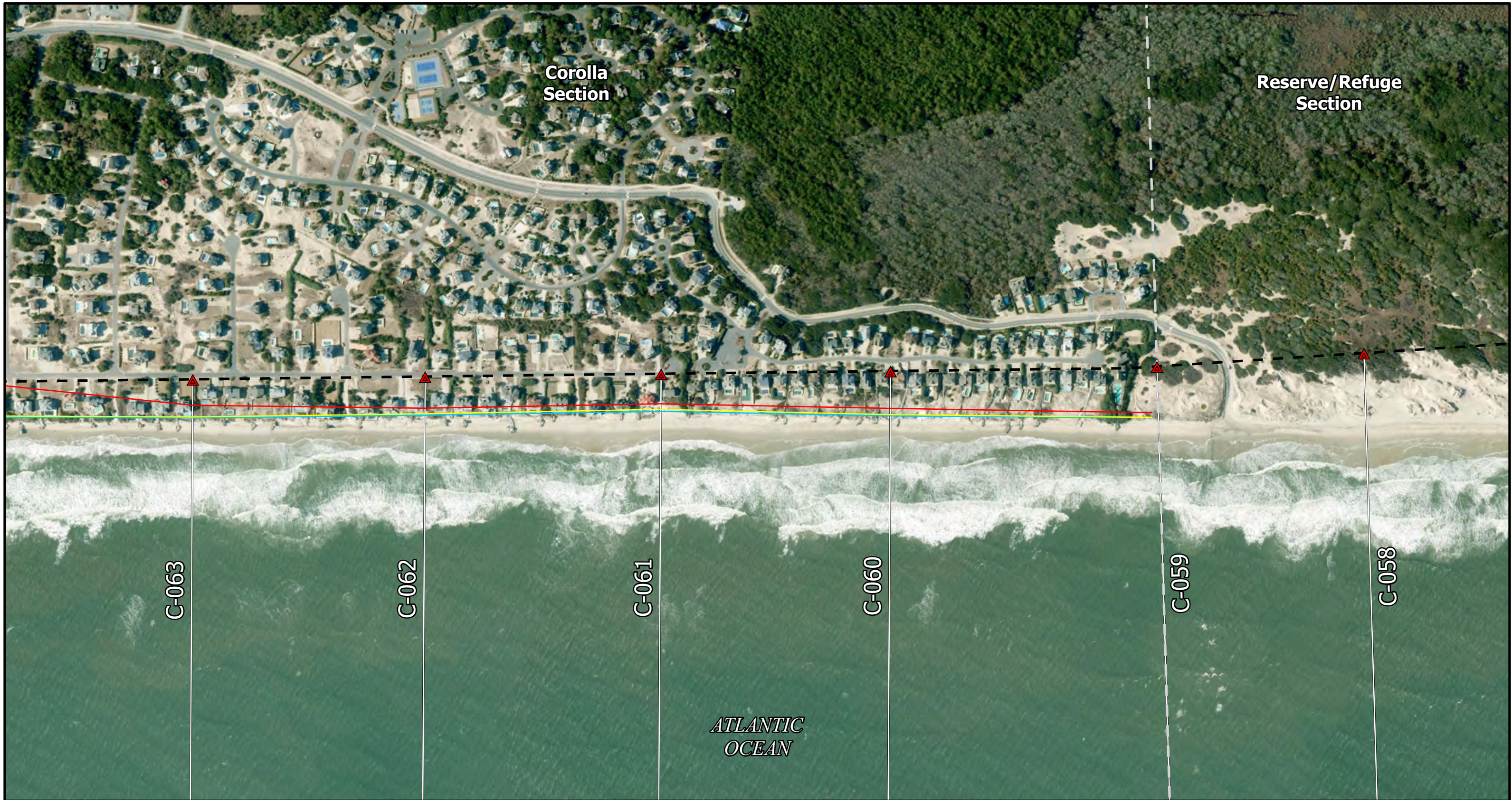


Appendix B  
Impact Line Maps for Three (3) Simulated  
Storms Along the Corolla and Pine Island Sections

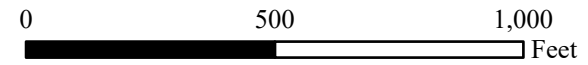
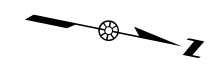


**NOTES**

- 1) Aerial imagery collected between January and March 2024 by the NC Orthoimagery Program
- 2) Impact Lines represent the connected impact points developed through the XBEACH 1D storm simulations of each of the three storms based on 2025 conditions.

**LEGEND**

- Profile Stations
- Beach Profile Transects
- Section Area Boundary
- Baseline
- Hurricane Isabel 2025 Existing Conditions
- Synthetic 25-Year Storm 2025 Existing Conditions
- 2009 Nor'easter 2025 Existing Conditions

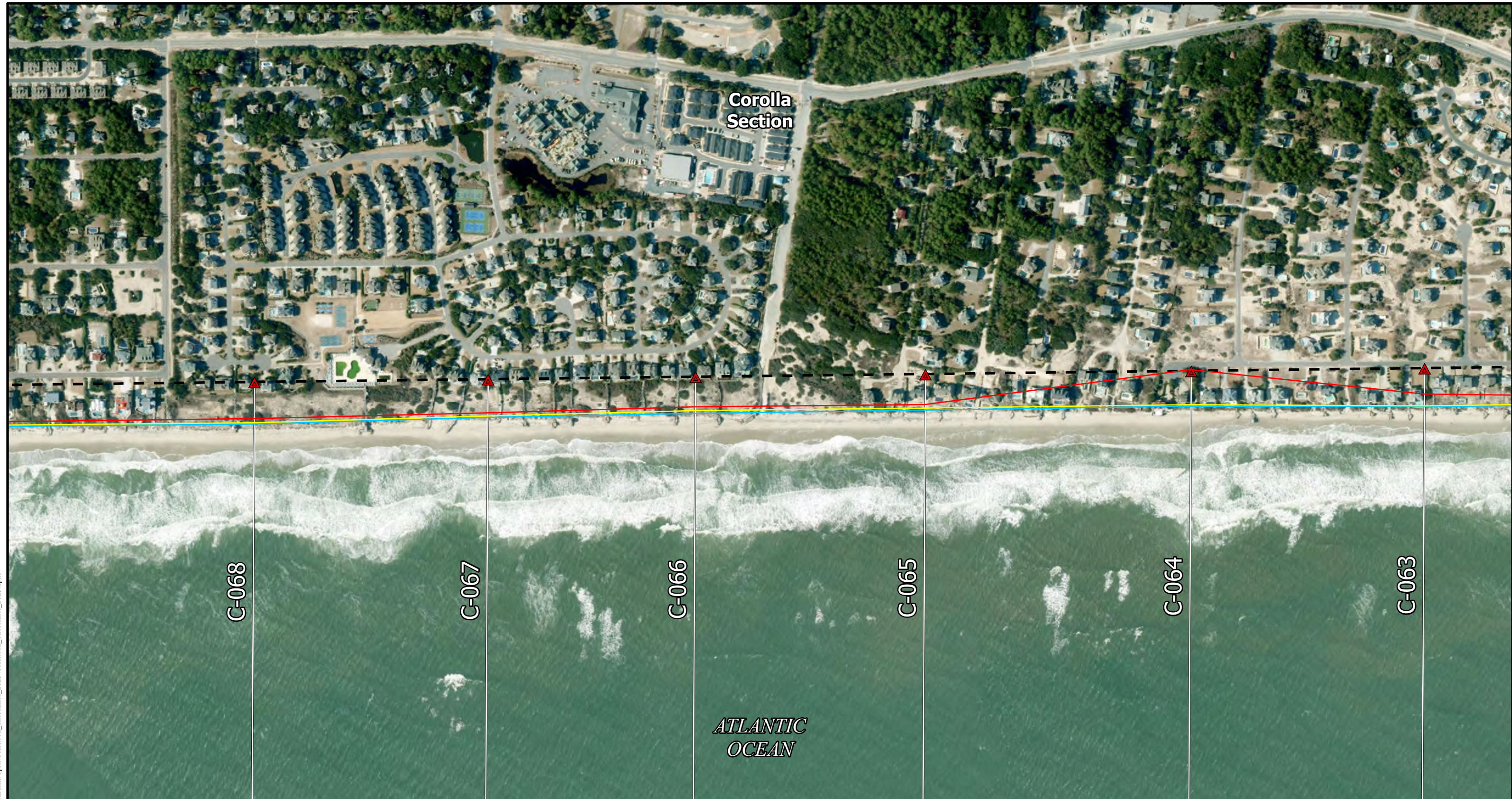


**TITLE**

Appendix B - Impact Line Maps for Three (3) Simulated Storms Along the Corolla and Pine Island Sections

COASTAL PROTECTION ENGINEERING OF NORTH CAROLINA, INC.  
 4038 Masonboro Loop Road  
 Wilmington, NC 28409  
 PH (910) 399-1905

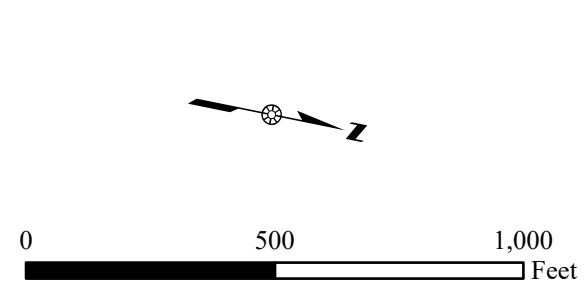
Path: E:\Projects\USA\NC\Currituck\2020\Currituck\aprx\Currituck\_Shorelines\_2025.aprx



**NOTES**

- 1) Aerial imagery collected between January and March 2024 by the NC Orthoimagery Program
- 2) Impact Lines represent the connected impact points developed through the XBEACH 1D storm simulations of each of the three storms based on 2025 conditions.

- LEGEND**
- Profile Stations
  - Beach Profile Transects
  - Section Area Boundary
  - Baseline
  - Hurricane Isabel 2025 Existing Conditions
  - Synthetic 25-Year Storm 2025 Existing Conditions
  - 2009 Nor'easter 2025 Existing Conditions

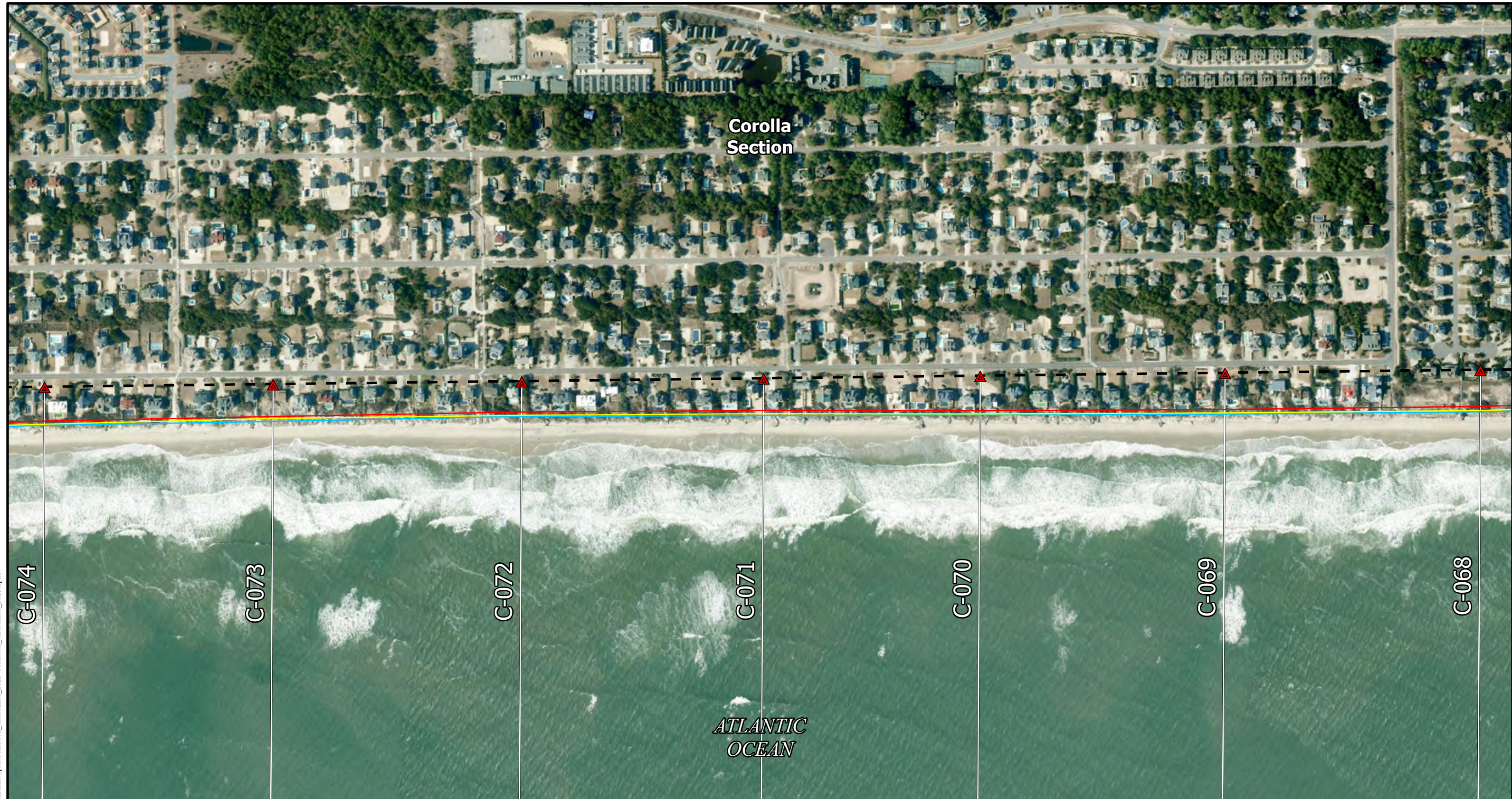


**TITLE**  
 Appendix B - Impact Line Maps for Three (3) Simulated Storms Along the Corolla and Pine Island Sections

COASTAL PROTECTION ENGINEERING OF NORTH CAROLINA, INC.  
 4038 Masonboro Loop Road  
 Wilmington, NC 28409  
 PH (910) 399-1905

Date: 5/18/2026 By: HT Page 2 of 12

Path: E:\Projects\USA\NC\Currituck\2020\2020\_Currituck\Asmt\aprx\Currituck\_Shorelines\_2025.aprx



**Corolla  
Section**

C-074

C-073

C-072

C-071

C-070

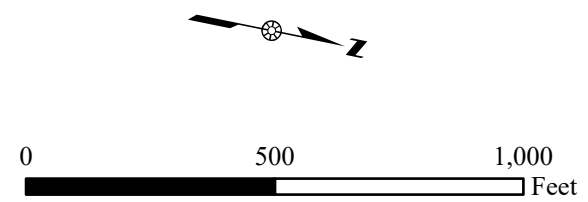
C-069

C-068

*ATLANTIC  
OCEAN*

**NOTES**  
 1) Aerial imagery collected between January and March 2024 by the NC Orthoimagery Program  
 2) Impact Lines represent the connected impact points developed through the XBEACH 1D storm simulations of each of the three storms based on 2025 conditions.

- LEGEND**
- Profile Stations
  - Beach Profile Transects
  - Section Area Boundary
  - Baseline
  - Hurricane Isabel 2025 Existing Conditions
  - Synthetic 25-Year Storm 2025 Existing Conditions
  - 2009 Nor'easter 2025 Existing Conditions



**TITLE**  
 Appendix B - Impact Line Maps for Three (3) Simulated Storms Along the Corolla and Pine Island Sections

COASTAL PROTECTION ENGINEERING OF NORTH CAROLINA, INC.  
 4038 Masonboro Loop Road  
 Wilmington, NC 28409  
 PH (910) 399-1905

Date: 5/18/2026 By: HT Page 3 of 12

Path: E:\Projects\USA\NC\Currituck\2020\2020\_CurBehA\sm\aprx\Currituck\_Shorelines\_2025.aprx

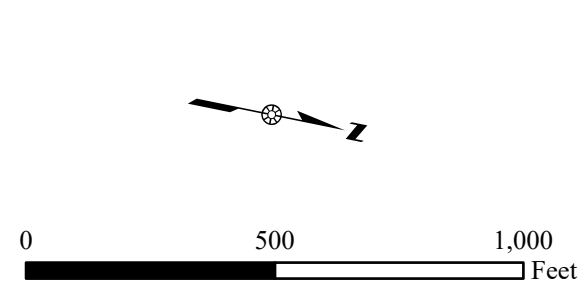


**NOTES**

- 1) Aerial imagery collected between January and March 2024 by the NC Orthoimagery Program
- 2) Impact Lines represent the connected impact points developed through the XBEACH 1D storm simulations of each of the three storms based on 2025 conditions.

**LEGEND**

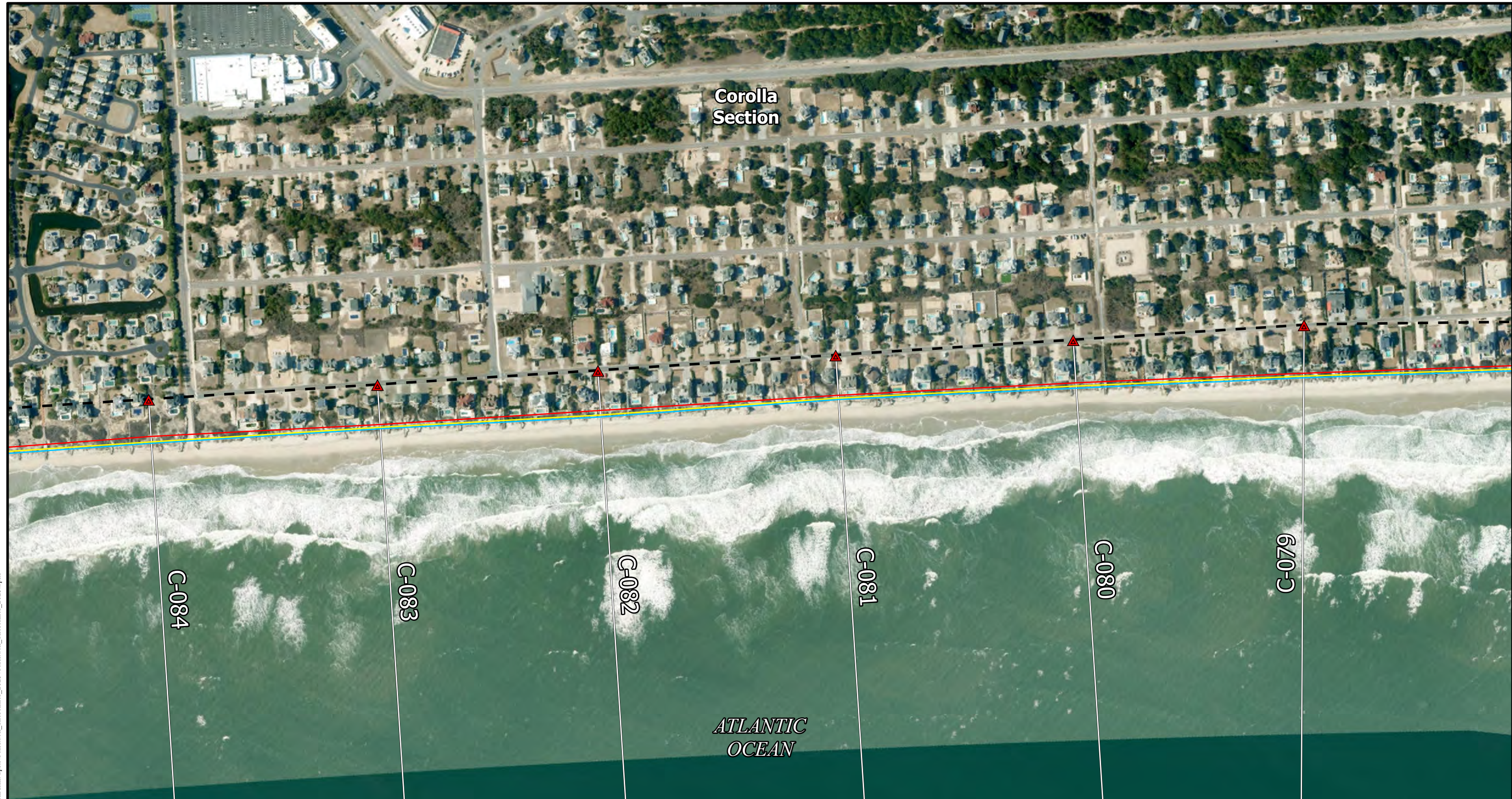
- Profile Stations
- Beach Profile Transects
- Section Area Boundary
- Baseline
- Hurricane Isabel 2025 Existing Conditions
- Synthetic 25-Year Storm 2025 Existing Conditions
- 2009 Nor'easter 2025 Existing Conditions



**TITLE**  
 Appendix B - Impact Line Maps for Three (3) Simulated Storms Along the Corolla and Pine Island Sections

COASTAL PROTECTION ENGINEERING OF NORTH CAROLINA, INC.  
 4038 Masonboro Loop Road  
 Wilmington, NC 28409  
 PH (910) 399-1905

Date: 5/18/2026 By: HT Page 4 of 12



**Corolla  
Section**

C-084

C-083

C-082

C-081

C-080

C-079

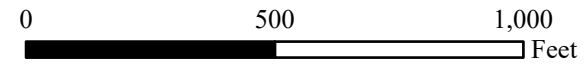
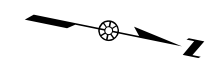
*ATLANTIC  
OCEAN*

**NOTES**

- 1) Aerial imagery collected between January and March 2024 by the NC Orthoimagery Program
- 2) Impact Lines represent the connected impact points developed through the XBEACH 1D storm simulations of each of the three storms based on 2025 conditions.

**LEGEND**

- Profile Stations
- Beach Profile Transects
- Section Area Boundary
- Baseline
- Hurricane Isabel 2025 Existing Conditions
- Synthetic 25-Year Storm 2025 Existing Conditions
- 2009 Nor'easter 2025 Existing Conditions

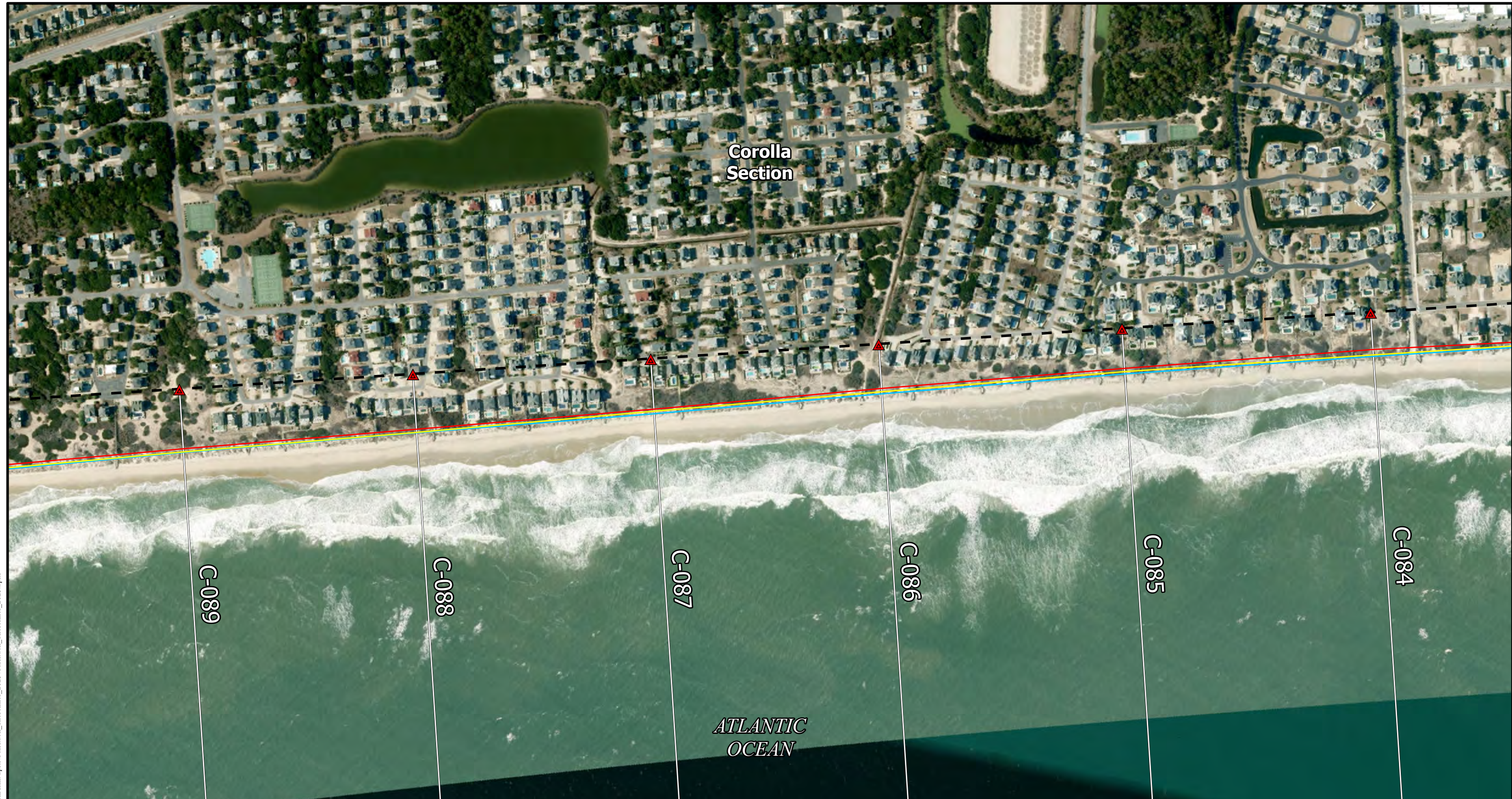


**TITLE**

**Appendix B - Impact Line Maps for  
Three (3) Simulated Storms Along the  
Corolla and Pine Island Sections**

**COASTAL PROTECTION ENGINEERING  
OF NORTH CAROLINA, INC.**  
4038 Masonboro Loop Road  
Wilmington, NC 28409  
PH (910) 399-1905

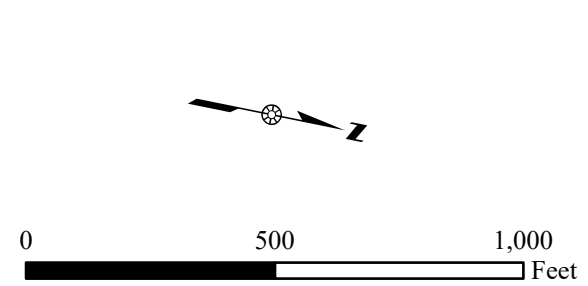
Path: E:\Projects\USA\NC\Currituck\2020\2020\_Currituck\A\sm\aprx\Currituck\_Shorelines\_2025.aprx



**NOTES**

- 1) Aerial imagery collected between January and March 2024 by the NC Orthoimagery Program
- 2) Impact Lines represent the connected impact points developed through the XBEACH 1D storm simulations of each of the three storms based on 2025 conditions.

- LEGEND**
- Profile Stations
  - Beach Profile Transects
  - Section Area Boundary
  - Baseline
  - Hurricane Isabel 2025 Existing Conditions
  - Synthetic 25-Year Storm 2025 Existing Conditions
  - 2009 Nor'easter 2025 Existing Conditions

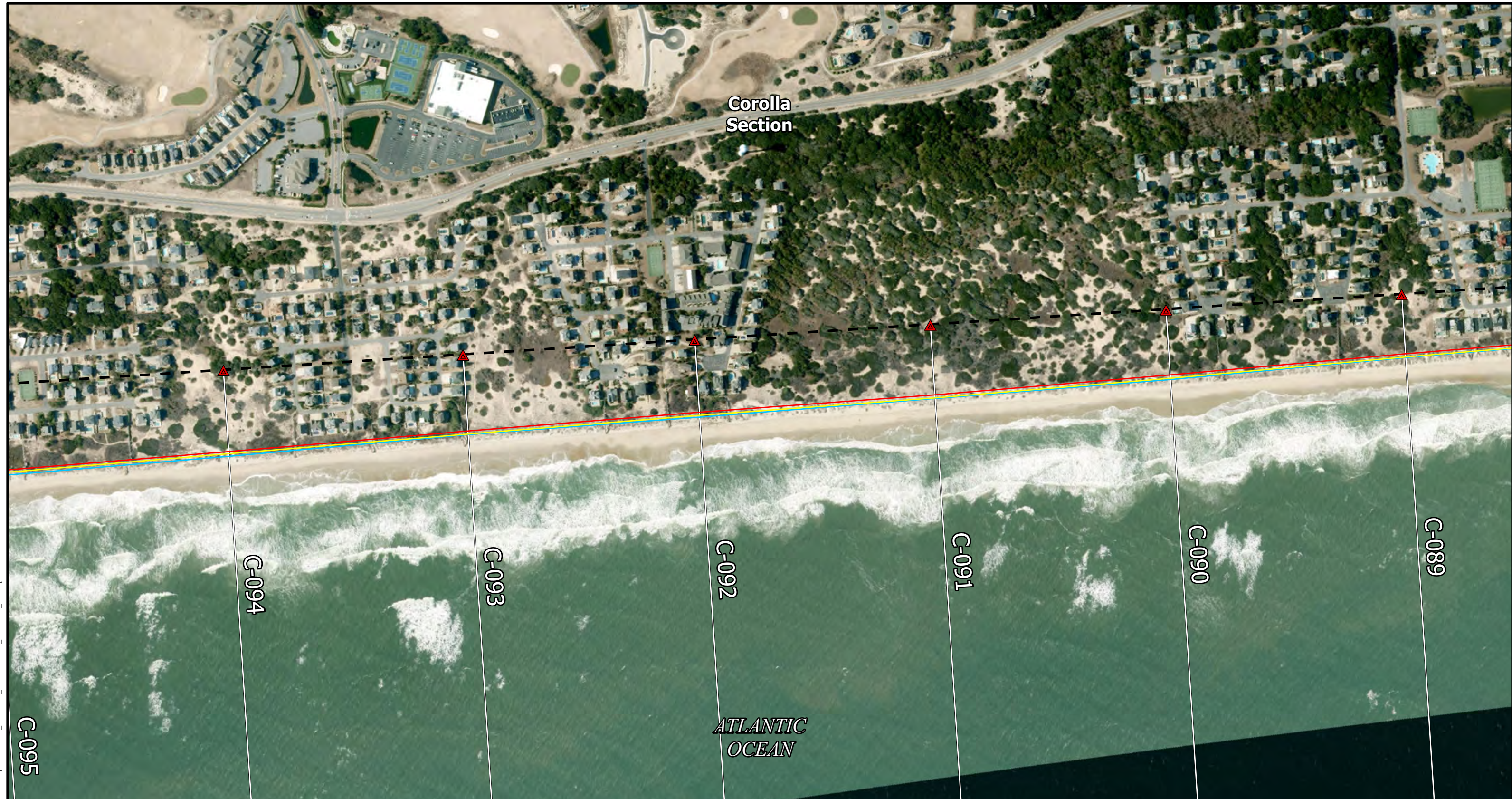


**TITLE**  
 Appendix B - Impact Line Maps for Three (3) Simulated Storms Along the Corolla and Pine Island Sections

COASTAL PROTECTION ENGINEERING OF NORTH CAROLINA, INC.  
 4038 Masonboro Loop Road  
 Wilmington, NC 28409  
 PH (910) 399-1905

Date: 5/18/2026 By: HT Page 6 of 12

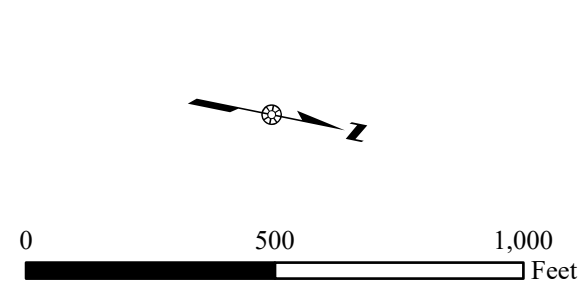
Path: E:\Projects\USA\NC\Currituck\2025\Currituck\Currituck\_Shorelines\_2025.aprx



**NOTES**

- 1) Aerial imagery collected between January and March 2024 by the NC Orthoimagery Program
- 2) Impact Lines represent the connected impact points developed through the XBEACH 1D storm simulations of each of the three storms based on 2025 conditions.

- LEGEND**
- Profile Stations
  - Beach Profile Transects
  - Section Area Boundary
  - Baseline
  - Hurricane Isabel 2025 Existing Conditions
  - Synthetic 25-Year Storm 2025 Existing Conditions
  - 2009 Nor'easter 2025 Existing Conditions

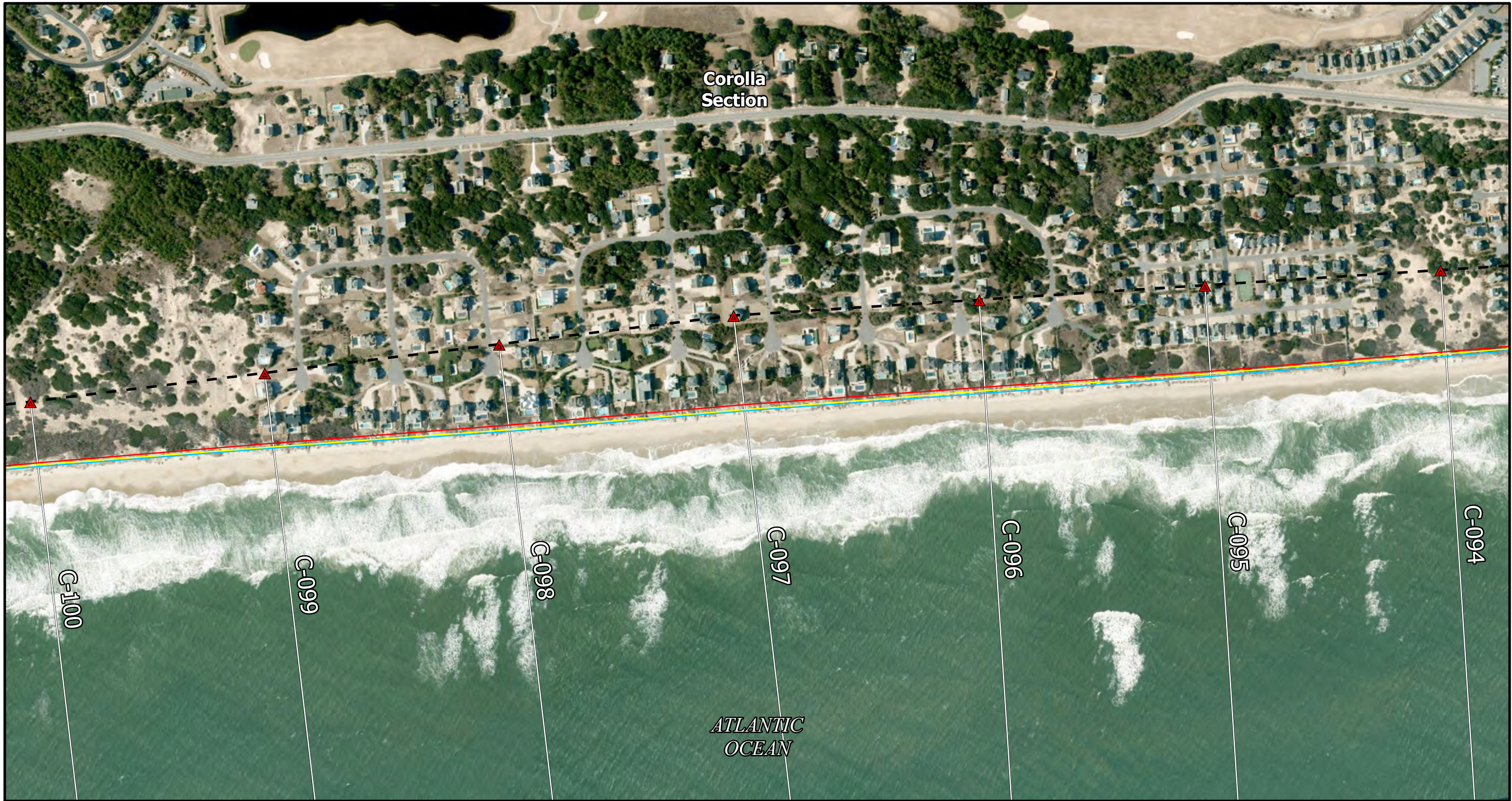


**TITLE**  
 Appendix B - Impact Line Maps for Three (3) Simulated Storms Along the Corolla and Pine Island Sections

COASTAL PROTECTION ENGINEERING OF NORTH CAROLINA, INC.  
 4038 Masonboro Loop Road  
 Wilmington, NC 28409  
 PH (910) 399-1905

Date: 5/18/2026 By: HT Page 7 of 12

Path: E:\Projects\USA\NC\Currituck\2020\Currituck\Currituck\_Shortlines\_2025.aprx



Corolla  
Section

ATLANTIC  
OCEAN

C-100

C-099

C-098

C-097

C-096

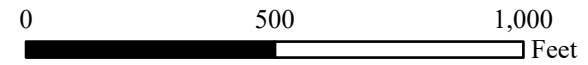
C-095

C-094

**NOTES**  
 1) Aerial imagery collected between January and March 2024 by the NC Orthoimagery Program  
 2) Impact Lines represent the connected impact points developed through the XBEACH 1D storm simulations of each of the three storms based on 2025 conditions.

**LEGEND**

- Profile Stations
- Beach Profile Transects
- Section Area Boundary
- Baseline
- Hurricane Isabel 2025 Existing Conditions
- Synthetic 25-Year Storm 2025 Existing Conditions
- 2009 Nor'easter 2025 Existing Conditions



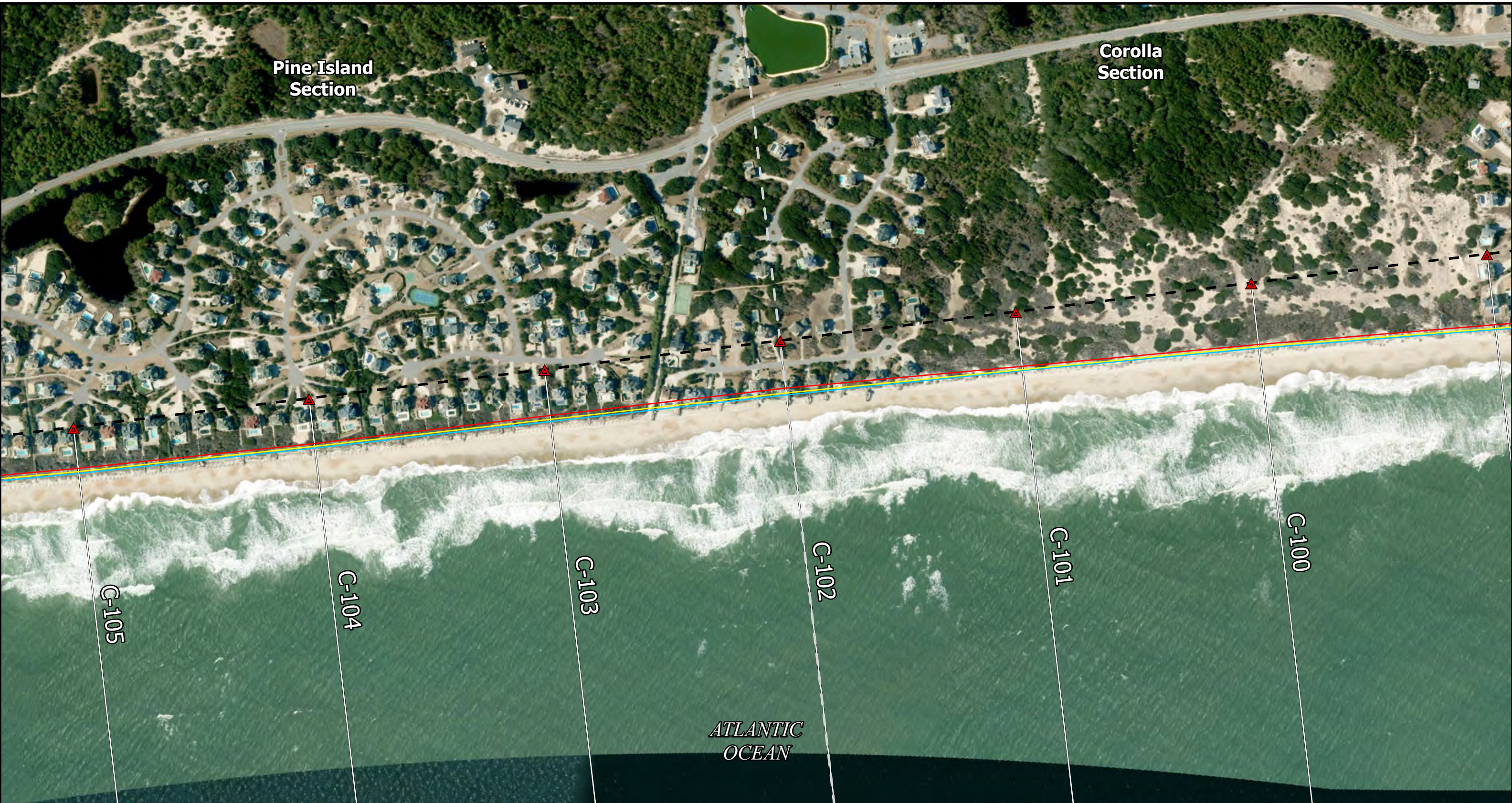
**TITLE**  
 Appendix B - Impact Line Maps for  
 Three (3) Simulated Storms Along the  
 Corolla and Pine Island Sections

COASTAL PROTECTION ENGINEERING  
 OF NORTH CAROLINA, INC.  
 4038 Masonboro Loop Road  
 Wilmington, NC 28409  
 PH (910) 399-1905

Path: E:\Projects\USA\NC\Currituck\2020\2020\Currituck\Currituck\Shorelines\_2025.aprx

Pine Island Section

Corolla Section

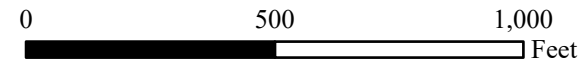
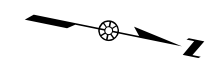


**NOTES**

- 1) Aerial imagery collected between January and March 2024 by the NC Orthoimagery Program
- 2) Impact Lines represent the connected impact points developed through the XBEACH 1D storm simulations of each of the three storms based on 2025 conditions.

**LEGEND**

- Profile Stations
- Beach Profile Transects
- Section Area Boundary
- Baseline
- Hurricane Isabel 2025 Existing Conditions
- Synthetic 25-Year Storm 2025 Existing Conditions
- 2009 Nor'easter 2025 Existing Conditions



**TITLE**

Appendix B - Impact Line Maps for Three (3) Simulated Storms Along the Corolla and Pine Island Sections

COASTAL PROTECTION ENGINEERING OF NORTH CAROLINA, INC.  
 4038 Masonboro Loop Road  
 Wilmington, NC 28409  
 PH (910) 399-1905

Path: E:\Projects\USA\NC\Currituck\2020\Currituck\Currituck\_Shorelines\_2025.aprx



**Pine Island Section**

C-110

C-109

C-108

C-107

C-106

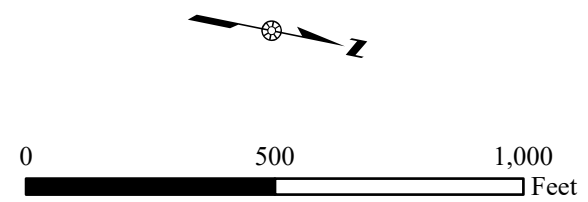
C-105

ATLANTIC OCEAN

**NOTES**  
 1) Aerial imagery collected between January and March 2024 by the NC Orthoimagery Program  
 2) Impact Lines represent the connected impact points developed through the XBEACH 1D storm simulations of each of the three storms based on 2025 conditions.

**LEGEND**

- Profile Stations
- Beach Profile Transects
- Section Area Boundary
- Baseline
- Hurricane Isabel 2025 Existing Conditions
- Synthetic 25-Year Storm 2025 Existing Conditions
- 2009 Nor'easter 2025 Existing Conditions



**TITLE**  
 Appendix B - Impact Line Maps for Three (3) Simulated Storms Along the Corolla and Pine Island Sections

COASTAL PROTECTION ENGINEERING OF NORTH CAROLINA, INC.  
 4038 Masonboro Loop Road  
 Wilmington, NC 28409  
 PH (910) 399-1905

Date: 5/18/2026 By: HT Page 10 of 12

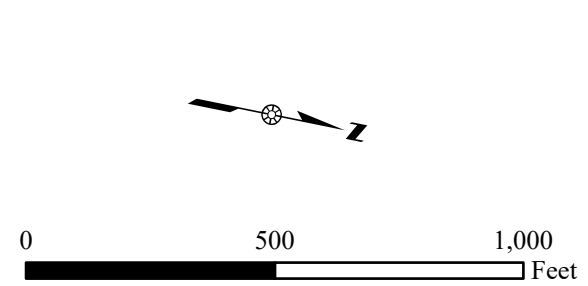
Path: E:\Projects\USA\NC\Currituck\2025\Currituck\_Shorelines\_2025.aprx



**NOTES**

- 1) Aerial imagery collected between January and March 2024 by the NC Orthoimagery Program
- 2) Impact Lines represent the connected impact points developed through the XBEACH 1D storm simulations of each of the three storms based on 2025 conditions.

- LEGEND**
- Profile Stations
  - Beach Profile Transects
  - Section Area Boundary
  - Baseline
  - Hurricane Isabel 2025 Existing Conditions
  - Synthetic 25-Year Storm 2025 Existing Conditions
  - 2009 Nor'easter 2025 Existing Conditions



**TITLE**  
 Appendix B - Impact Line Maps for Three (3) Simulated Storms Along the Corolla and Pine Island Sections

COASTAL PROTECTION ENGINEERING OF NORTH CAROLINA, INC.  
 4038 Masonboro Loop Road  
 Wilmington, NC 28409  
 PH (910) 399-1905

Date: 5/18/2026      By: HT      Page 11 of 12

Path: E:\Projects\USA\NC\Currituck\2025\Currituck\Currituck\_Shorelines\_2025.aprx

Dare County

Pine Island Section

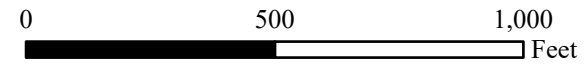
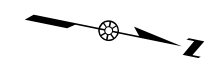


NOTES

- 1) Aerial imagery collected between January and March 2024 by the NC Orthoimagery Program
- 2) Impact Lines represent the connected impact points developed through the XBEACH 1D storm simulations of each of the three storms based on 2025 conditions.

LEGEND

- Profile Stations
- Beach Profile Transects
- Section Area Boundary
- Baseline
- Hurricane Isabel 2025 Existing Conditions
- Synthetic 25-Year Storm 2025 Existing Conditions
- 2009 Nor'easter 2025 Existing Conditions



TITLE

Appendix B - Impact Line Maps for Three (3) Simulated Storms Along the Corolla and Pine Island Sections

COASTAL PROTECTION ENGINEERING OF NORTH CAROLINA, INC.  
 4038 Masonboro Loop Road  
 Wilmington, NC 28409  
 PH (910) 399-1905

Path: E:\Projects\USA\NC\Currituck\2020\Currituck\Currituck\Currituck\_Shorelines\_2025.aprx