

Connect Currituck Pedestrian Master Plan

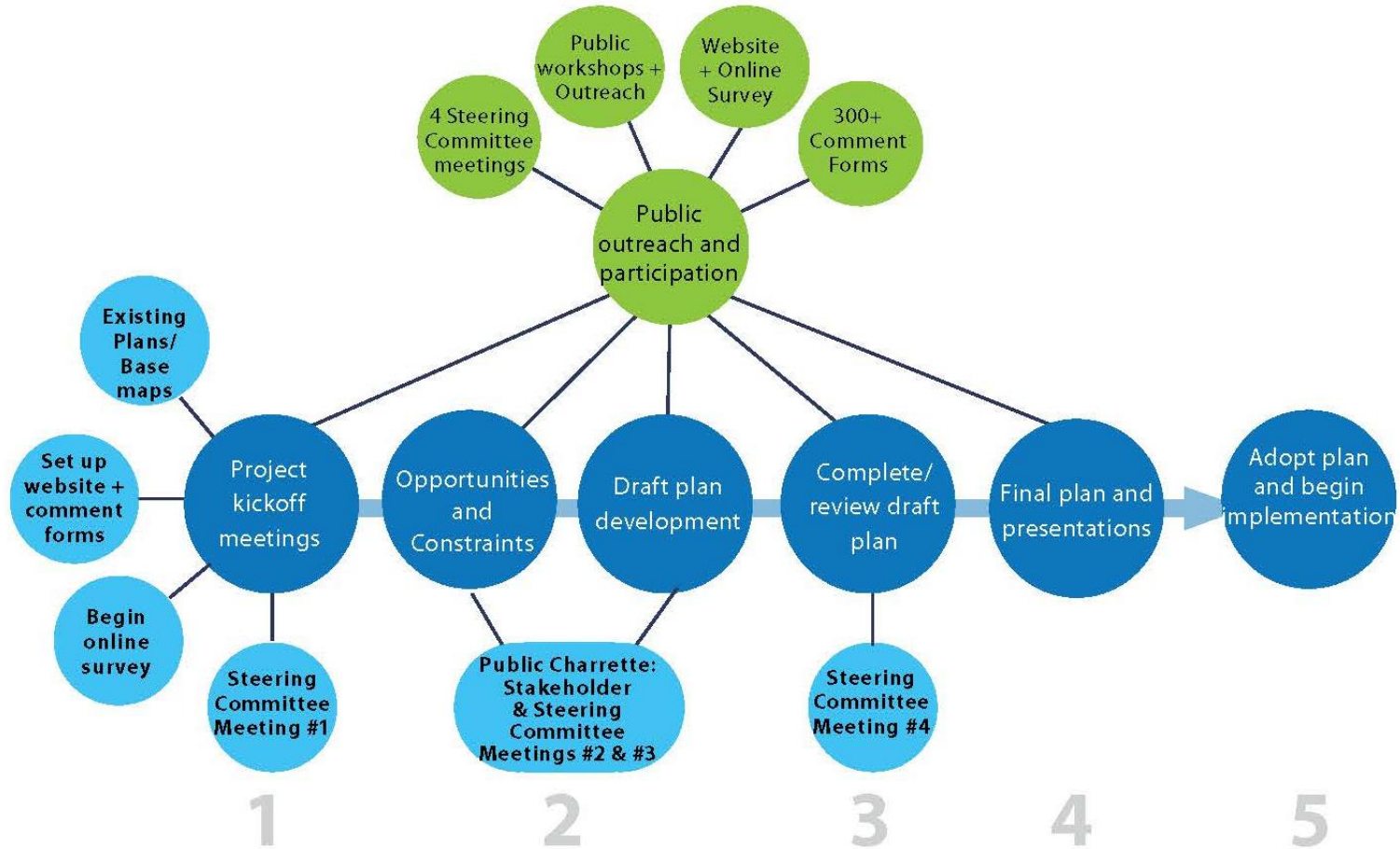


Connect Currituck Pedestrian Master Plan

Key Benefits



Connect Currituck Pedestrian Master Plan Planning Process



Connect Currituck Pedestrian Master Plan Public Outreach Summary



- Website: www.connectcurrituck.com
- User Survey (Online and Hardcopy)
- Steering Committee Outreach
- Public Charrette
- Outreach Events
 - Surveying at area grocery stores and community centers
 - Focus groups
 - Table at Corolla 5K run in June



Connect Currituck Pedestrian Master Plan Plan Outline



Chapter 1: Introduction

Chapter 2: Existing Conditions

Chapter 3: Programs

Chapter 4: Policy

Chapter 5: Recommendations

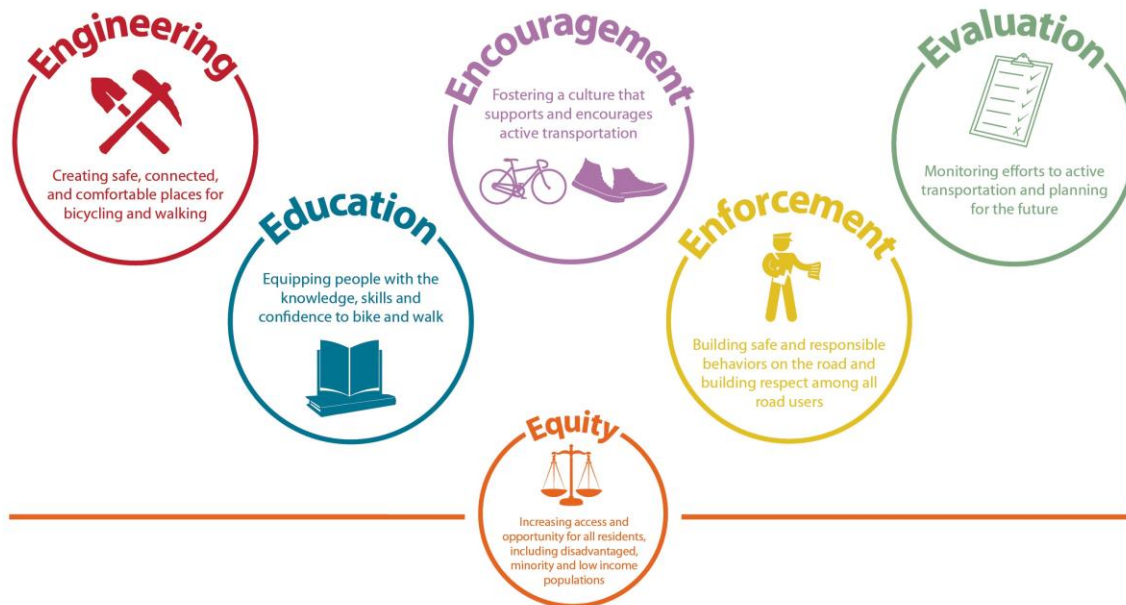
Chapter 6: Implementation

Connect Currituck Pedestrian Master Plan

Chapter 1: Introduction



“Currituck County is a destination where pedestrian connectivity and access is provided to people of all ages, abilities, and socioeconomic backgrounds and where walking is encouraged and supported to create a healthy, prosperous, and livable Currituck for residents and visitors alike.”

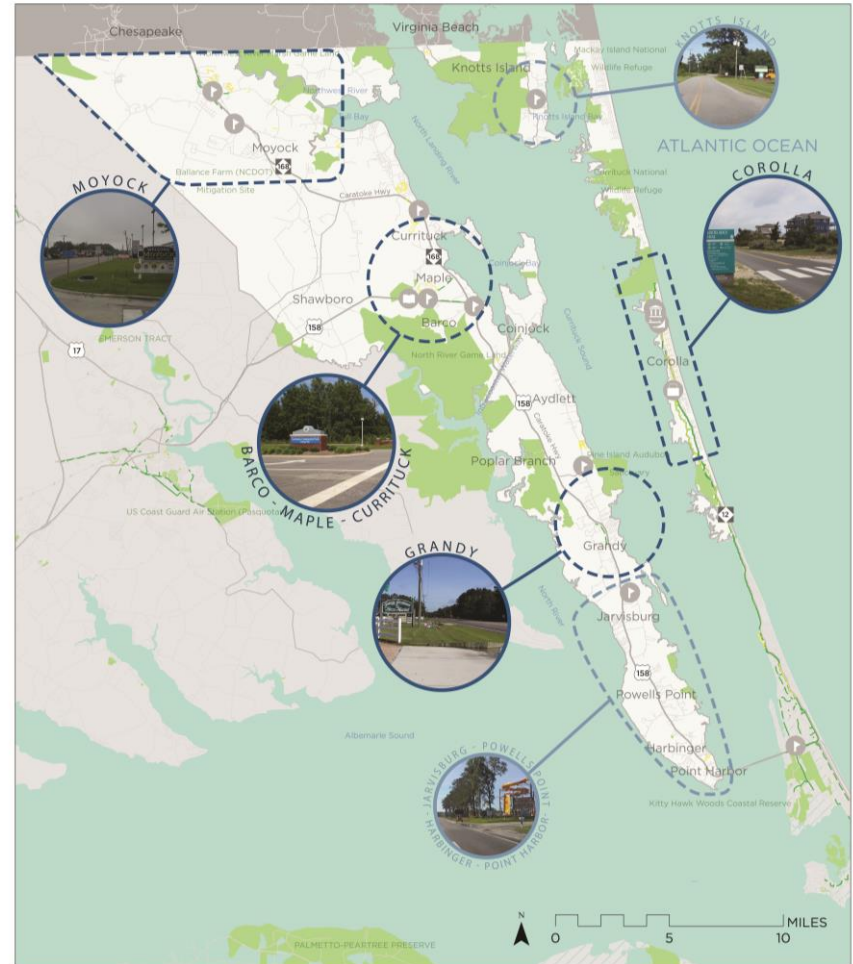


Connect Currituck Pedestrian Master Plan

Chapter 2: Existing Conditions



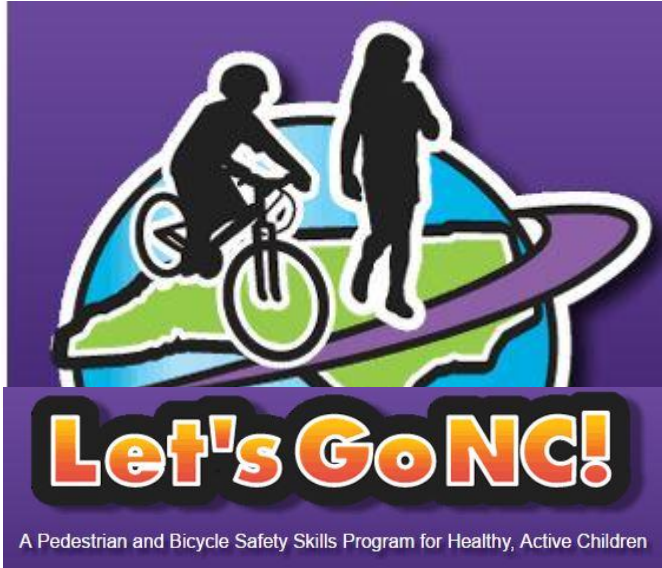
- Study Area
 - 235 Miles of Sidewalks
- Pedestrian Collisions
- Equity Analysis
- Live, Work, Play Analysis
- Programmed Projects (BOC Approved, MTIP)



CURRITUCK COUNTY PEDESTRIAN MASTER PLAN (2017)
PLANNING HUBS

Connect Currituck Pedestrian Master Plan

Chapter 3: Programs



Connect Currituck Pedestrian Master Plan

Chapter 4: Policy

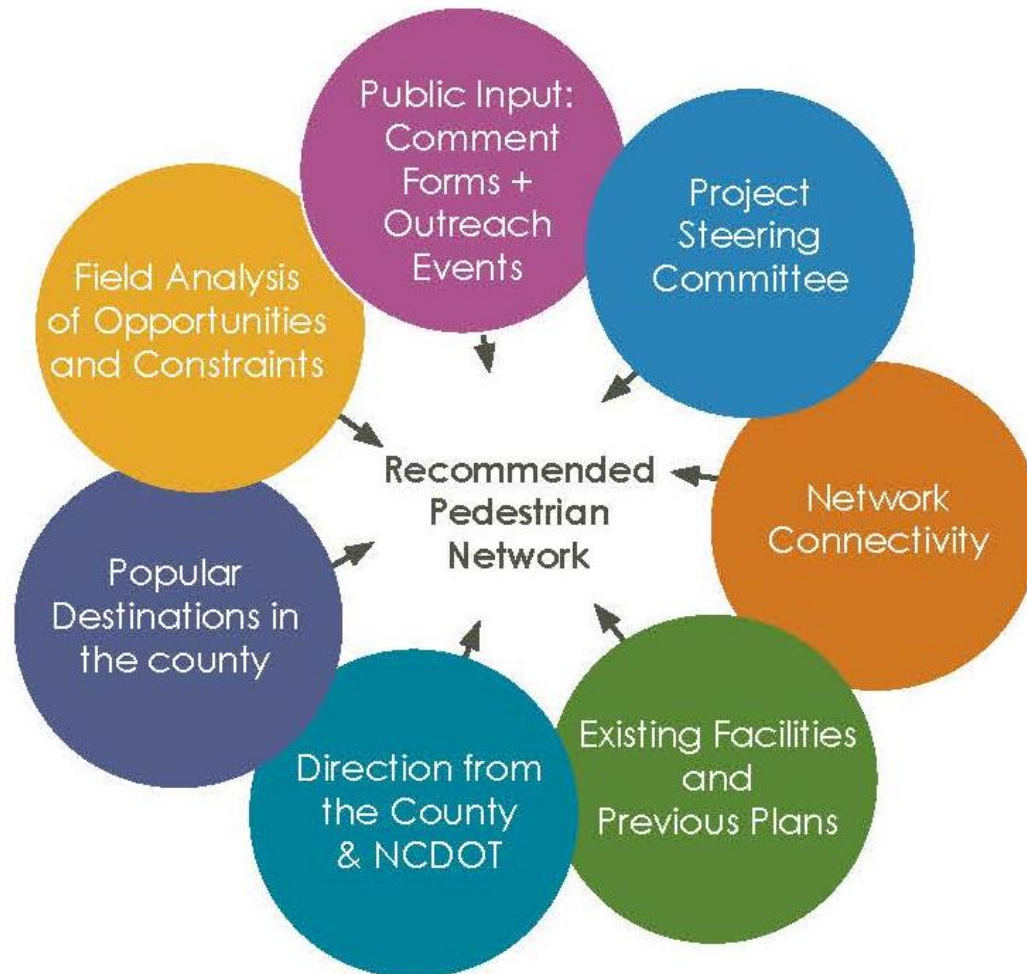


Reviewed Code of Ordinances, Development Ordinances, and guidance on Complete Streets & Vision Zero Policies

POLICY ACTION STEPS				
TASK	LEAD	SUPPORT	DETAILS	PHASE
Develop new policies & approaches for implementation.	Planning & Community Development	County Commission, Planning Commission, Public Works Department	Establish land right-of-way acquisition mechanisms, expand sidewalk fee in-lieu options, coordinate development plans, & implement driveway access management.	Short-term/ Ongoing (2018 onward)
Adopt a Complete Streets Policy.	Planning & Community Development	County Manager,	Partner across County departments to draft, adopt, and implement a comprehensive Complete Streets Policy with targeted performance measures and implementation steps.	Short-term/ Ongoing (2018 onward)
Be aware of the laws related to walking and bicycling in North Carolina, and help educate others.	Currituck County Sheriffs	NCDOT Bike/Ped Division, Planning & Community Development	Sheriff Department staff should be familiar with state bicycle and pedestrian policies and laws, including best practices for reporting on crashes involving people walking or bicycling: https://www.ncdot.gov/bikeped/lawspolicies/ Also, the National Highway Traffic Safety Administration has made available a 2-hour self-paced interactive video training for all law enforcement officers: http://www.nhtsa.gov/Driving+Safety/Bicycles/Enhancing+Bicycle+Safety:+Law+Enforcement+s+Role	Short-term (2018)
Update zoning and development ordinances to better support a walk friendly community.	Planning & Community Development	County Council, Planning Commission	See the recommended policies for the Currituck UDO in Chapter 4 on Policies.	Mid-term (2019)
Develop illustrated design standards for pedestrian friendly development and infrastructure.	Planning & Community Development	NCDOT	Using NCDOT standard details as guidance, develop new and update existing design standards relating to pedestrian access and infrastructure. Examples include curb ramp standard details, crosswalk marking standards, sidewalk standards, etc.	Mid-term (2019 onward)

Connect Currituck Pedestrian Master Plan

Chapter 5: Recommendations



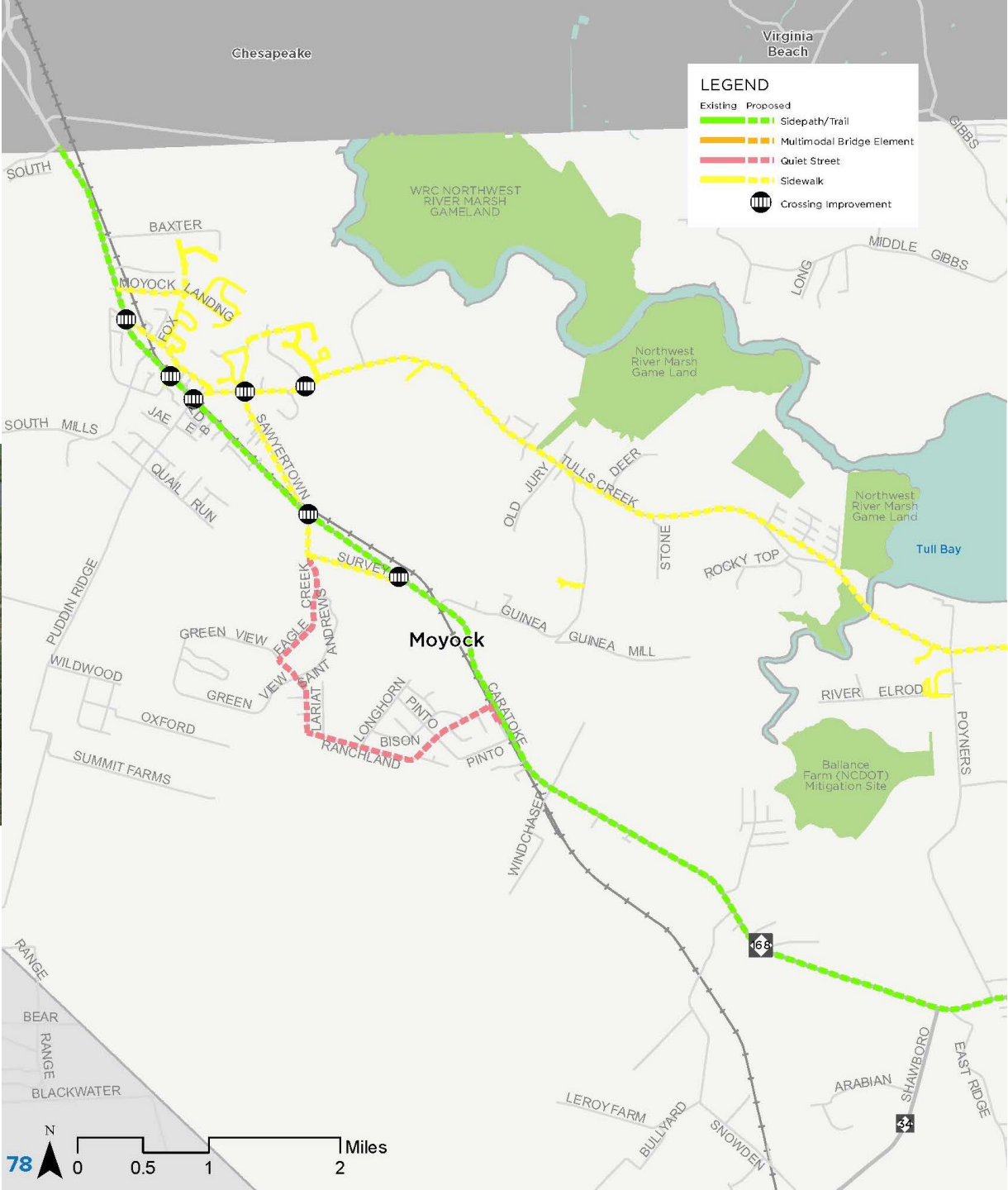
Connect Currituck Pedestrian Master Plan

Pedestrian Facilities

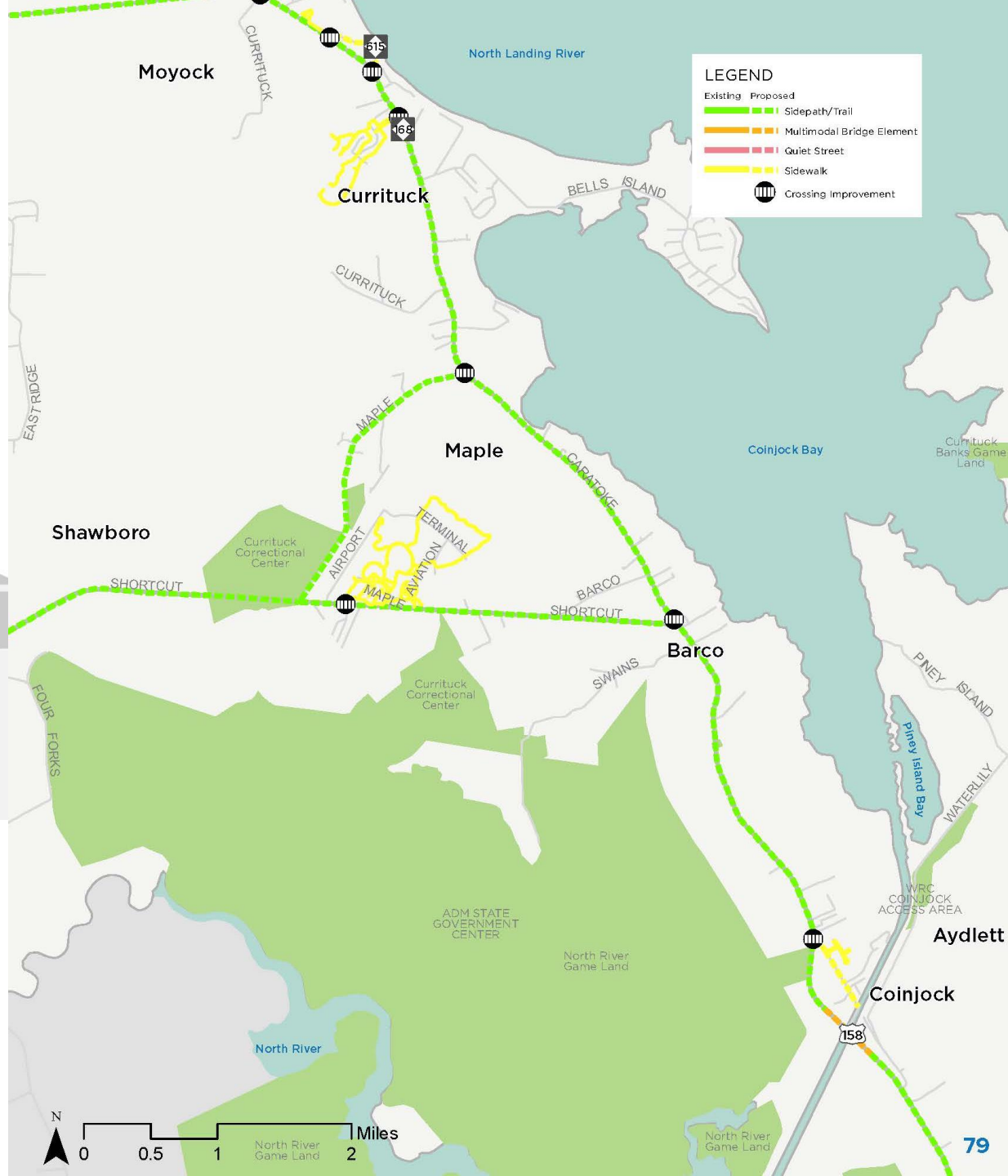


- New Sidewalks 16 projects, 20 miles
- New Sidepath/Trail 15 projects, 69 miles
- Quiet Streets 37 projects, 28 miles
- Multimodal Bridges 3 projects, 10 miles
- Crossing Improvements 38 projects

Moyock



Barco-Maple-Currituck



Grandy

Quiet street connections in neighborhoods and crossings to main shopping center



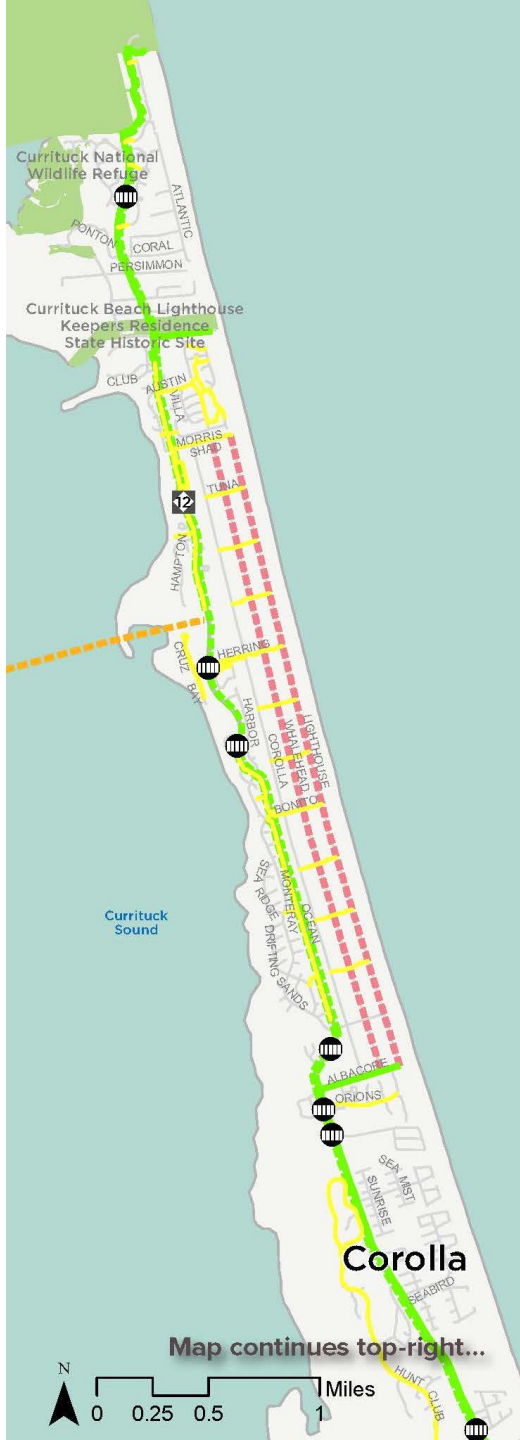
Jarvisburg- Powells Point

*Quiet street connections
create a Sound-to-Sound
walking loop*



Corolla

Completing the Corolla Trail greenway and creating quiet streets to improve safe pedestrian access to beaches and tourist destinations



Knotts Island

Quiet street traffic calming along the main corridor to improve safe pedestrian access throughout the community.

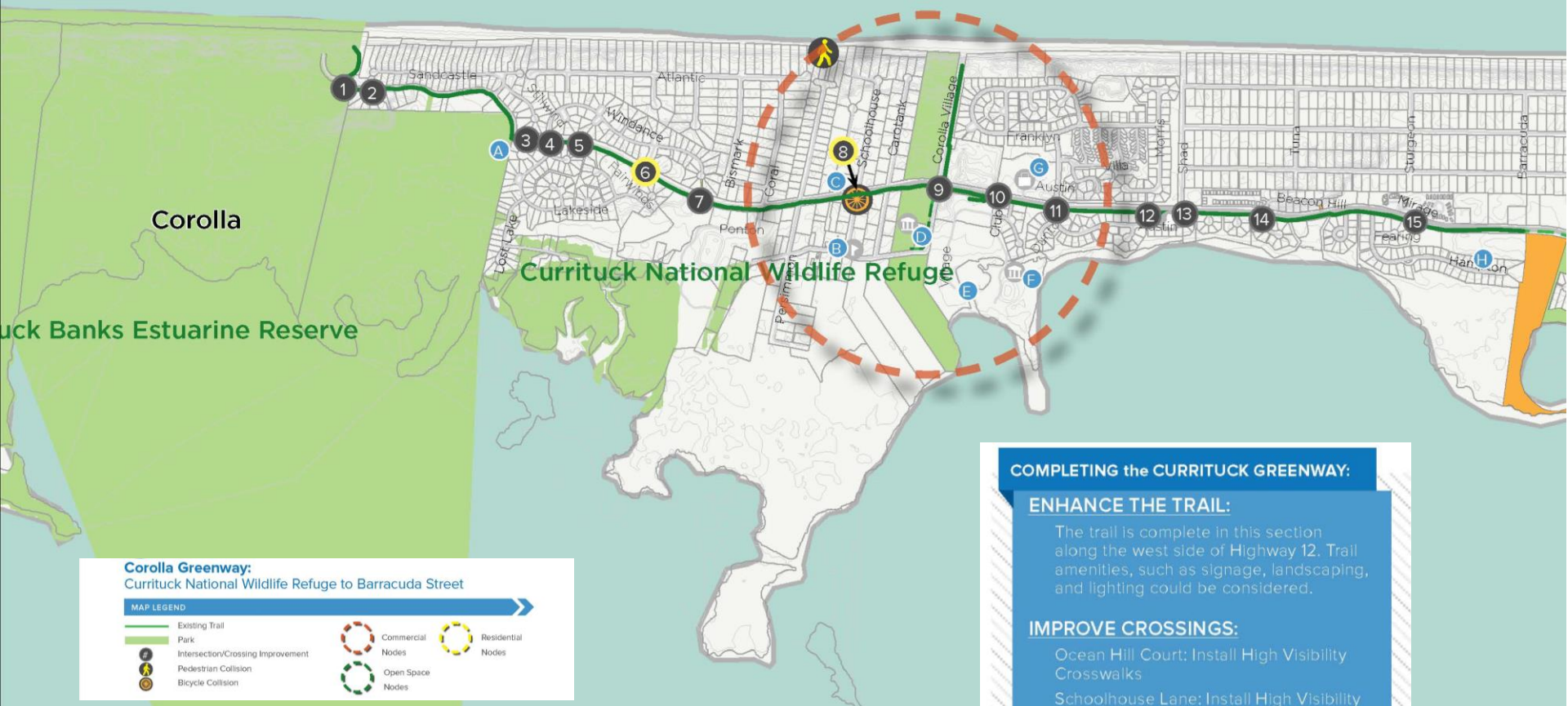


Corolla Priority Improvements



CURRITUCK
PEDESTRIAN MASTER PLAN

ATLANTIC OCEAN



Corolla

Currituck Banks Estuarine Reserve

Currituck National Wildlife Refuge

Corolla Greenway:
Currituck National Wildlife Refuge to Barracuda Street

MAP LEGEND

- Existing Trail
- Park
- Intersection/Crossing Improvement
- Pedestrian Collision
- Bicycle Collision
- Commercial Nodes
- Residential Nodes
- Open Space Nodes

COMPLETING the CURRITUCK GREENWAY:

ENHANCE THE TRAIL:

The trail is complete in this section along the west side of Highway 12. Trail amenities, such as signage, landscaping, and lighting could be considered.

IMPROVE CROSSINGS:

- Ocean Hill Court: Install High Visibility Crosswalks
- Schoolhouse Lane: Install High Visibility Crosswalks



Currituck National Wildlife Refuge



Corolla Priority Improvements

ATLANTIC OCEAN



COMPLETING the CURRITUCK GREENWAY:

IMPLEMENT TRAIL GAPS:

- Between the Grass Course miniature golf course and Ocean Forest Court to the south
- Between Towne Bank north of Monterey Drive, and Albacore Street to the south

IMPROVE CROSSINGS:

- Albacore St at Highway 12: Pedestrian signals + High Visibility Crosswalks
- Orions Way at Highway 12

RIGHT-OF-WAY CONSIDERATIONS:

The two proposed shared-use path sections on this page will have sufficient room within the road-right-of-way for construction. However the commercial area along the southern section is elevated from the roadway. The greenway would be better located in the elevated position along the commercial frontage than alongside the roadway, meaning easements must be made with these commercial land owners.

Corolla Greenway: Barracuda Street to Seabird Way

MAP LEGEND		KEY DESTINATIONS	
	Existing Trail		Commercial Nodes
	Trail Gap		Residential Nodes
	Park		Open Space Nodes
	Intersection/Crossing Improvement		Public Schools
	Pedestrian Collision		Public Library
	Bicycle Collision		Shopping
			Ace Hardware
			Monterey Plaza
			Corolla Adventure Golf
			Timbuck II Shopping Village

Currituck Sound



Corolla Priority Improvements



Corolla Greenway: Seabird Way to Pine Gate

MAP LEGEND

- Existing Trail
- Trail Gap
- Funded Trail Project
- Park
- Intersection/Crossing Improvement
- Pedestrian Collision
- Bicycle Collision

- Commercial Nodes
- Open Space Nodes
- Residential Nodes

KEY DESTINATIONS

- Public Schools
- Public Library
- Harris Teeter
- Currituck Golf Club
- ABC Store
- Just for the Beach Rentals
- Currituck County Southern Public Beach Access
- Cultural POI
- Shopping

COMPLETING the CURRITUCK GREENWAY:

IMPLEMENT TRAIL GAPS:

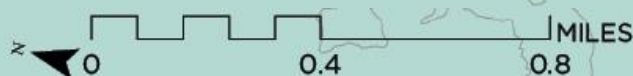
Between Yaupon Lane and Lindsey Lane on the east side of Highway 12

IMPROVE CROSSINGS:

Mid-block crossing of Highway 12, north of Harris Teeter: Install Pedestrian Refuge Island and High Visibility Crosswalks

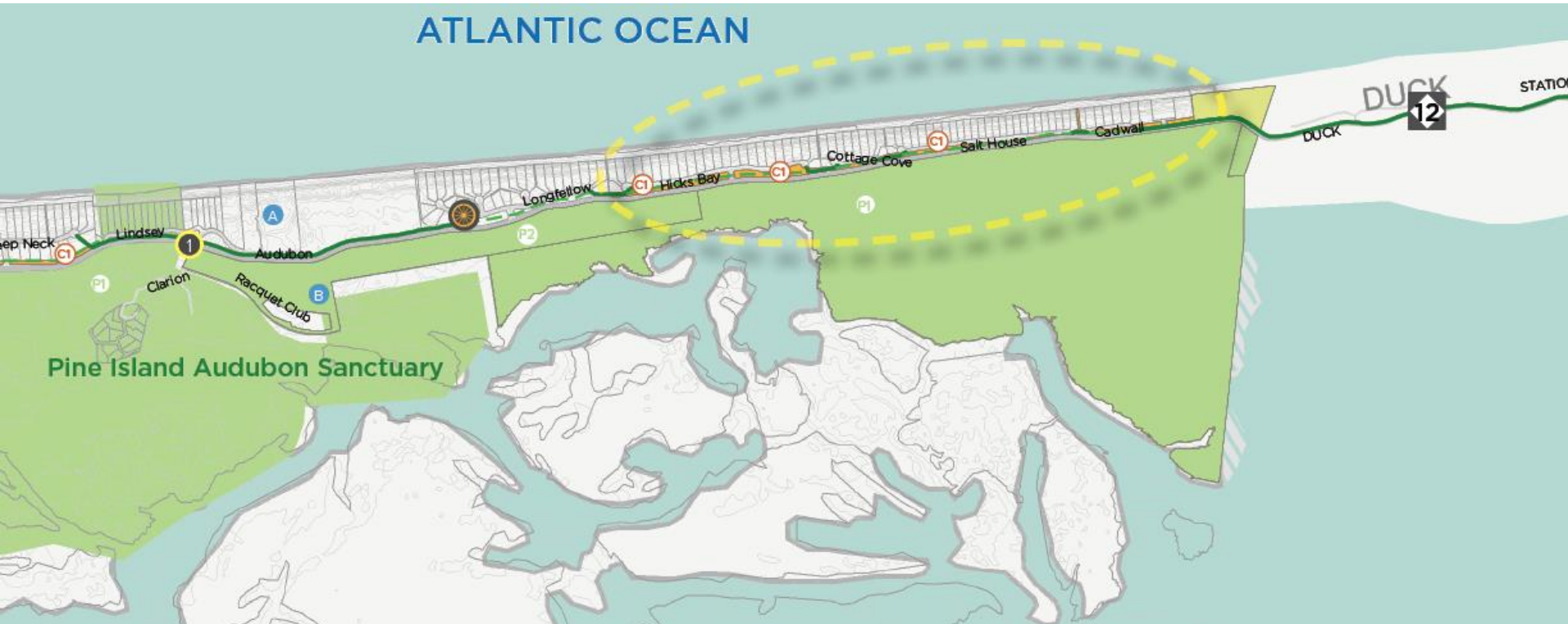
RIGHT-OF-WAY CONSIDERATIONS:

The segment of missing trail between Yaupon Lane and Lindsey Lane is primarily residential. Coordination with Pine Island PODA will be necessary to facilitate trail easements along the east side.



Currituck Sound

Corolla Priority Improvements



Corolla Greenway: Pine Gate to Duck

MAP LEGEND

- Existing Trail
- Trail Gap
- Park
- Intersection/Crossing Improvement
- Pedestrian Collision
- Bicycle Collision
- Commercial Nodes
- Open Space Nodes
- Residential Nodes

KEY DESTINATIONS

- Public Schools
- Public Library
- Cultural POI
- Shopping
- A Hampton Inn & Suites Outer Banks Corolla
- B Pine Island Racquet & Fitness Center

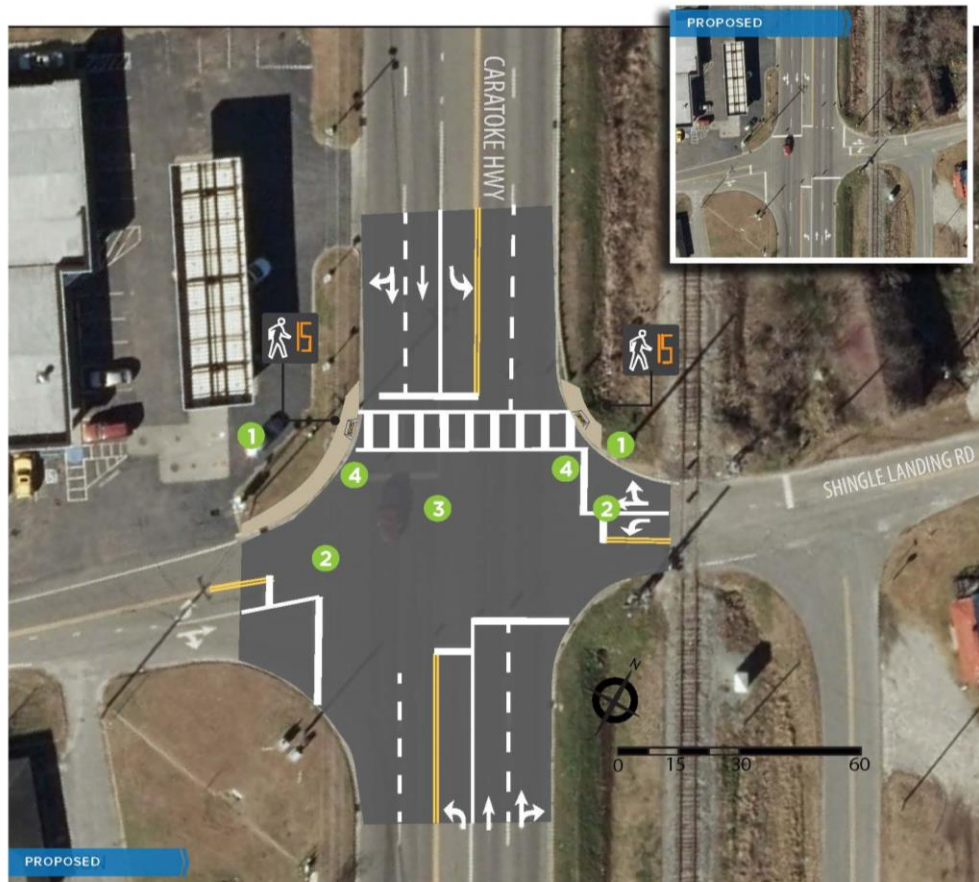
Currituck Sound



Moyock Priority Improvements



MOYOCK: INTERSECTION IMPROVEMENT at CARATOKE HIGHWAY (NC-168) & SHINGLE LANDING ROAD



This is not a design plan; precise locations and elements should be designed in accordance with engineering standards and NCDOT review.

Barco-Maple-Currituck Priority Improvements



BARCO/MAPLE/CURRITUCK: INTERSECTION IMPROVEMENT at SHORTCUT ROAD (US-158) & COLLEGE WAY



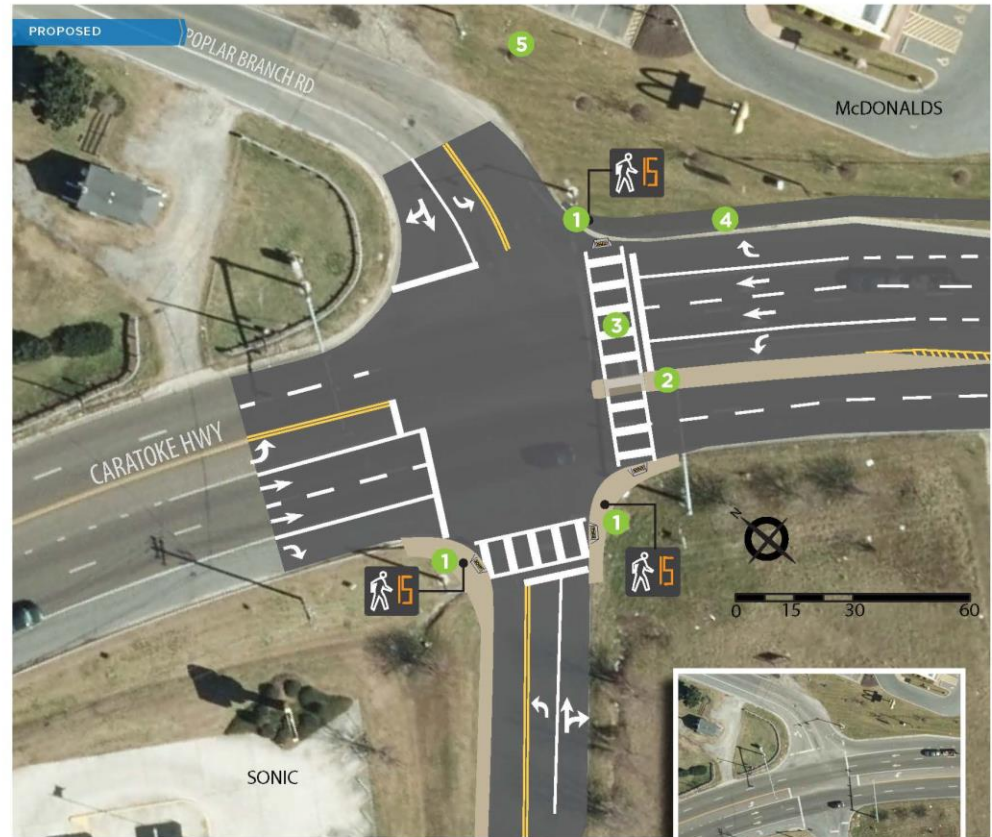
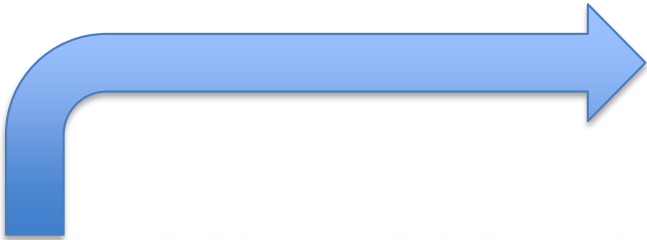
This is not a design plan; precise locations and elements should be designed in accordance with engineering standards and NCDOT review.



Grandy Priority Improvements



GRANDY: INTERSECTION IMPROVEMENTS at CARATOKE HIGHWAY (US-158) & POPLAR BRANCH ROAD



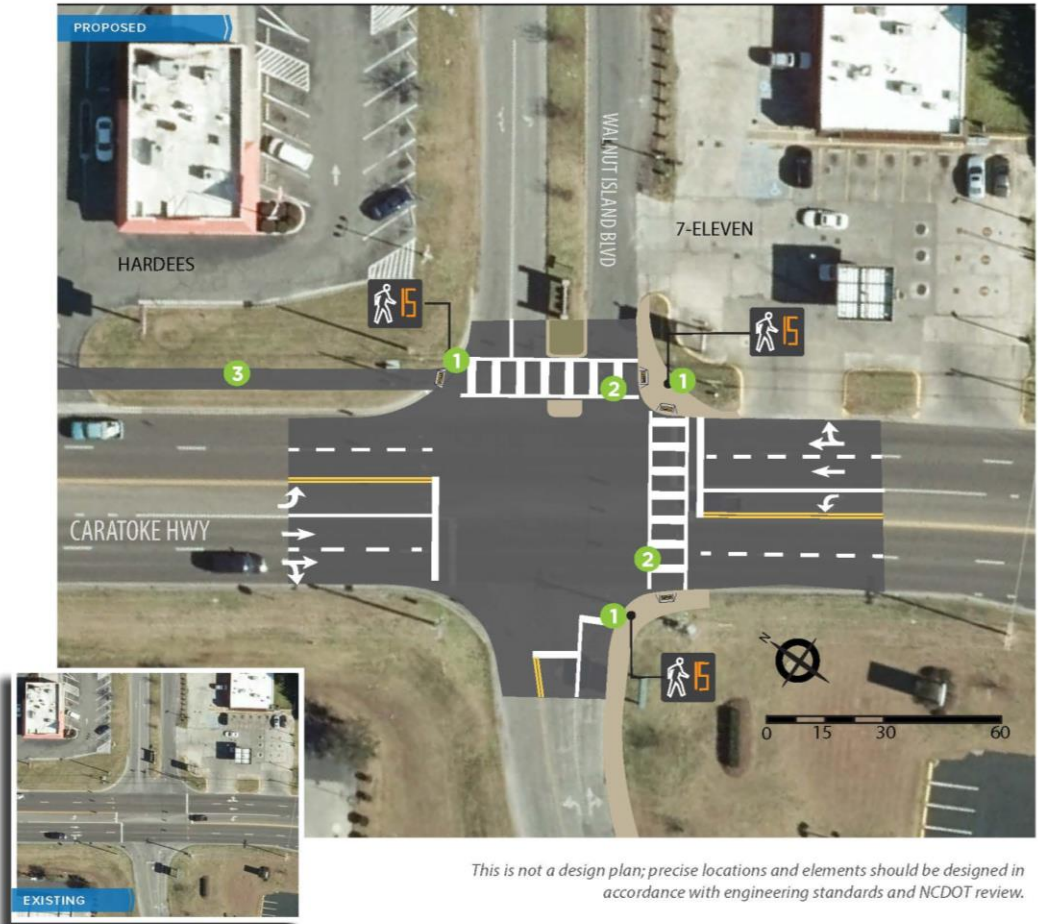
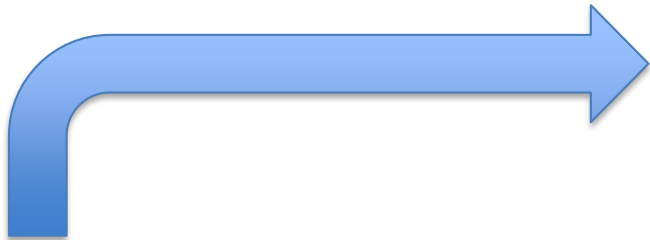
This is not a design plan; precise locations and elements should be designed in accordance with engineering standards and NCDOT review.



Grandy Priority Improvements



GRANDY: INTERSECTION IMPROVEMENTS at CARATOKE HIGHWAY (US-158) & WALNUT ISLAND BOULEVARD

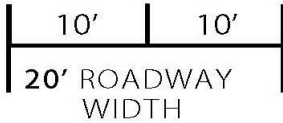


Grandy Priority Improvements

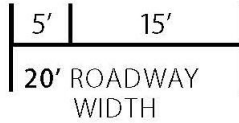
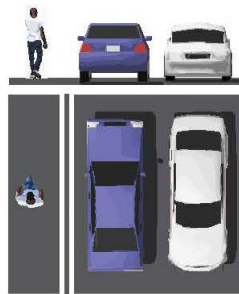


GRANDY: QUIET STREET- WALNUT ISLAND BOULEVARD

EXISTING



PROPOSED



This is not a design plan; precise locations and elements should be designed in accordance with engineering standards and NCDOT review.

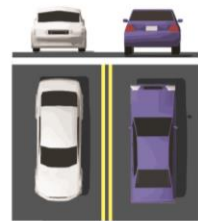
Corolla Priority Improvements



COROLLA: QUIET STREETS- LIGHTHOUSE DRIVE & WHALEHEAD DRIVE



12' | 12'
24' ROADWAY WIDTH



10' | 10'
20' ROADWAY WIDTH



6' | 6' | 12'
24' ROADWAY WIDTH



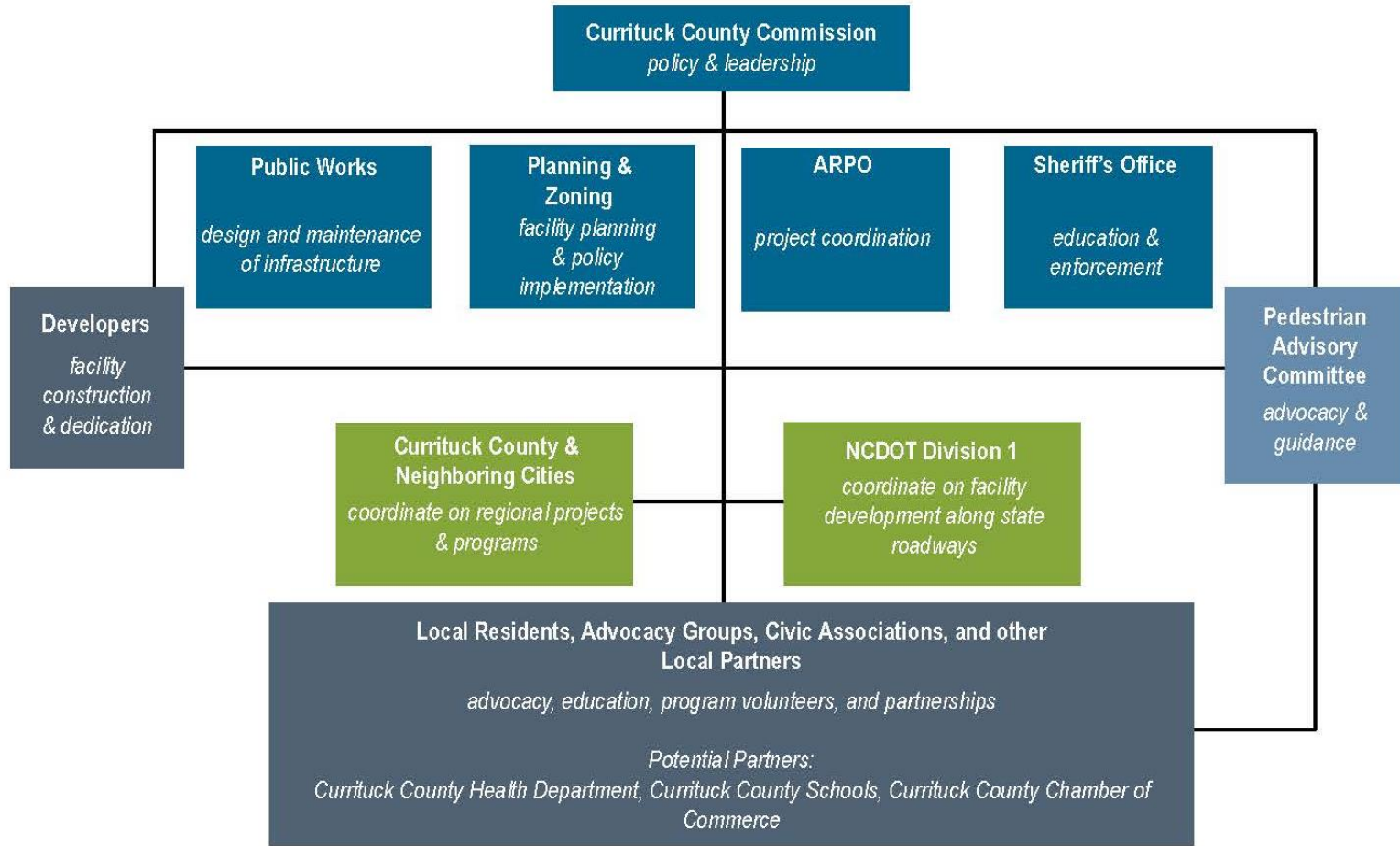
12' | 12'
24' ROADWAY WIDTH



This is not a design plan; precise locations and elements should be designed in accordance with engineering standards and NCDOT review.

Connect Currituck Pedestrian Master Plan

Chapter 6: Implementation



Connect Currituck Pedestrian Master Plan

