

**NOTES**

ALL PLANTS SHALL MEET MINIMUM STANDARDS OUTLINED IN THE AMERICAN STANDARDS FOR NURSERY STOCK, (LATEST EDITION) PUBLISHED BY THE AMERICAN ASSOCIATION OF NURSEYMEN, INC.

PLANTS SHALL BE SOUND, HEALTHY AND VIGOROUS, BE WELL BRANCHED AND DENSELY FOLIATED WHEN IN LEAF. PLANTS SHALL BE FREE OF DISEASE, PESTS, EGGS/LARVAE AND THEY SHALL BE FREE OF DAMAGE, DAMAGE INCLUDES, BUT IS NOT LIMITED TO SCRAPES ON THE BARK OR EVIDENCE OF GIRDLING FROM WIRE OR OTHER STANDING/SHEDDING MATERIAL.

CONTAINER PLANTS SHALL BE FREE OF SEVERE ROOT BOUND CONDITIONS. CONTRACTOR TO LIGHTLY SCRAPE/LOOSEN OUTER ROOTS AT TIME OF PLANTING.

ALL PLANTS SHALL BE PURCHASED FROM BONA-FIDE WHOLESALE NURSERIES AND/OR GROWERS.

PLANTS SHALL BE COVERED BY TARP OR WITHIN ENCLOSED TRUCK DURING TRANSPORT TO SITE.

SUBSTITUTIONS SHALL BE APPROVED BY THE OWNER OR THEIR DESIGNATED REPRESENTATIVE.

DESIGNATED MULCH AREAS TO BE MULCHED WITH A 4" DEPTH OF CLEAN, UN-DYED, TRIPLE SHREDDED HARDWOOD MULCH.

PLANT QUANTITIES SHOWN IN PLANTING LIST IS FOR CONTRACTOR COMMENCEMENT ONLY. IT IS THE CONTRACTORS RESPONSIBILITY TO OBTAIN QUANTITIES BASED ON PLANTS SHOWN ON THE DRAWINGS.

ANY EXISTING TREES AND PHYSICAL IMPROVEMENTS ARE SHOWN FOR REFERENCE ONLY. ADDITIONAL TREES/IMPROVEMENTS NOT SHOWN MAY EXIST ON SITE.

ALL PLANTS TO RECEIVE A SOIL ADDITIVE AT TIME OF PLANTING. SOIL ADDITIVE SHALL CONSIST OF ONE PART TOPSOIL TO ONE PART SAND. BOTH SAND AND TOPSOIL SHALL BE FREE OF ROOT, ROCKS OR OTHER MATERIAL AND SHALL BE THOROUGHLY MIXED PRIOR TO PLANTING.

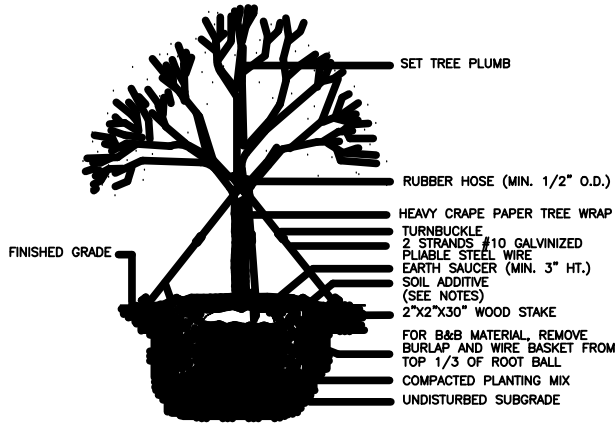
ALL PLANTS TO BE LIGHTLY TAMPED AFTER PLANTING TO ELIMINATE AIR POCKETS AND TO FIRMLY STABILIZE PLANTING.

ALL MULCHED LANDSCAPE BEDS TO BE BORDERED BY A TRENCHED EDGE.

ALL LANDSCAPED BEDS TO RECEIVE A 1 FOOT DEPTH OF CLEAN SAND PRIOR TO PLANTING.

CONTRACTOR TO WARRANTY PLANTS FOR ONE YEAR.

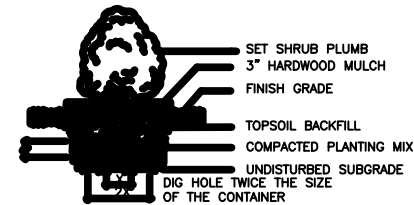
CONTRACTOR TO LOCATE ALL UTILITY SERVICE LINES (INCLUDING WATER) THAT SERVICE BUILDINGS PRIOR TO DEMOLITION/PLANTING.



**TREE PLANTING AND GUYING DETAIL**  
NOT TO SCALE

**INDEX OF DRAWINGS**

- CBP 1 COUNTY LINE**
- CBP 2 SOUTH BEACH ACCESS**
- CBP 3 BUCK ISLAND**
- CBP 4 MONTEREY PLAZA  
(EXCLUDED FROM BID)**
- CBP 5 MONTERAY PARK**
- CBP 6 CROWN POINT**
- CBP 7 COUNTY OFFICE**



**SHRUB PLANTING DETAIL**  
NOT TO SCALE

**ISSUED FOR BID**

**Corolla Beautification Project**  
Currituck County, North Carolina

October 1, 2017

**LAUGHING GULL DESIGN STUDIO**  
LANDSCAPE ARCHITECTURE • LANDPLANNING • ENVIRONMENTAL CONSULTING  
KITTY HAWK, NORTH CAROLINA 27949  
PHONE (252) 261-8747

Greenspace Landscape Planning & Design  
Nags Head, NC 27959  
252-673-9346



Know what's below.  
Call before you dig.



LEGEND AND PLANT LIST					
QTY.	COMMON NAME	BOTANICAL NAME	SIZE/COND.	SPACING	REMARKS
15	Virginia Red Cedar	Juniperus virginiana	15 Gal. 6-7' Ht.	As Shown	Full/Dense
8	Sea Green Juniper	Juniperus spp.	3 Gal. Cont.	4' O.C.	Full/Well Branched
18	Pink Muhly Grass	Muhlenbergia capilaris	3 Gal. Cont.	3' O.C.	Full/Well Branched
18	Red Blanketflower	Gaillardia 'Mesa Red'	1 Gal. Cont.	2' O.C.	Staggered Rows

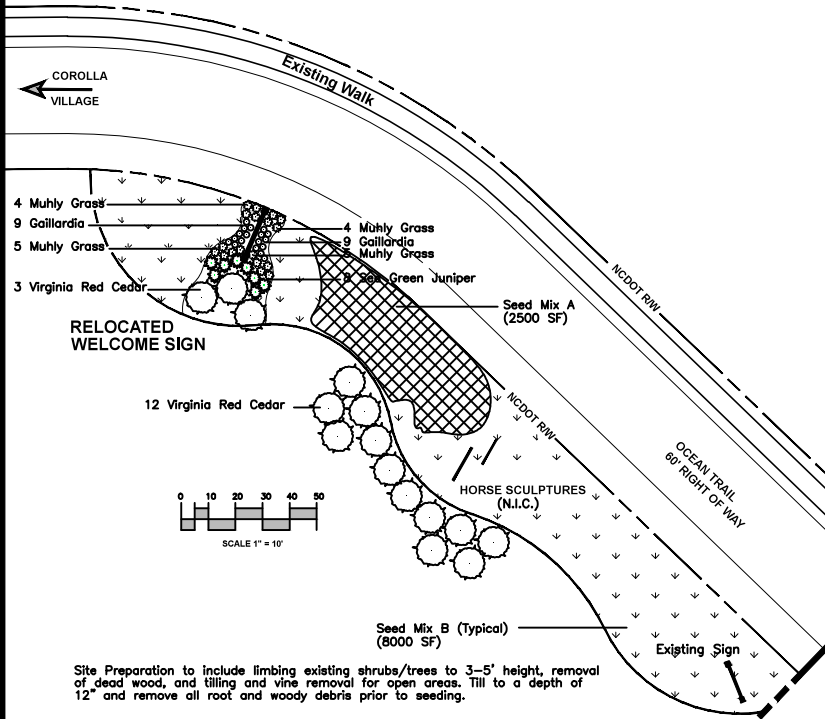
Seed Mix A		
8 ounces	Coreopsis	Coreopsis lanceolata
8 ounces	Gaillardia pulchella	Indian Blanket
8 ounces	Purple coneflower	Purple coneflower

Seed Mix B (Typical)		
8 ounces	Black eyed susan	Rudbeckia hirta
8 ounces	Goldenrod	Solidago sempervirens
8 ounces	Milkweed	Asclepias tuberosa
	White Yarrow	Achillea millefolium

Seed Mix B areas to receive 2,000 American Beach Grass plugs spaced at 3' on center.

**NOTES**

- ALL PLANTS SHALL MEET MINIMUM STANDARDS OUTLINED IN THE AMERICAN STANDARDS FOR NURSERY STOCK, (LATEST EDITION) PUBLISHED BY THE AMERICAN ASSOCIATION OF NURSERMEN, INC.
- PLANTS SHALL BE SOUND, HEALTHY AND WOODRUS, BE WELL BRANCHED AND DENSELY FOLIATED WHEN IN LEAF. PLANTS SHALL BE FREE OF DISEASE, PESTS, EGGS/LARVAE AND THEY SHALL BE FREE OF DAMAGE. DAMAGE INCLUDES, BUT IS NOT LIMITED TO SCRAPES ON THE BARK OR EVIDENCE OF GRUBBING FROM WORMS OR OTHER STAKING/BINDING MATERIAL.
- CONTAINER PLANTS SHALL BE FREE OF SEVERE ROOT BOUND CONDITIONS. CONTRACTOR TO LIGHTLY SCRAPE/LOOSEN OUTER ROOTS AT TIME OF PLANTING.
- ALL PLANTS SHALL BE PURCHASED FROM BONA-FIDE WHOLESALE NURSERIES AND/OR GROWERS.
- PLANTS SHALL BE COVERED BY TARP OR WITHIN ENCLOSED TRUCK DURING TRANSPORT TO SITE.
- SUBSTITUTIONS SHALL BE APPROVED BY THE OWNER OR THEIR DESIGNATED REPRESENTATIVE.
- DESIGNATED MULCH AREAS TO BE MULCHED WITH A 4" DEPTH OF CLEAN, UN-DYED, TRIPLE SHREDDED HARDWOOD MULCH.
- PLANT QUANTITIES SHOWN IN PLANTING LIST IS FOR CONTRACTOR CONFORMANCE ONLY. IT IS THE CONTRACTORS RESPONSIBILITY TO OBTAIN QUANTITIES BASED ON PLANTS SHOWN ON THE DRAWING.
- ANY EXISTING TREES AND PHYSICAL IMPROVEMENTS ARE SHOWN FOR REFERENCE ONLY. ADDITIONAL TREES/IMPROVEMENTS NOT SHOWN MAY EXIST ON SITE.
- ALL PLANTS TO RECEIVE A SOIL ADDITIVE AT TIME OF PLANTING. SOIL ADDITIVE SHALL CONSIST OF ONE PART TOPSOIL TO ONE PART SAND. BOTH SAND AND TOPSOIL SHALL BE FREE OF ROCKS OR OTHER MATERIAL AND SHALL BE THOROUGHLY MIXED PRIOR TO PLANTING.
- ALL PLANTS TO BE LIGHTLY DAMPED AFTER PLANTING TO ELIMINATE AIR POCKETS AND TO FIRMLY STABILIZE PLANTING.
- ALL MULCHED LANDSCAPE BEDS TO BE BORDERED BY A TRENCHED EDGE.
- ALL LANDSCAPED BEDS TO RECEIVE A 1 FOOT DEPTH OF CLEAN SAND PRIOR TO PLANTING.
- CONTRACTOR TO WARRANTY PLANTS FOR ONE YEAR.
- CONTRACTOR TO LOCATE ALL UTILITY SERVICE LINES (INCLUDING WATER) THAT SERVICE BUILDINGS PRIOR TO DEMOLITION/PLANTING.



**County Line**

CURRITUCK COUNTY  
DARE COUNTY

**ISSUED FOR BID**

**Corolla Beautification Project**  
Currituck County, North Carolina

October 1, 2017

DWG CBP 1

Designed by:

**LAUGHING GULL DESIGN STUDIO**  
LANDSCAPE ARCHITECTURE • LAND PLANNING • ENVIRONMENTAL CONSULTING  
KITTY HAWK, NORTH CAROLINA 27949  
PHONE (252) 261-8747

Greenspace

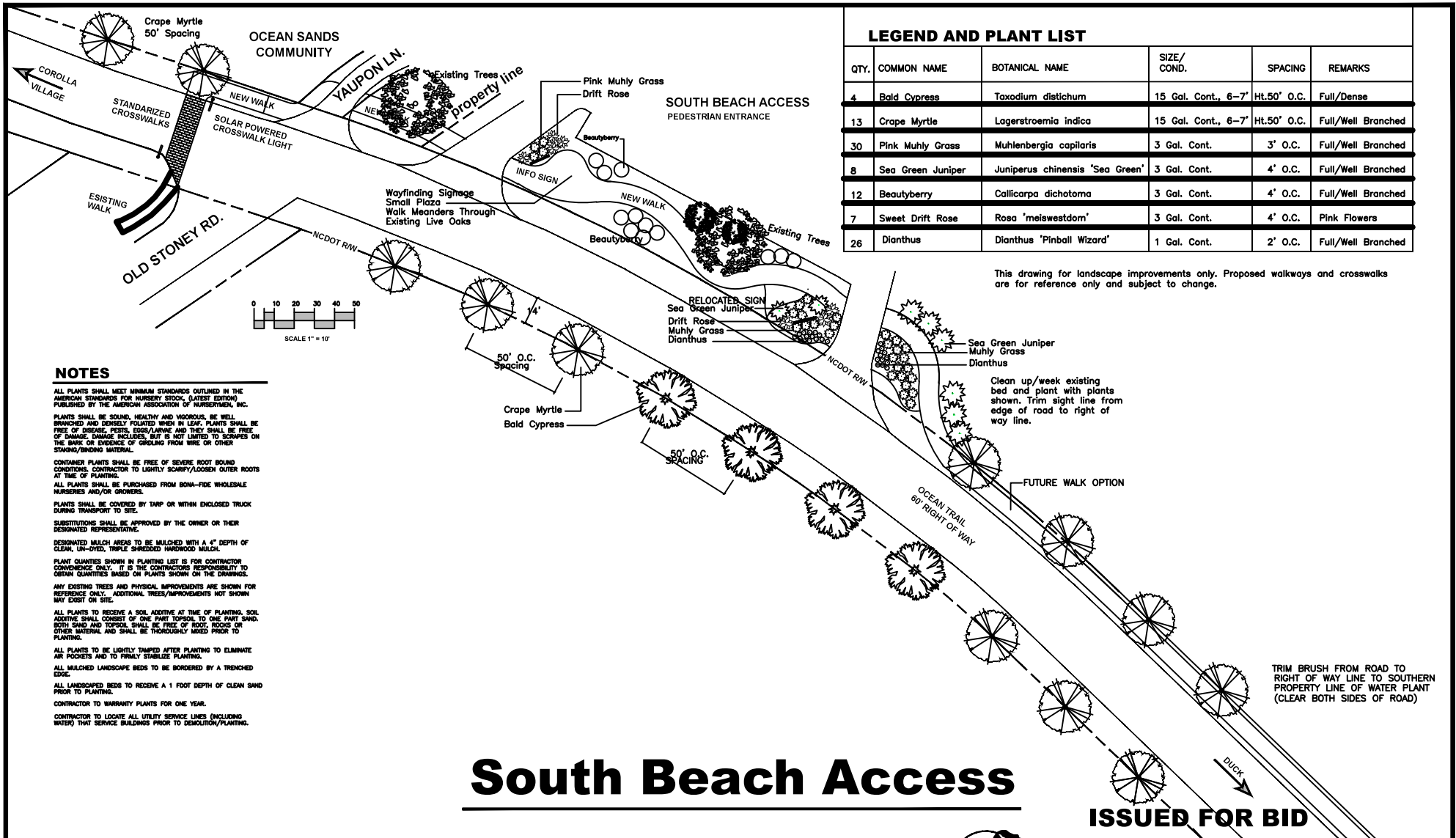
Landscape Planning & Design

Haga Head, NC 27859  
252-475-9240

**811**

Know what's below.  
Call before you dig.





**LEGEND AND PLANT LIST**

QTY.	COMMON NAME	BOTANICAL NAME	SIZE/COND.	SPACING	REMARKS
4	Bald Cypress	Taxodium distichum	15 Gal. Cont., 6-7'	Ht.50' O.C.	Full/Dense
13	Crape Myrtle	Lagerstroemia indica	15 Gal. Cont., 6-7'	Ht.50' O.C.	Full/Well Branched
30	Pink Muhly Grass	Muhlenbergia capillaris	3 Gal. Cont.	3' O.C.	Full/Well Branched
8	Sea Green Juniper	Juniperus chinensis 'Sea Green'	3 Gal. Cont.	4' O.C.	Full/Well Branched
12	Beautyberry	Callicarpa dichotoma	3 Gal. Cont.	4' O.C.	Full/Well Branched
7	Sweet Drift Rose	Rosa 'meiswestdam'	3 Gal. Cont.	4' O.C.	Pink Flowers
26	Dianthus	Dianthus 'Pinball Wizard'	1 Gal. Cont.	2' O.C.	Full/Well Branched

This drawing for landscape improvements only. Proposed walkways and crosswalks are for reference only and subject to change.

**NOTES**

- ALL PLANTS SHALL MEET MINIMUM STANDARDS OUTLINED IN THE AMERICAN STANDARDS FOR NURSERY STOCK, (LATEST EDITION) PUBLISHED BY THE AMERICAN ASSOCIATION OF NURSERYMEN, INC.
- PLANTS SHALL BE SOUND, HEALTHY AND VIGOROUS, BE WELL BRANCHED AND DENSELY FOLIATED WHEN IN LEAF. PLANTS SHALL BE FREE OF DISEASE, PESTS, EGG/SHELLS AND THEY SHALL BE FREE OF DAMAGE. DAMAGE INCLUDES, BUT IS NOT LIMITED TO SCRAPES ON THE BARK OR EVIDENCE OF GRUBBING FROM WIRE OR OTHER STAKING/BINDING MATERIAL.
- CONTAINER PLANTS SHALL BE FREE OF SEVERE ROOT BOUND CONDITIONS. CONTRACTOR TO LIGHTLY SCARIFY/LOOSEN OUTER ROOTS AT TIME OF PLANTING.
- ALL PLANTS SHALL BE PURCHASED FROM BONA-FIDE WHOLESALE NURSERIES AND/OR GROWERS.
- PLANTS SHALL BE COVERED BY TARP OR WITHIN ENCLOSED TRUCK DURING TRANSPORT TO SITE.
- SUBSTITUTIONS SHALL BE APPROVED BY THE OWNER OR THEIR DESIGNATED REPRESENTATIVE.
- DESIGNATED MULCH AREAS TO BE MULCHED WITH A 4" DEPTH OF CLEAN, UN-DYED, TRIPLE SHREDDED HARDWOOD MULCH.
- PLANT QUANTITIES SHOWN IN PLANTING LIST IS FOR CONTRACTOR CONVENIENCE ONLY. IT IS THE CONTRACTOR'S RESPONSIBILITY TO OBTAIN QUANTITIES BASED ON PLANTS SHOWN ON THE DRAWINGS.
- ANY EXISTING TREES AND PHYSICAL IMPROVEMENTS ARE SHOWN FOR REFERENCE ONLY. ADDITIONAL TREES/IMPROVEMENTS NOT SHOWN MAY EXIST ON SITE.
- ALL PLANTS TO RECEIVE A SOIL ADDITIVE AT TIME OF PLANTING. SOIL ADDITIVE SHALL CONSIST OF ONE PART TOPSOIL TO ONE PART SAND. BOTH SAND AND TOPSOIL SHALL BE FREE OF ROOT, ROCKS OR OTHER MATERIAL AND SHALL BE THOROUGHLY MIXED PRIOR TO PLANTING.
- ALL PLANTS TO BE LIGHTLY DAMPED AFTER PLANTING TO ELIMINATE AIR POCKETS AND TO FIRMLY STABILIZE PLANTING.
- ALL MULCHED LANDSCAPE BEDS TO BE BORDERED BY A TRENCHED EDGE.
- ALL LANDSCAPED BEDS TO RECEIVE A 1 FOOT DEPTH OF CLEAN SAND PRIOR TO PLANTING.
- CONTRACTOR TO WARRANTY PLANTS FOR ONE YEAR.
- CONTRACTOR TO LOCATE ALL UTILITY SERVICE LINES (INCLUDING WATER) THAT SERVICE BUILDINGS PRIOR TO DEMOLITION/PLANTING.

**South Beach Access**

**ISSUED FOR BID**

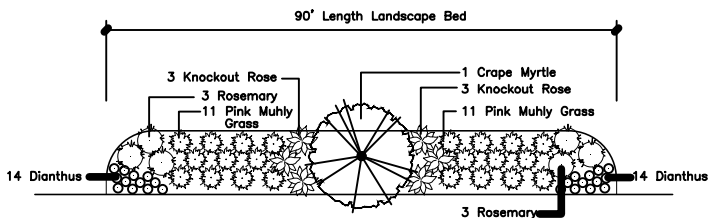
**LAUGHING GULL DESIGN STUDIO**  
 LANDSCAPE ARCHITECTURE • LAND PLANNING • ENVIRONMENTAL CONSULTING  
 KITTY HAWK, NORTH CAROLINA 27949  
 PHONE (252) 281-8747

Greenspace Landscape Planning & Design  
 1400 West, NC 27759  
 252.573.4346

Know what's below.  
 Call before you dig.

Currituck

**Corolla Beautification Project**  
 Currituck County, North Carolina  
 October 1, 2017



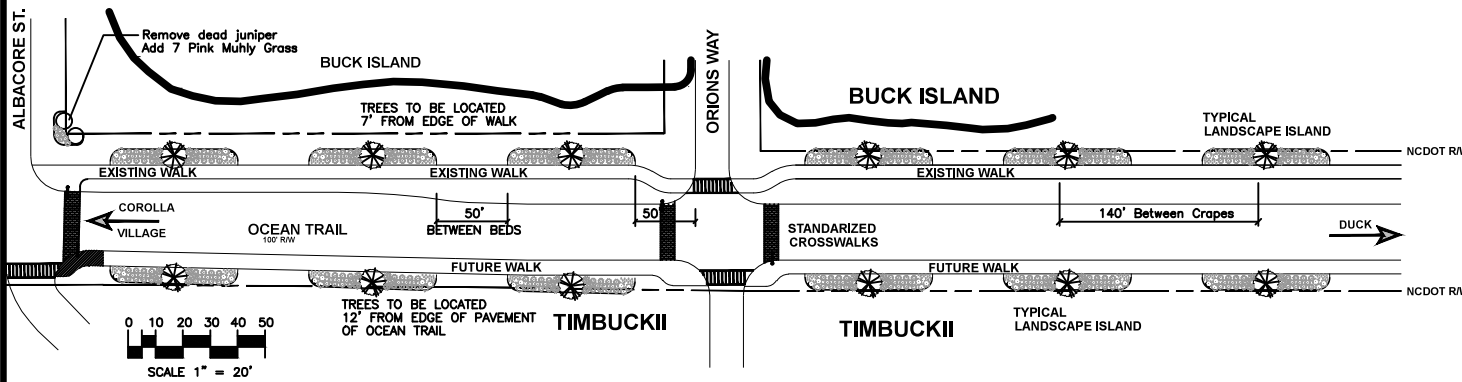
**TYPICAL LANDSCAPE ISLAND**

**NOT TO SCALE**

**LEGEND AND PLANT LIST**

QTY.	COMMON NAME	BOTANICAL NAME	SIZE/ COND.		REMARKS
1	Crape Myrtle	Lagerstroemia indica	15 Gal. Cont., 6-7' Ht.	50' O.C.	Catawba/Sioux/Tuscarora
22	Pink Muhly Grass	Muhlenbergia capillaris	3 Gal. Cont.	3' O.C.	Full/Well Branched
6	Rosemary	Rosemarinus officinalis	3 Gal. Cont.	4' O.C.	Full/Well Branched
6	Sweet Drift Rose	Rosa 'meiswestdom'	3 Gal. Cont.	4' O.C.	Pink Flowers
28	Dianthus 'Pinball Wizard'	Rosa 'Pinball Wizard/Devon Cottage'	1 Gal. Cont.	2' O.C.	Full/Well Branched

Plant Quantities shown are for one TYPICAL LANDSCAPE ISLAND.  
 Contractor to multiply plant quantities shown by 12 for Base Bid.  
 Contractor to add 7 Muhly's to corner of Albacore St for Base Bid.



**NOTES**

- ALL PLANTS SHALL MEET MINIMUM STANDARDS OUTLINED IN THE AMERICAN STANDARDS FOR NURSERY STOCK (LATEST EDITION) PUBLISHED BY THE AMERICAN ASSOCIATION OF NURSESMEN, INC.
- PLANTS SHALL BE SOUND, HEALTHY AND VIGOROUS, BE WELL BRANCHED AND DENSELY FOLIATED WHEN IN LEAF. PLANTS SHALL BE FREE OF DISEASE, PESTS, EGGS/LARVAE AND THEY SHALL BE FREE OF DAMAGE. DAMAGE INCLUDES, BUT IS NOT LIMITED TO SCRAPES ON THE BARK, OR EVIDENCE OF GRINDING FROM WIRE OR OTHER STAKING/BINDING MATERIAL.
- CONTAINER PLANTS SHALL BE FREE OF SEVERE ROOT BOUND CONDITIONS. CONTRACTOR TO LIGHTLY SCRAPY/LOOSEN OUTER ROOTS AT TIME OF PLANTING.
- ALL PLANTS SHALL BE PURCHASED FROM BONA-FIDE WHOLESALE NURSERIES AND/OR GROWERS.
- PLANTS SHALL BE COVERED BY TARP OR WITHIN ENCLOSED TRUCK DURING TRANSPORT TO SITE.
- SUBSTITUTIONS SHALL BE APPROVED BY THE OWNER OR THEIR DESIGNATED REPRESENTATIVE.
- DESIGNATED MULCH AREAS TO BE MULCHED WITH A 4" DEPTH OF CLEAN, UN-CYED, TRIPLE SHEDDED HARDWOOD MULCH.
- PLANT QUANTITIES SHOWN IN PLANTING LIST IS FOR CONTRACTOR CONFORMANCE ONLY. IT IS THE CONTRACTORS RESPONSIBILITY TO OBTAIN QUANTITIES BASED ON PLANTS SHOWN ON THE DRAWINGS.
- ANY EXISTING TREES AND PHYSICAL IMPROVEMENTS ARE SHOWN FOR REFERENCE ONLY. ADDITIONAL TREES/IMPROVEMENTS NOT SHOWN MAY EXIST ON SITE.
- ALL PLANTS TO RECEIVE A SOIL ADDITIVE AT TIME OF PLANTING. SOIL ADDITIVE SHALL CONSIST OF ONE PART TOPSOIL TO ONE PART SAND. BOTH SAND AND TOPSOIL SHALL BE FREE OF ROOTS, ROCKS OR OTHER MATERIAL AND SHALL BE THOROUGHLY MIXED PRIOR TO PLANTING.
- ALL PLANTS TO BE LIGHTLY TAMPED AFTER PLANTING TO ELIMINATE AIR POCKETS AND TO FINALLY STABILIZE PLANTING.
- ALL MULCHED LANDSCAPE BEDS TO BE BORDERED BY A TRENCHED EDGE.
- ALL LANDSCAPED BEDS TO RECEIVE A 1 FOOT DEPTH OF CLEAN SAND PRIOR TO PLANTING.
- CONTRACTOR TO WARRANTY PLANTS FOR ONE YEAR.
- CONTRACTOR TO LOCATE ALL UTILITY SERVICE LINES (INCLUDING WATER) THAT SERVICE BUILDINGS PRIOR TO DEMOLITION/PLANTING.

**Buck Island**

**ISSUED FOR BID**

**LAUGHING GULL DESIGN STUDIO**  
 LANDSCAPE ARCHITECTURE • LAND PLANNING • ENVIRONMENTAL CONSULTING  
 KITTY HAWK, NORTH CAROLINA 27949  
 PHONE (252) 281-8747

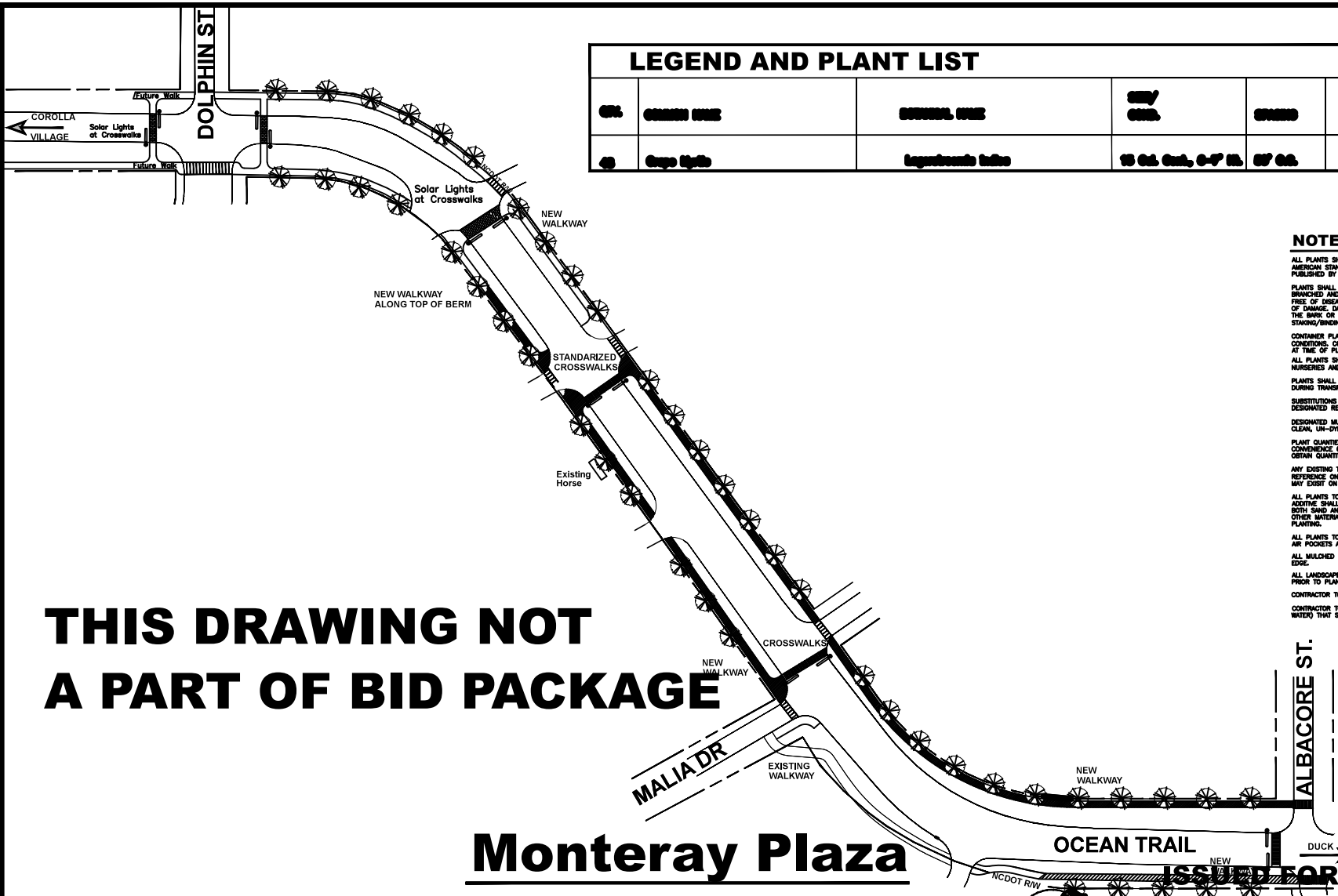
**Greenspace** Landscape Planning & Design  
 Naps Head, NC 27959  
 252-677-9348

**811**  
 APPROX. NORTH  
 Know what's below.  
 Call before you dig.

**Currituck**

**Corolla Beautification Project**  
 Currituck County, North Carolina  
 October 1, 2017

LEGEND AND PLANT LIST					
SYM.	COMMON NAME	SCIENTIFIC NAME	SIZE / CAL.	QUANTITY	REMARKS
☉	Strip Light	Landscape Light	15 Gal. Cal., 0-1' H.	67 CAL.	Color: White/Black



**NOTES**

- ALL PLANTS SHALL MEET MINIMUM STANDARDS OUTLINED IN THE AMERICAN STANDARDS FOR NURSERY STOCK, (LATEST EDITION) PUBLISHED BY THE AMERICAN ASSOCIATION OF NURSERMEN, INC.
- PLANTS SHALL BE SOUND, HEALTHY AND VIGOROUS, BE WELL BRANCHED AND DENSELY FOLIATED WHEN IN LEAF. PLANTS SHALL BE FREE OF DISEASE, PESTS, EDGES/LARVAE AND THEY SHALL BE FREE OF DAMAGE, DAMAGE INCLUDES, BUT IS NOT LIMITED TO SCRUBS ON THE BARK OR EVIDENCE OF GIRDLING FROM WIRE OR OTHER STAMPS/BURNING MATERIAL.
- CONTAINER PLANTS SHALL BE FREE OF SEVERE ROOT BOUND CONDITIONS. CONTRACTOR TO LIGHTLY SCAMPY/LOOSEN OUTER ROOTS AT TIME OF PLANTING.
- ALL PLANTS SHALL BE PURCHASED FROM BONA-FIDE WHOLESALE NURSERIES AND/OR GROWERS.
- PLANTS SHALL BE COVERED BY TARP OR WITHIN ENCLOSED TRUCK DURING TRANSPORT TO SITE.
- SUBSTITUTIONS SHALL BE APPROVED BY THE OWNER OR THEIR DESIGNATED REPRESENTATIVE.
- DESIGNATED MULCH AREAS TO BE MULCHED WITH A 4" DEPTH OF CLEAN, UN-DYED, TRIPLE SHREDDED HARDWOOD MULCH.
- PLANT QUANTITIES SHOWN IN PLANTING LIST IS FOR CONTRACTOR CONFORMANCE ONLY. IT IS THE CONTRACTORS RESPONSIBILITY TO OBTAIN QUANTITIES BASED ON PLANTS SHOWN ON THE DRAWINGS.
- ANY EXISTING TREES AND PHYSICAL IMPROVEMENTS ARE SHOWN FOR REFERENCE ONLY. ADDITIONAL TREES/IMPROVEMENTS NOT SHOWN MAY EXIST ON SITE.
- ALL PLANTS TO RECEIVE A SOIL ADDITIVE AT TIME OF PLANTING. SOIL ADDITIVE SHALL CONSIST OF ONE PART TOPSOIL TO ONE PART SAND. BOTH SAND AND TOPSOIL SHALL BE FREE OF ROOT, ROCKS OR OTHER MATERIAL AND SHALL BE THOROUGHLY MIXED PRIOR TO PLANTING.
- ALL PLANTS TO BE LIGHTLY TAMPERED AFTER PLANTING TO ELIMINATE AIR POCKETS AND TO FIRMLY STABILIZE PLANTING.
- ALL MULCHED LANDSCAPE BEDS TO BE BORDERED BY A TRENCHED EDGE.
- ALL LANDSCAPED BEDS TO RECEIVE A 1 FOOT DEPTH OF CLEAN SAND PRIOR TO PLANTING.
- CONTRACTOR TO WARRANTY PLANTS FOR ONE YEAR.
- CONTRACTOR TO LOCATE ALL UTILITY SERVICE LINES (INCLUDING WATER) THAT SERVICE BUILDINGS PRIOR TO DEMOLITION/PLANTING.

**THIS DRAWING NOT A PART OF BID PACKAGE**

**Monterey Plaza**

**OCEAN TRAIL**  
**ISSUED FOR BID**

**LAUGHING GULL DESIGN STUDIO**  
LANDSCAPE ARCHITECTURE • LAND PLANNING • ENVIRONMENTAL CONSULTING  
KITTY HAWK, NORTH CAROLINA 27849  
PHONE (252) 281-8747

Greenspace Landscape Planning & Design  
304-9729338

Know what's below.  
Call before you dig.

Currituck

**Corolla Beautification Project**  
Currituck County, North Carolina  
October 1, 2017

**NOTES**

ALL PLANTS SHALL MEET MINIMUM STANDARDS OUTLINED IN THE AMERICAN STANDARDS FOR NURSERY STOCK, (LATEST EDITION), PUBLISHED BY THE AMERICAN ASSOCIATION OF NURSEYMEN, INC.

PLANTS SHALL BE SOUND, HEALTHY AND VIGOROUS, BE WELL BRANCHED AND DENSELY FOLIAGED WHEN IN LEAF. PLANTS SHALL BE FREE OF DISEASE, PESTS, EGGS/LARVAE AND THEY SHALL BE FREE OF DAMAGE, DAMAGE INCLUDES, BUT IS NOT LIMITED TO SCRAPES ON THE BARK OR EVIDENCE OF GROWING FROM WIRE OR OTHER STAMING/BINDING MATERIAL.

CONTAINER PLANTS SHALL BE FREE OF SEVERE ROOT BOUND CONDITIONS. CONTRACTOR TO LIGHTLY SCRAPE/LOOSEN OUTER ROOTS AT TIME OF PLANTING.

ALL PLANTS SHALL BE PURCHASED FROM BONA-FIDE WHOLESALE NURSERIES AND/OR GROWERS.

PLANTS SHALL BE COVERED BY TARP OR WITH ENCLOSED TRUCK DURING TRANSPORT TO SITE.

SUBSTITUTIONS SHALL BE APPROVED BY THE OWNER OR THEIR DESIGNATED REPRESENTATIVE.

DESIGNATED MULCH AREAS TO BE MULCHED WITH A 4" DEPTH OF CLEAN, UN-DYED, TRIPLE SHREDDED HARDWOOD MULCH.

PLANT QUANTITIES SHOWN IN PLANTING LIST IS FOR CONTRACTOR CONFORMANCE ONLY. IT IS THE CONTRACTOR'S RESPONSIBILITY TO OBTAIN QUANTITIES BASED ON PLANTS SHOWN ON THE DRAWINGS.

ANY EXISTING TREES AND PHYSICAL IMPROVEMENTS ARE SHOWN FOR REFERENCE ONLY. ADDITIONAL TREES/IMPROVEMENTS NOT SHOWN MAY EXIST ON SITE.

ALL PLANTS TO RECEIVE A SOIL ADDITIVE AT TIME OF PLANTING. SOIL ADDITIVE SHALL CONSIST OF ONE PART TOPSOIL TO ONE PART SAND. BOTH SAND AND TOPSOIL SHALL BE FREE OF ROOT, ROCKS OR OTHER MATERIAL AND SHALL BE THOROUGHLY MIXED PRIOR TO PLANTING.

ALL PLANTS TO BE LIGHTLY TAMPED AFTER PLANTING TO ELIMINATE AIR POCKETS AND TO FIRMLY STABILIZE PLANTING.

ALL MULCHED LANDSCAPE BEDS TO BE BORDERED BY A TRENCHED EDGE.

ALL LANDSCAPED BEDS TO RECEIVE A 1 FOOT DEPTH OF CLEAN SAND PRIOR TO PLANTING.

CONTRACTOR TO WARRANTY PLANTS FOR ONE YEAR.

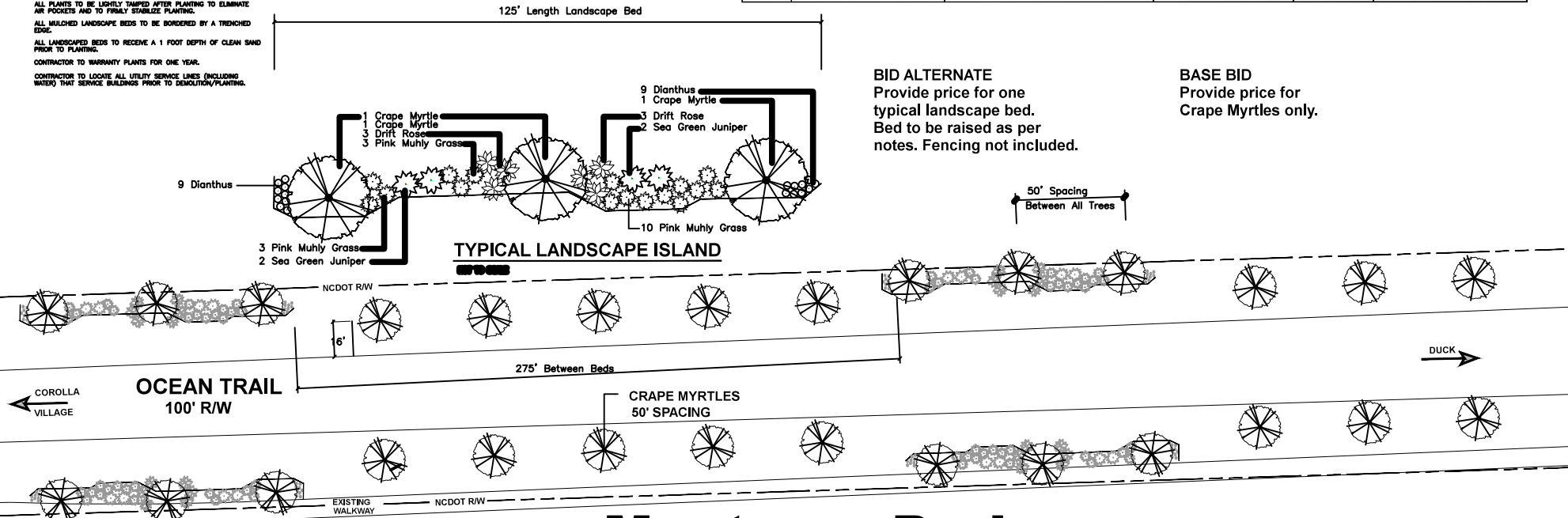
CONTRACTOR TO LOCATE ALL UTILITY SERVICE LINES (INCLUDING WATER) THAT SERVICE BUILDINGS PRIOR TO DEMOLITION/PLANTING.

**LEGEND AND PLANT LIST**

QTY.	COMMON NAME	BOTANICAL NAME	SIZE/ COND.	SPACING	REMARKS
210	Crape Myrtle	Lagerstroemia indica	15 Gal. Cont., 6-7' Ht.	50' O.C.	Catawba/Sious/Tuscarora
	Pink Muhly Grass	Muhlenbergia capilaris	3 Gal. Cont.	3' O.C.	Full/Well Branched
	Sea Green Juniper	Juniperus chinensis 'Sea Green'	3 Gal. Cont.	4' O.C.	Full/Well Branched
	Sweet Drift Rose	Rosa 'meiswestdom'	3 Gal. Cont.	4' O.C.	Pink Flowers
	Dianthus 'Pinball Wizard'	Rosa 'Pinball Wizard/Devon Cottage'	1 Gal. Cont.	2' O.C.	Full/Well Branched

**BID ALTERNATE**  
Provide price for one typical landscape bed. Bed to be raised as per notes. Fencing not included.

**BASE BID**  
Provide price for Crape Myrtles only.



**Monterey Park**

**ISSUED FOR BID**

**LAUGHING GULL DESIGN STUDIO**  
LANDSCAPE ARCHITECTURE • LANDPLANNING • ENVIRONMENTAL CONSULTING  
KITTY HAWK, NORTH CAROLINA 27949  
PHONE (252) 281-8747

**Greenspace** Landscape Planning & Design  
Nags Head, NC 27959  
252.673.8346

**811**  
Know what's below.  
Call before you dig.



**Corolla Beautification Project**  
Currituck County, North Carolina

October 1, 2017

**DWG CBP 5**

LEGEND AND PLANT LIST					
QTY.	COMMON NAME	BOTANICAL NAME	SIZE/COND.	SPACING	REMARKS
8	Crape Myrtle	Lagerstroemia indica	15 Gal. Cont., 6-7' Ht.	50' O.C.	Tuscarora
37	Loblolly Pine	Pinus taeda	15 Gal. Cont., 6-8' Ht.	10' O.C.	Staggered Rows

**NOTES**

ALL PLANTS SHALL MEET MINIMUM STANDARDS OUTLINED IN THE AMERICAN STANDARDS FOR NURSERY STOCK (LATEST EDITION) PUBLISHED BY THE AMERICAN ASSOCIATION OF NURSERYMEN, INC.

PLANTS SHALL BE SOUND, HEALTHY AND VIGOROUS, BE WELL BRANCHED AND DENSELY FOLIATED WHEN IN LEAF. PLANTS SHALL BE FREE OF DISEASE, PESTS, EGGS/LARVAE AND THEY SHALL BE FREE OF DAMAGE. DAMAGE INCLUDES, BUT IS NOT LIMITED TO SCRAPES ON THE BARK OR EVIDENCE OF CRACKING FROM WIRE OR OTHER STAKING/BINDING MATERIAL.

CONTAINER PLANTS SHALL BE FREE OF SEVERE ROOT BOUND CONDITIONS. CONTRACTOR TO LIGHTLY SCAMP/LOOSEN OUTER ROOTS AT TIME OF PLANTING.

ALL PLANTS SHALL BE PURCHASED FROM BONA-FIDE WHOLESALE NURSERIES AND/OR GROWERS.

PLANTS SHALL BE COVERED BY TWP OR WITHIN ENCLOSED TRUCK DURING TRANSPORT TO SITE.

SUBSTITUTIONS SHALL BE APPROVED BY THE OWNER OR THEIR DESIGNATED REPRESENTATIVE.

DESIGNATED MULCH AREAS TO BE MULCHED WITH A 4" DEPTH OF CLEAN, UN-OYED, TRIPLE SCREENED HARDWOOD MULCH.

PLANT QUANTITIES SHOWN IN PLANTING LIST IS FOR CONTRACTOR CONFORMANCE ONLY. IT IS THE CONTRACTOR'S RESPONSIBILITY TO OBTAIN QUANTITIES BASED ON PLANTS SHOWN ON THE DRAWINGS.

ANY EXISTING TREES AND PHYSICAL IMPROVEMENTS ARE SHOWN FOR REFERENCE ONLY. ADDITIONAL TREES/IMPROVEMENTS NOT SHOWN MAY EXIST ON SITE.

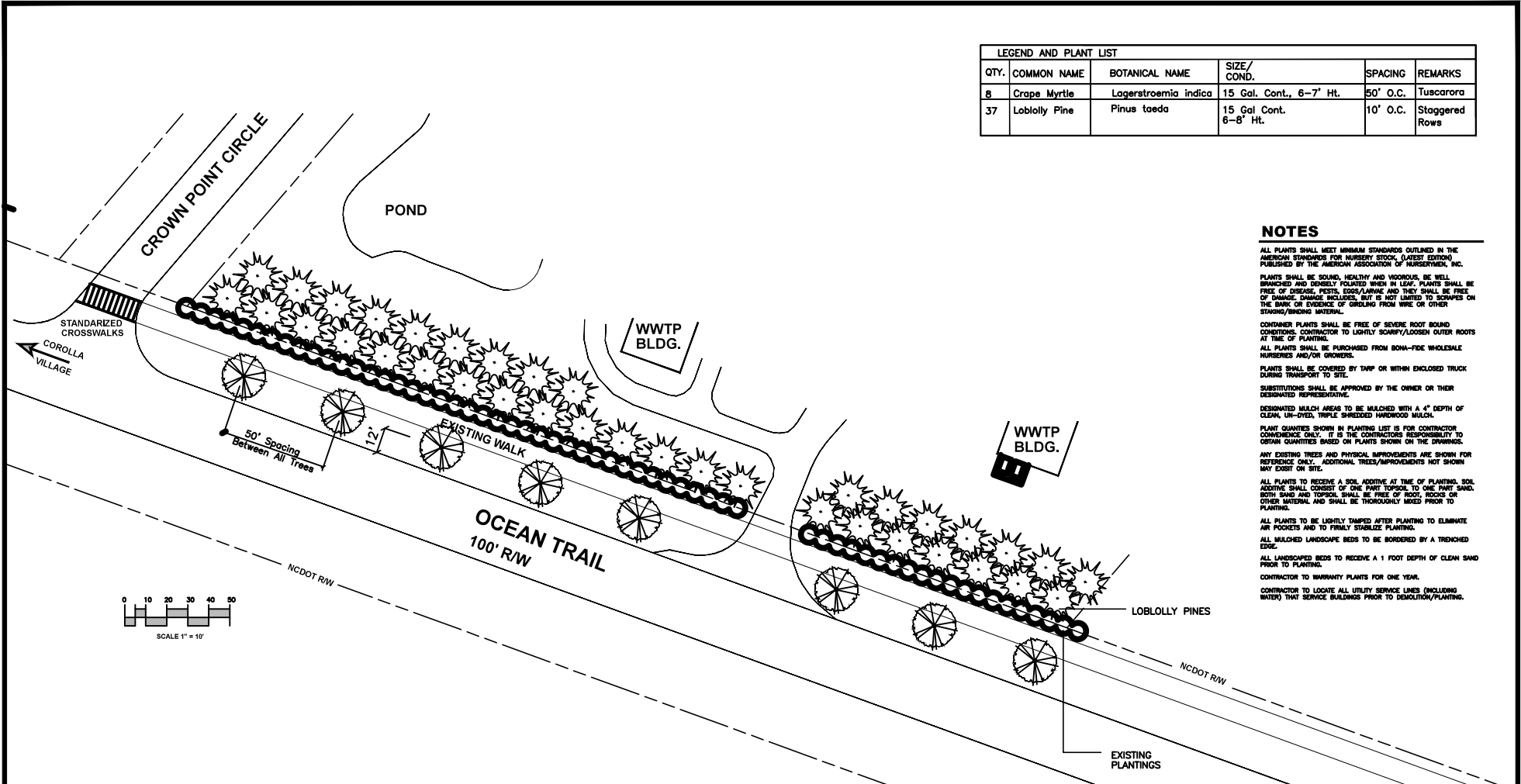
ALL PLANTS TO RECEIVE A SOIL ADDITIVE AT TIME OF PLANTING. SOIL ADDITIVE SHALL CONSIST OF ONE PART TOPSOIL TO ONE PART SAND. BOTH SAND AND TOPSOIL SHALL BE FREE OF ROOT, ROCKS OR OTHER MATERIAL AND SHALL BE THOROUGHLY MIXED PRIOR TO PLANTING.

ALL PLANTS TO BE LIGHTLY DAMPED AFTER PLANTING TO ELIMINATE AIR POCKETS AND TO FIRMLY STABILIZE PLANTING.

ALL LANDSCAPED BEDS TO RECEIVE A 1 FOOT DEPTH OF CLEAN SAND PRIOR TO PLANTING.

CONTRACTOR TO WARRANTY PLANTS FOR ONE YEAR.

CONTRACTOR TO LOCATE ALL UTILITY SERVICE LINES (INCLUDING WATER) THAT SERVICE BUILDINGS PRIOR TO DEMOLITION/PLANTING.



# Crown Point

**ISSUED FOR BID**

**LAUGHING GULL DESIGN STUDIO**  
 LANDSCAPE ARCHITECTURE • LAND PLANNING • ENVIRONMENTAL CONSULTING  
 KITTY HAWK, NORTH CAROLINA 27949  
 PHONE (252) 281-8747

Greenspace

Landscape Planning & Design

3400 Road, NC 27599  
 252.727.0434

**811**  
 Know what's below.  
 Call before you dig.



**Corolla Beautification Project**  
 Currituck County, North Carolina  
 October 1, 2017

**NOTES**

ALL PLANTS SHALL MEET MINIMUM STANDARDS OUTLINED IN THE AMERICAN STANDARDS FOR NURSERY STOCK, (LATEST EDITION) PUBLISHED BY THE AMERICAN ASSOCIATION OF NURSEMEN, INC.

PLANTS SHALL BE SOUND, HEALTHY AND VIGOROUS, BE WELL BRANCHED AND DENSELY FOLIATED WHEN IN LEAF. PLANTS SHALL BE FREE OF DISEASE, PESTS, EGGS/LARVAE AND THEY SHALL BE FREE OF DAMAGE. DAMAGE INCLUDES, BUT IS NOT LIMITED TO SCRAPES ON THE BARK OR EVIDENCE OF GIRDLING FROM WIRE OR OTHER STAKING/BINDING MATERIAL.

CONTAINER PLANTS SHALL BE FREE OF SEVERE ROOT BOUND CONDITIONS. CONTRACTOR TO LIGHTLY SCRAPE/LOOSEN OUTER ROOTS AT TIME OF PLANTING. ALL PLANTS SHALL BE PURCHASED FROM BONA-FIDE WHOLESALE NURSERIES AND/OR GROWERS.

PLANTS SHALL BE COVERED BY TARP OR WITHIN ENCLOSED TRUCK DURING TRANSPORT TO SITE.

SUBSTITUTIONS SHALL BE APPROVED BY THE OWNER OR THEIR DESIGNATED REPRESENTATIVE.

DESIGNATED MULCH AREAS TO BE MULCHED WITH A 4" DEPTH OF CLEAN, UN-DYED, TRIPLE SHREDED HARDWOOD MULCH.

PLANT QUANTITIES SHOWN IN PLANTING LIST IS FOR CONTRACTOR CONVENIENCE ONLY. IT IS THE CONTRACTORS RESPONSIBILITY TO OBTAIN QUANTITIES BASED ON PLANTS SHOWN ON THE DRAWINGS.

ANY EXISTING TREES AND PHYSICAL IMPROVEMENTS ARE SHOWN FOR REFERENCE ONLY. ADDITIONAL TREES/IMPROVEMENTS NOT SHOWN MAY EXIST ON SITE.

ALL PLANTS TO RECEIVE A SOIL ADDITIVE AT TIME OF PLANTING. SOIL ADDITIVE SHALL CONSIST OF ONE PART TOPSOIL TO ONE PART SAND. BOTH SAND AND TOPSOIL SHALL BE FREE OF ROOT, ROCKS OR OTHER MATERIAL AND SHALL BE THOROUGHLY MIXED PRIOR TO PLANTING.

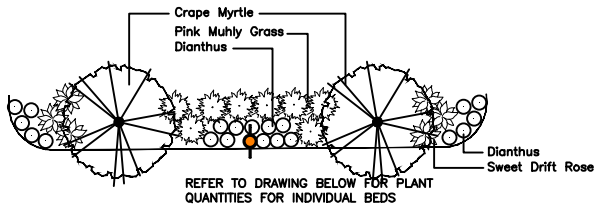
ALL PLANTS TO BE LIGHTLY TAMPED AFTER PLANTING TO ELIMINATE AIR POCKETS AND TO FIRMLY STABILIZE PLANTING.

ALL MULCHED LANDSCAPE BEDS TO BE BORDERED BY A TRENCHED EDGE.

ALL LANDSCAPED BEDS TO RECEIVE A 1 FOOT DEPTH OF CLEAN SAND PRIOR TO PLANTING.

CONTRACTOR TO WARRANTY PLANTS FOR ONE YEAR.

CONTRACTOR TO LOCATE ALL UTILITY SERVICE LINES (INCLUDING WATER) THAT SERVICE BUILDINGS PRIOR TO DEMOLITION/PLANTING.



**TYPICAL LANDSCAPE ISLAND**

NOT TO SCALE

**SUN REALTY**

- LScape Bed A**  
 2 Crape Myrtle  
 8 Pink Muhly Grass  
 6 Drift Rose  
 20 Dianthus

- LScape Bed A**  
 2 Crape Myrtle  
 8 Pink Muhly Grass  
 6 Drift Rose  
 20 Dianthus

- LScape Bed A**  
 2 Crape Myrtle  
 8 Pink Muhly Grass  
 6 Drift Rose  
 20 Dianthus

- LScape Bed A**  
 3 Crape Myrtle  
 20 Pink Muhly Grass  
 6 Drift Rose  
 33 Dianthus

PERIMETER ST  
 NCDOT RW

Historic Street Lights with Event Banners

Crape Myrtles on East Side of Ocean Trail to be Planted 26' From Edge of Pavement

**OCEAN TRAIL**  
 100' R/W

**COUNTY OFFICES**



Crape Myrtles on West Side of Ocean Trail to be Planted 35' From Edge of Pavement

- LScape Bed A**  
 1 Crape Myrtle  
 6 Drift Rose

- LScape Bed A**  
 2 Crape Myrtle  
 8 Pink Muhly Grass  
 6 Drift Rose  
 10 Dianthus

- LScape Bed A**  
 1 Crape Myrtle  
 6 Drift Rose

- LScape Bed A**  
 1 Crape Myrtle  
 6 Drift Rose

- LScape Bed A**  
 2 Crape Myrtle  
 6 Pink Muhly Grass  
 6 Drift Rose  
 14 Dianthus

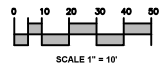
- LScape Bed A**  
 2 Crape Myrtle  
 11 Pink Muhly Grass  
 8 Drift Rose  
 22 Dianthus

WINKS

WILD HORSE TOURS  
 BEER GARDEN

TWIDDY

OLD LIFE  
 SAVING STATION



**County Office**

**ISSUED FOR BID**

**LEGEND AND PLANT LIST**

QTY.	COMMON NAME	BOTANICAL NAME	SIZE/ COND.	SPACING	REMARKS
18	Crape Myrtle	Lagerstroemia indica	15 Gal. Cont., 6-9" H.C.	6-9" H.C.	Catawba
67	Pink Muhly Grass	Muhlenbergia capilaris	3 Gal. Cont.	3' O.C.	Full/Well Branched
60	Sweet Drift Rose	Rosa 'meiswestdom'	3 Gal. Cont.	4' O.C.	Pink Flowers
139	Dianthus 'Pinball Wizard'	Rosa 'Pinball Wizard/Devon'	Co. Cont.	2' O.C.	Full/Well Branched

**LAUGHING GULL DESIGN STUDIO**  
 LANDSCAPE ARCHITECTURE • LANDPLANNING • ENVIRONMENTAL CONSULTING  
 KITTY HAWK, NORTH CAROLINA 27949  
 PHONE (252) 281-8747

Greenspace  
 Landscape Planning & Design  
 7000 Hwy 108, NC 27709  
 252.737.6800



Know what's below.  
 Call before you dig.



**Corolla Beautification Project**  
 Currituck County, North Carolina

October 1, 2017

**DWG CBP 7**