

3/4" THICK EXTERIOR GRADE PLYWOOD SECURE TO FACE OF FRAMING AND PILINGS WITH 2-1/2" LONG GALVANIZED SCREWS AT 8" O.C.

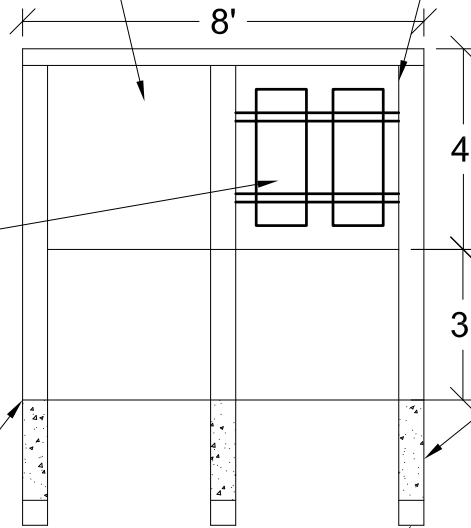
PRESSURE TREATED 2X4 FRAMING FLUSH WITH FACE OF 6X6 SECURE FRAMING WITH MINIMUM 3-1/2" DECK SCREWS (TYP)

SECURE PANELS TO BACK BOARD WITH GALVANIZED HARDWARE EXTENDING THROUGH PLYWOOD AND 1-1/2" INTO FRAMING (TYP)

LEVEL POST AND BACK FILL HOLE WITH 3000# CONCRETE (TYP OF 3)

FINISHED GRADE

6X6 PRESSURE TREATED POST, MINIMUM EMBEDMENT = 6' (TYP OF 3)



ADDENDUM #1

ELECTRICAL PANEL MOUNTING DETAIL

SCALE: 1/4" = 1'

DRAWN: JAK

APPROVED: RMK

DATE: 08/01/2016

COASTAL JOB NO. : 16-033

COASTAL ENGINEERING

2406 Princess Anne Road, Virginia Beach, VA 23456

Phone 757-563-9027

Fax 757-563-9028

AD-1

