

Imagine Currituck Environment



Environment

JANUARY 2017

LORA EDDY, COASTAL ENGAGEMENT COORDINATOR

BRIAN BOUTIN, DIRECTOR ALBEMARLE-PAMLICO SOUNDS PROGRAM

The Nature
Conservancy



What we do:

Our Mission: “Conserving the lands and waters on which all life depends.”

- Non-profit
- We work in 69 countries around the world
- Over 3,500 employees
- Partner with other organizations
- Guided by science

TNC's work in Currituck:

- Currently own 243 acres
- Purchased, Assisted or Transfer 4,424 acres
- Partner with Federal, State, Non-profit and local communities to work on conservation

Details | Basemap

Share | Print | Measure | Bookmarks

Find address or place

About | Content | Legend

Legend

- Piedmont
- Southern Blue Ridge

tnc_lands_AGO_10_2016 - Huc6



tnc_lands_AGO_10_2016 - Current TNC Ownership

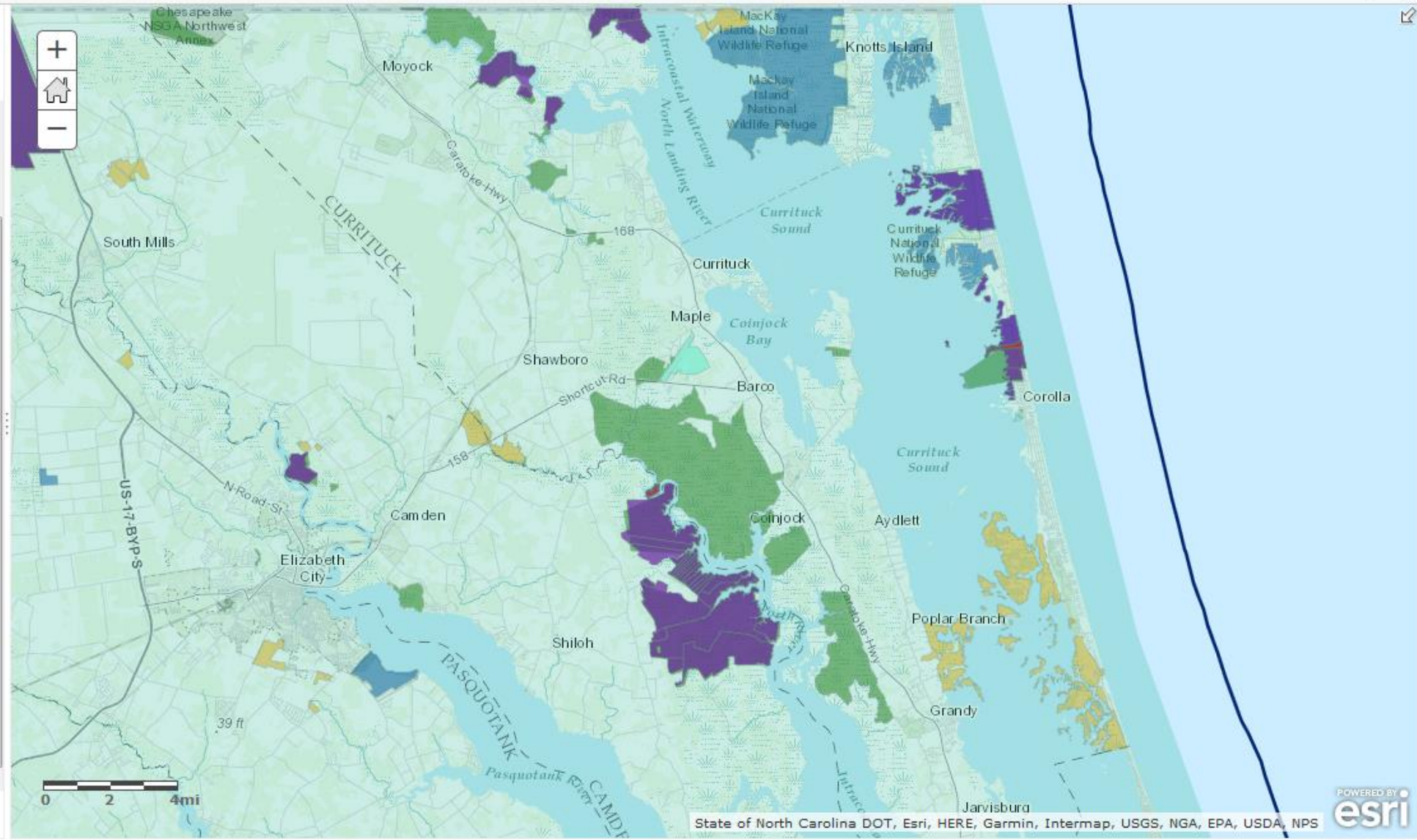


tnc_lands_AGO_10_2016 - Purchases, Transfers, Assists



tnc_lands_AGO_10_2016 - Managed Lands

- Federal
- Local Government
- Private
- State



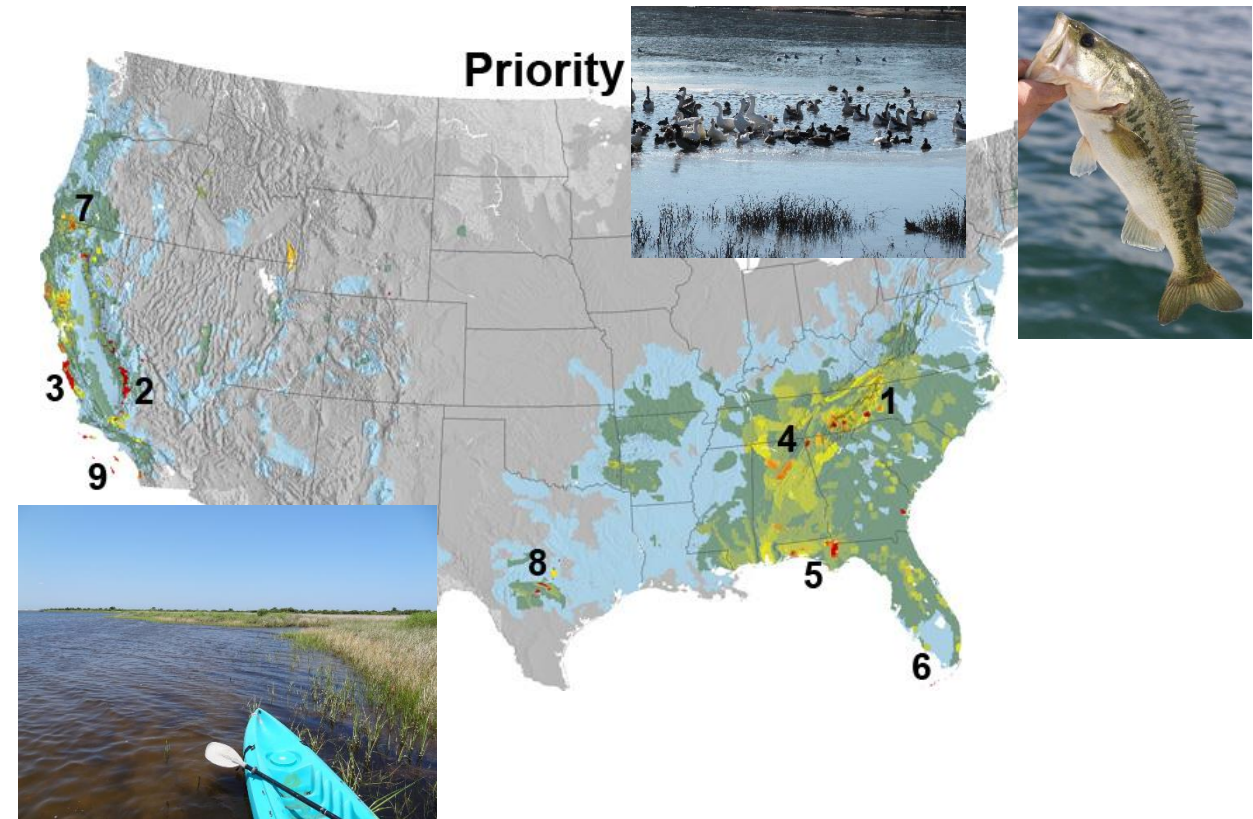
**Our cities are developing 5 times more land/person than in the 1970s

Why Environment?

- Retain Currituck's unique sense of place
- Currituck has the opportunity to grow and conserve
- In NC over **1 acre** of land is developed/person and rate of land development is growing faster than the rate of population growth
- Land planning ensures that the benefits of nature – clean air & water, recreational uses, natural protection from coastal hazards and growth can occur together

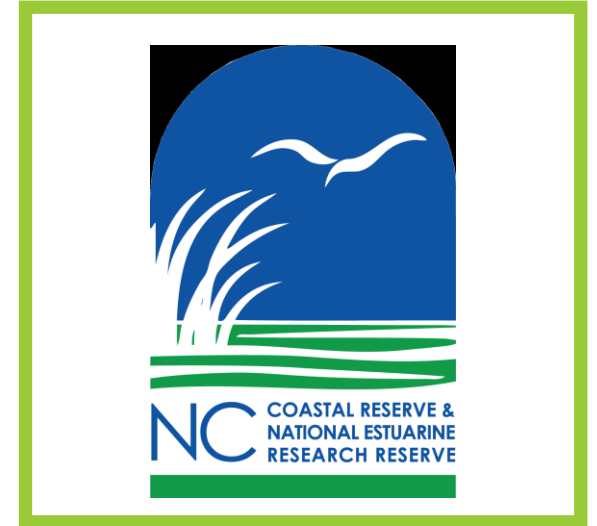
Currituck's Environmental Resources

- A Conservation Priority area because of high diversity of plants, animals and habitats
 - Currituck Sound - low salinity estuary, winter water fowl, bass & perch fishery, submerged aquatic vegetation
 - Wetlands
 - Maritime forest



Conservation in Currituck

- Mackay Island and Currituck National Wildlife Refuge
- Currituck Banks Coastal Estuarine Reserve
- Audubon Pine Island Sanctuary
- Northwest River Marsh and North River Game Lands
- North Carolina Coastal Land Trust

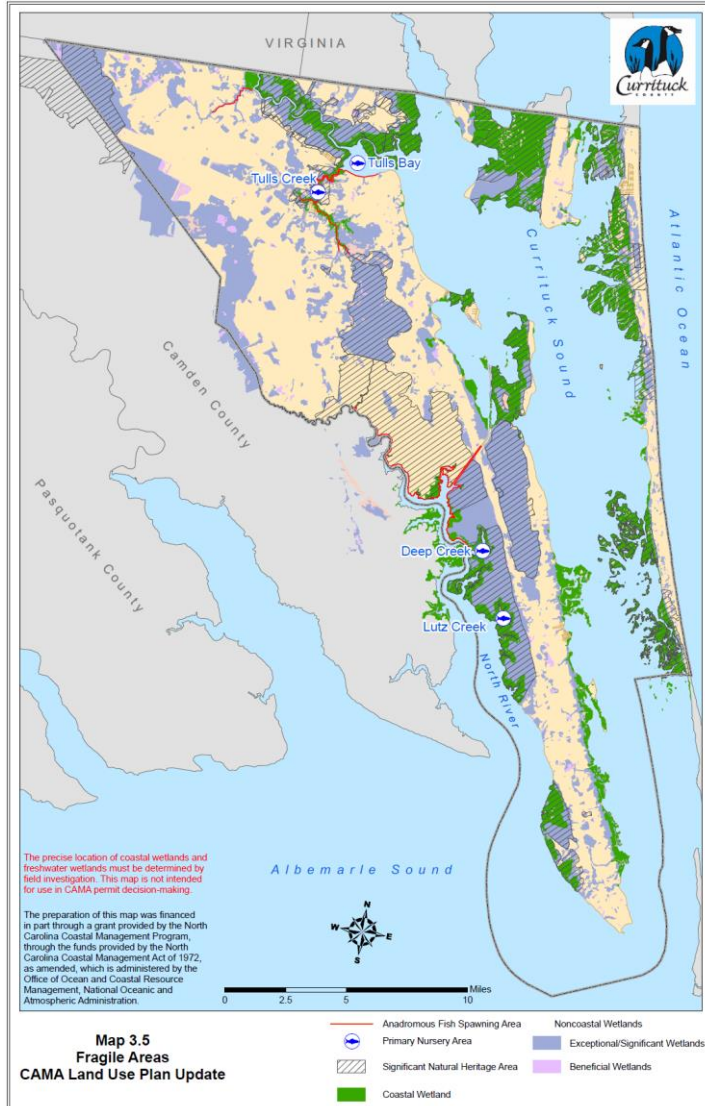


Threats to Currituck's Environmental Resources

- Decreased Water Quality and Invasive Plants
- Impact from Development Patterns – fragmenting habitat
- Climate Change



Current Land Use Plan Map 3.5 – Fragile Areas



Environmental Data

- NC Wildlife Resources Commission Natural Heritage Data
- Green Sea Blueway and Greenway Management Plan
- North Carolina Coastal Land Trust's Land Parcel Prioritization for Water Quality
- US Army Corps of Engineers Currituck Sound Ecosystem Restoration Study

Land Use and Planning Best Practices for the Environment



- Protect large, wide blocks of contiguous habitat
- Maintain connection between core habitat areas – Using Greenways or Agricultural Districts
- Use Environmental data to help guide land use plan, incentives, ordinances and development design
- Conserve Floodplains and river shorelines



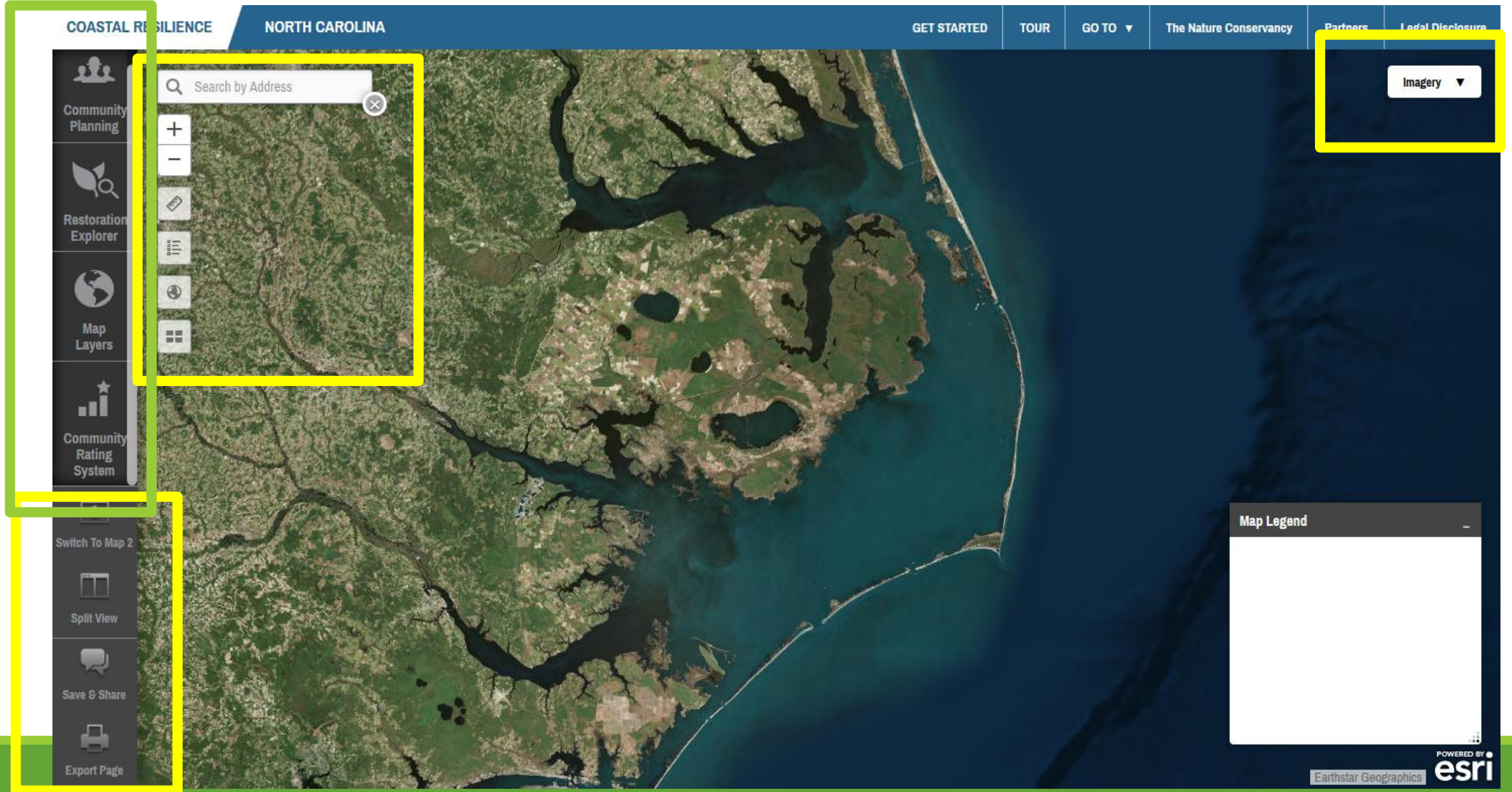
Coastal Resilience is a global program led by The Nature Conservancy to examine nature's role in reducing coastal flood risk.

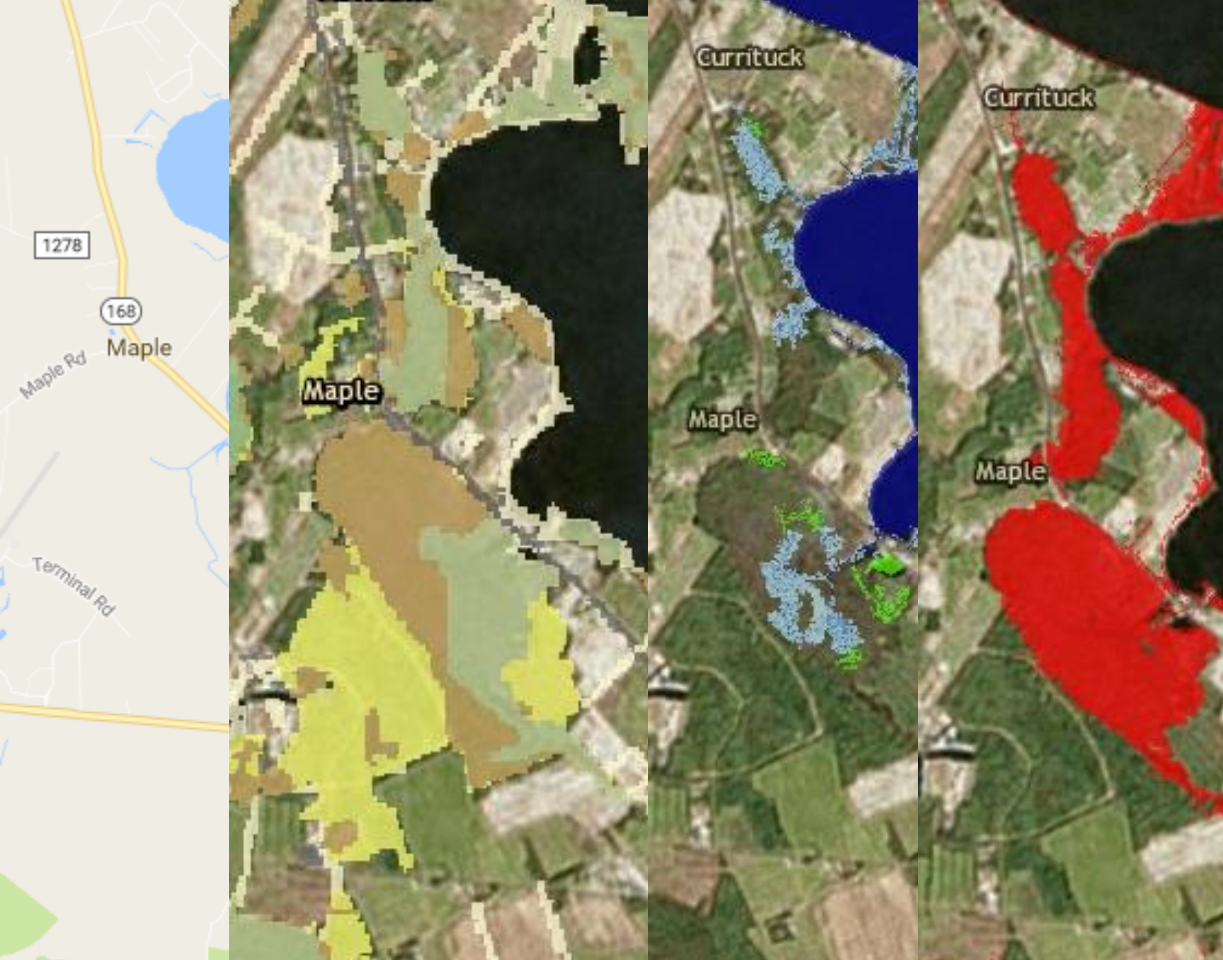
The Coastal Resilience decision support tool allows users to:

- view potential impacts of sea level rise, surge from storms and hurricanes, and inland flooding
- combine coastal habitat and exposure with socio-economic data to identify where habitat management may most reduce risks
- examine natural and built coastal defense strategies
- compare risk and vulnerability indicators across countries

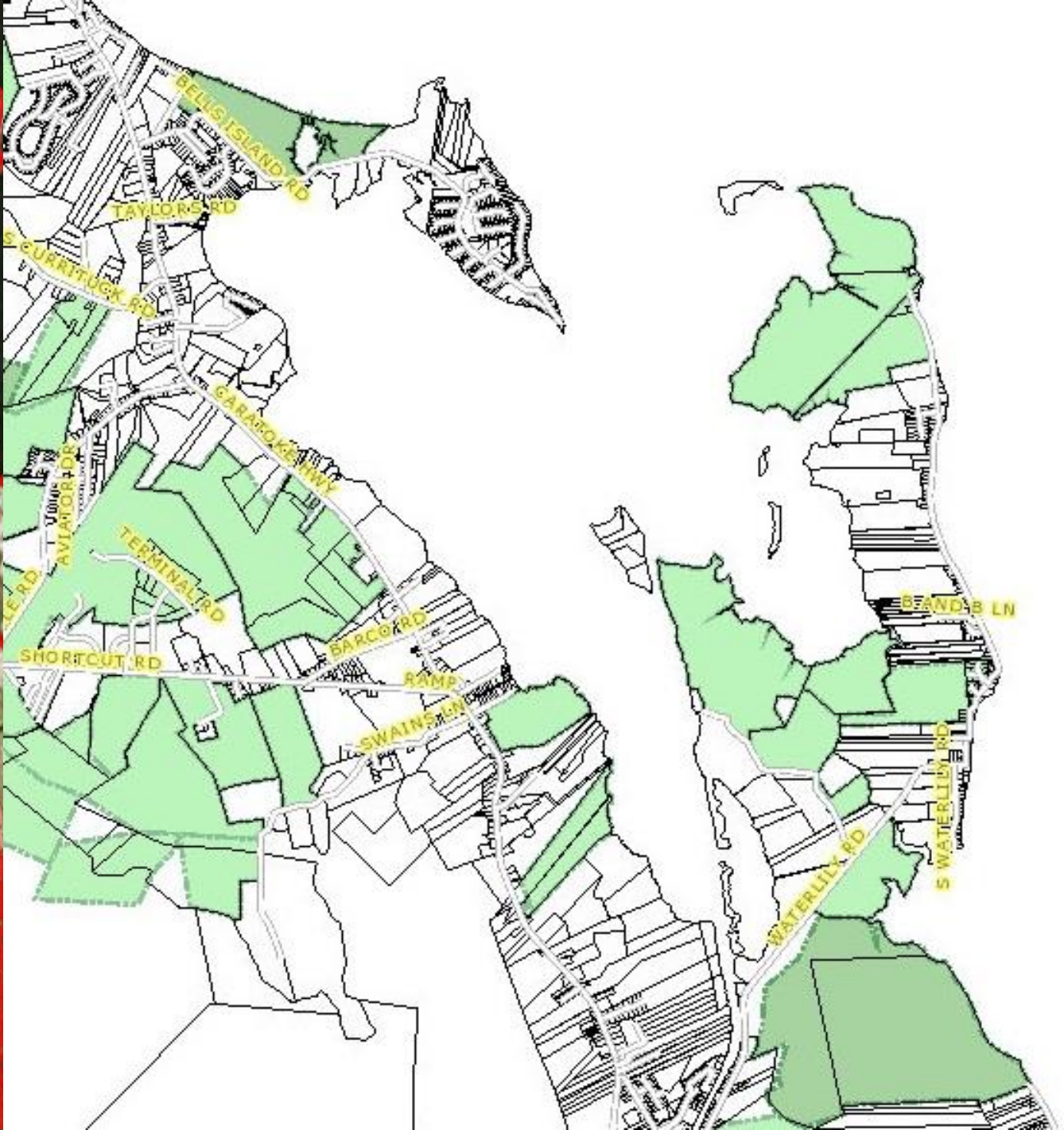
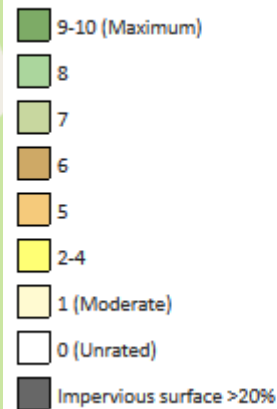


The Coastal Resilience Tool(box)

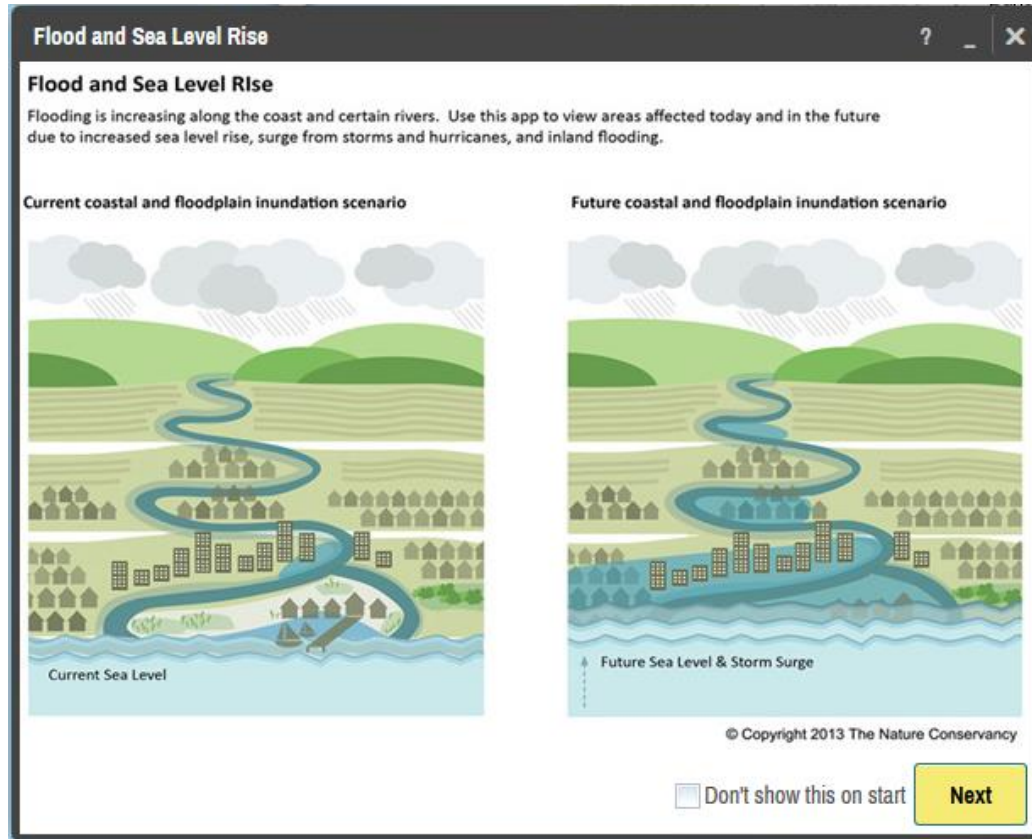
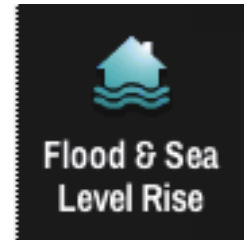




Biodiversity & Wildlife Habitat Ass

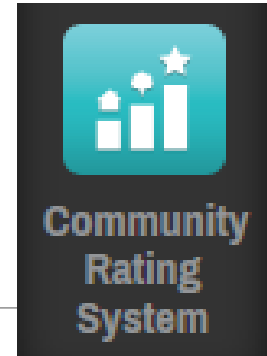


NEW Flood and Sea Level Rise app



- Working to develop a Flood app
- To identify vulnerable areas that are affected today and in the future due to sea level rise, surge from storms and hurricanes, and inland flooding
- Supports Land Use Planning (LUP) decisions

Community Rating System Explorer



COASTAL RESILIENCE NORTH CAROLINA GET STARTED TOUR GO TO The Nature Conservancy Partners

Community Rating System ? _ x

Download data for all eligible OSP areas for my CRS application Home

Dare County NC x

Open Space Preservation (OSP) 420 Activity Points

0 200 400 600 800 1,000 1,200 1,400 1,600 1,800 2,020

91 Current Points 382 Potential Points

OSP 420 Elements Summary

- Current Class: 8 (OSP contributes 91 out of 1,339 total CRS points)
- Current NFIP Discounts: 10% for policy holders in floodplain & 5% outside of floodplain
- Open Space Preservation (422a): 6,302 acres & 310 points
- Natural Functioning Open Space (422c): 3,600 acres & 21 points
- Coastal Erosion Open Space (422c): 153 acres & 38 points
- Natural Shoreline Protection (422g): 12 points in entire CRS

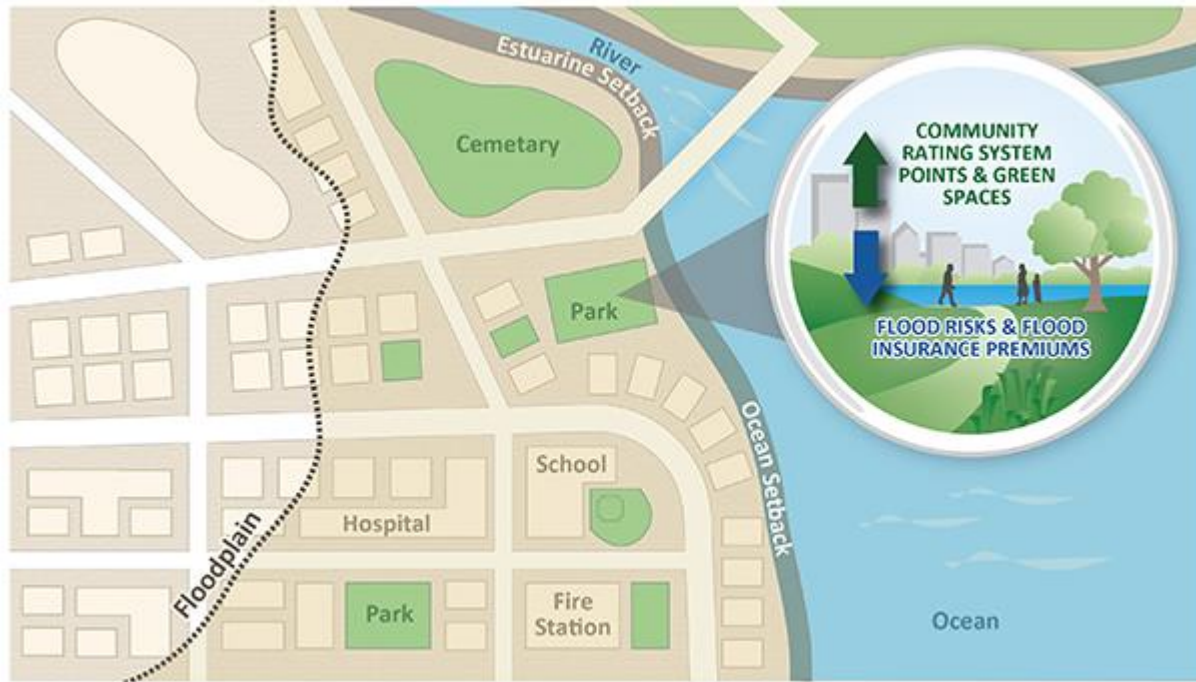
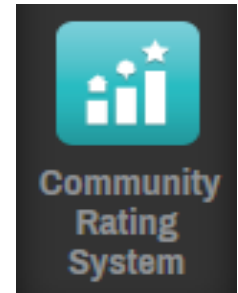
Download Data

Opaque Transparent

Map Legend

- Community Boundary
- OSP eligible areas
- Impact Adjusted Floodplain / SFHA
 - Zones A and AE
 - Zone VE

Community Rating System Explorer



- Built for local government planners to identify the parcels that count towards “Open Space Preservation”
- Users can view and download the maps and supporting information necessary for their CRS application
- The app also allows users to look-up individual contributing parcels
- Assists with identifying future open space in the floodplain

Questions?
