

APPENDIX A:

**MAPS FOR CONTRACT #5 -
HISTORIC COROLLA PARK AND WHALEHEAD
SUBDIVISION AREA**

MARLIN WALKWAY



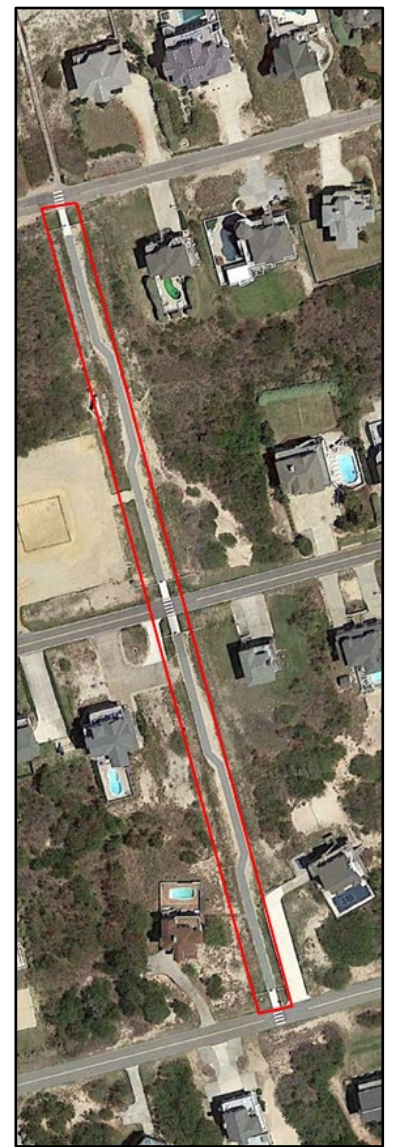
CORAL WALKWAY



BARRACUDA WALKWAY



HERRING WALKWAY



TOWARD NC 12



MACKERAL WALKWAY



SAILFISH WALKWAY



TUNA WALKWAY



PERCH WALKWAY



TOWARD NC 12



STURGEON WALKWAY



ALBACORE STREET SIDEWALK EXTENSION



SHAD STREET SIDEWALK EXTENSION



BONITO STREET PUBLIC PARKING LOT



SAILFISH STREET PUBLIC PARKING LOT



SHAD STREET PUBLIC PARKING LOT



STRUGEON STREET PUBLIC PARKING LOT



VILLAGE BOAT SHED – 1114 COROLLA VILLAGE ROAD



HISTORIC COROLLA PARK

