

LEGEND AND PLANT LIST					
QTY.	COMMON NAME	BOTANICAL NAME	SIZE/COND.	SPACING	REMARKS
8	Crape Myrtle	Lagerstroemia indica	15 Gal. Cont., 6-7' Ht.	50' O.C.	Tuscarora
37	Loblolly Pine	Pinus taeda	15 Gal. Cont., 6-8' Ht.	10' O.C.	Staggered Rows

NOTES

ALL PLANTS SHALL MEET MINIMUM STANDARDS OUTLINED IN THE AMERICAN STANDARDS FOR NURSERY STOCK (LATEST EDITION) PUBLISHED BY THE AMERICAN ASSOCIATION OF NURSERYMEN, INC.

PLANTS SHALL BE SOUND, HEALTHY AND VIGOROUS, BE WELL BRANCHED AND DENSELY FOLIATED WHEN IN LEAF. PLANTS SHALL BE FREE OF DISEASE, PESTS, EGGS/LARVAE AND THEY SHALL BE FREE OF DAMAGE. DAMAGE INCLUDES, BUT IS NOT LIMITED TO SCRAPES ON THE BARK OR EVIDENCE OF CRACKING FROM WIRE OR OTHER STAKING/BINDING MATERIAL.

CONTAINER PLANTS SHALL BE FREE OF SEVERE ROOT BOUND CONDITIONS. CONTRACTOR TO LIGHTLY SCAMP/LOOSEN OUTER ROOTS AT TIME OF PLANTING.

ALL PLANTS SHALL BE PURCHASED FROM BONA-FIDE WHOLESALE NURSERIES AND/OR GROWERS.

PLANTS SHALL BE COVERED BY TWP OR WITHIN ENCLOSED TRUCK DURING TRANSPORT TO SITE.

SUBSTITUTIONS SHALL BE APPROVED BY THE OWNER OR THEIR DESIGNATED REPRESENTATIVE.

DESIGNATED MULCH AREAS TO BE MULCHED WITH A 4" DEPTH OF CLEAN, UN-OYED, TRIPLE SCREENED HARDWOOD MULCH.

PLANT QUANTITIES SHOWN IN PLANTING LIST IS FOR CONTRACTOR CONFORMANCE ONLY. IT IS THE CONTRACTOR'S RESPONSIBILITY TO OBTAIN QUANTITIES BASED ON PLANTS SHOWN ON THE DRAWINGS.

ANY EXISTING TREES AND PHYSICAL IMPROVEMENTS ARE SHOWN FOR REFERENCE ONLY. ADDITIONAL TREES/IMPROVEMENTS NOT SHOWN MAY EXIST ON SITE.

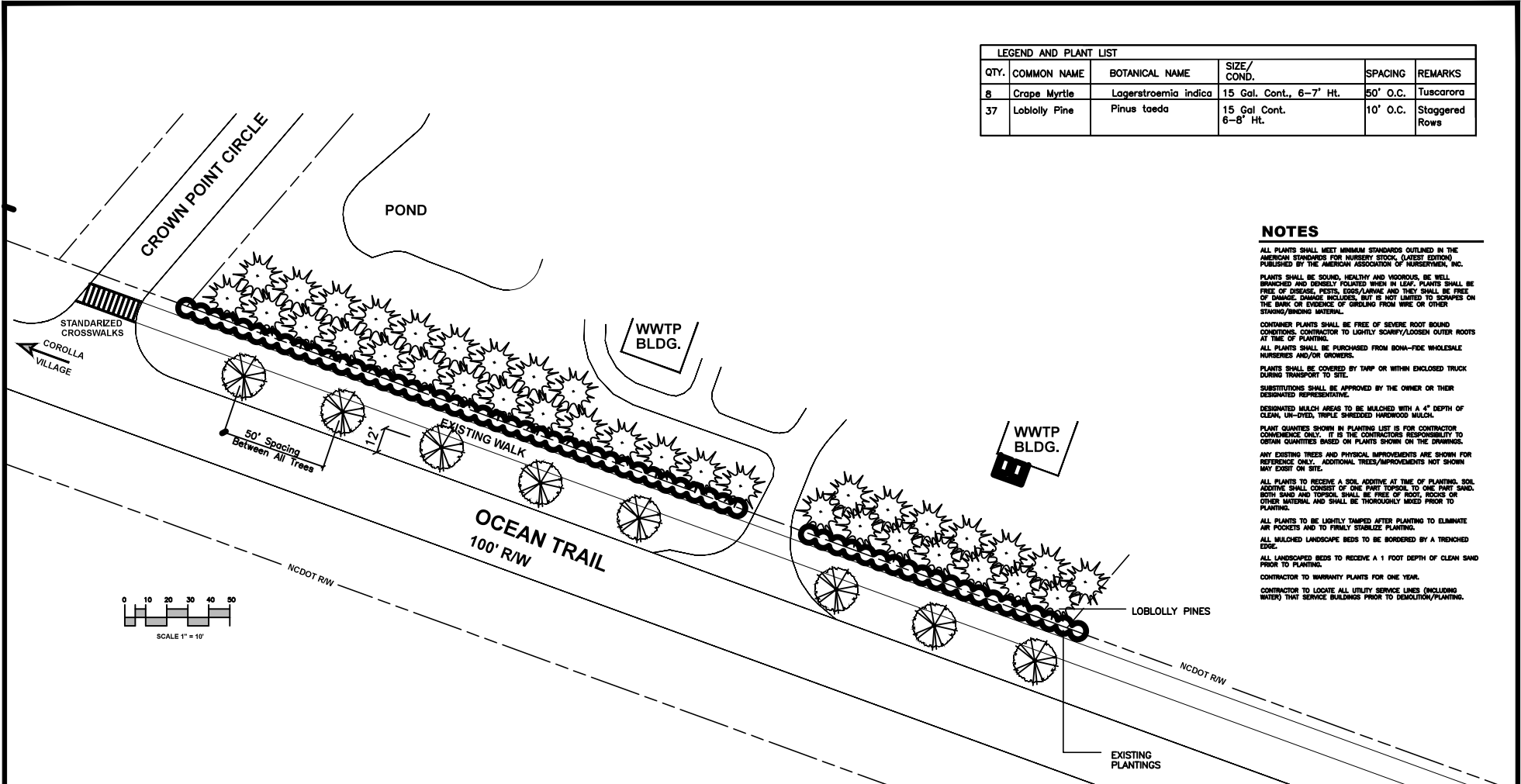
ALL PLANTS TO RECEIVE A SOIL ADDITIVE AT TIME OF PLANTING. SOIL ADDITIVE SHALL CONSIST OF ONE PART TOPSOIL TO ONE PART SAND. BOTH SAND AND TOPSOIL SHALL BE FREE OF ROOT, ROCKS OR OTHER MATERIAL AND SHALL BE THOROUGHLY MIXED PRIOR TO PLANTING.

ALL PLANTS TO BE LIGHTLY DAMPED AFTER PLANTING TO ELIMINATE AIR POCKETS AND TO PROMPTLY STABILIZE PLANTING.

ALL LANDSCAPED BEDS TO RECEIVE A 1 FOOT DEPTH OF CLEAN SAND PRIOR TO PLANTING.

CONTRACTOR TO WARRANTY PLANTS FOR ONE YEAR.

CONTRACTOR TO LOCATE ALL UTILITY SERVICE LINES (INCLUDING WATER) THAT SERVICE BUILDINGS PRIOR TO DEMOLITION/PLANTING.



Crown Point

ISSUED FOR BID

LAUGHING GULL DESIGN STUDIO
 LANDSCAPE ARCHITECTURE • LAND PLANNING • ENVIRONMENTAL CONSULTING
 KITY HAWK, NORTH CAROLINA 27949
 PHONE (252) 281-8747

Greenspace

Landscape Planning & Design

3400 Road, NC 27599
 252.727.0434

811

Know what's below.
 Call before you dig.



Corolla Beautification Project
 Currituck County, North Carolina
 October 1, 2017