

NOTES

ALL PLANTS SHALL MEET MINIMUM STANDARDS OUTLINED IN THE AMERICAN STANDARDS FOR NURSERY STOCK, (LATEST EDITION) PUBLISHED BY THE AMERICAN ASSOCIATION OF NURSEMEN, INC.

PLANTS SHALL BE SOUND, HEALTHY AND VIGOROUS, BE WELL BRANCHED AND DENSELY FOLIATED WHEN IN LEAF. PLANTS SHALL BE FREE OF DISEASE, PESTS, EGGS/LARVAE AND THEY SHALL BE FREE OF DAMAGE. DAMAGE INCLUDES, BUT IS NOT LIMITED TO SCRAPES ON THE BARK OR EVIDENCE OF GIRDLING FROM WIRE OR OTHER STAKING/BINDING MATERIAL.

CONTAINER PLANTS SHALL BE FREE OF SEVERE ROOT BOUND CONDITIONS. CONTRACTOR TO LIGHTLY SCRAPE/LOOSEN OUTER ROOTS AT TIME OF PLANTING. ALL PLANTS SHALL BE PURCHASED FROM BONA-FIDE WHOLESALE NURSERIES AND/OR GROWERS.

PLANTS SHALL BE COVERED BY TARP OR WITHIN ENCLOSED TRUCK DURING TRANSPORT TO SITE.

SUBSTITUTIONS SHALL BE APPROVED BY THE OWNER OR THEIR DESIGNATED REPRESENTATIVE.

DESIGNATED MULCH AREAS TO BE MULCHED WITH A 4" DEPTH OF CLEAN, UN-DYED, TRIPLE SHREDED HARDWOOD MULCH.

PLANT QUANTITIES SHOWN IN PLANTING LIST IS FOR CONTRACTOR CONVENIENCE ONLY. IT IS THE CONTRACTORS RESPONSIBILITY TO OBTAIN QUANTITIES BASED ON PLANTS SHOWN ON THE DRAWINGS.

ANY EXISTING TREES AND PHYSICAL IMPROVEMENTS ARE SHOWN FOR REFERENCE ONLY. ADDITIONAL TREES/IMPROVEMENTS NOT SHOWN MAY EXIST ON SITE.

ALL PLANTS TO RECEIVE A SOIL ADDITIVE AT TIME OF PLANTING. SOIL ADDITIVE SHALL CONSIST OF ONE PART TOPSOIL TO ONE PART SAND. BOTH SAND AND TOPSOIL SHALL BE FREE OF ROOT, ROCKS OR OTHER MATERIAL AND SHALL BE THOROUGHLY MIXED PRIOR TO PLANTING.

ALL PLANTS TO BE LIGHTLY TAMPED AFTER PLANTING TO ELIMINATE AIR POCKETS AND TO FIRMLY STABILIZE PLANTING.

ALL MULCHED LANDSCAPE BEDS TO BE BORDERED BY A TRENCHED EDGE.

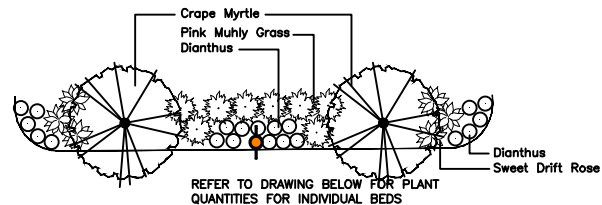
ALL LANDSCAPED BEDS TO RECEIVE A 1 FOOT DEPTH OF CLEAN SAND PRIOR TO PLANTING.

CONTRACTOR TO WARRANTY PLANTS FOR ONE YEAR.

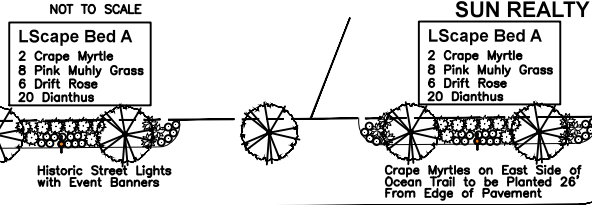
CONTRACTOR TO LOCATE ALL UTILITY SERVICE LINES (INCLUDING WATER) THAT SERVICE BUILDINGS PRIOR TO DEMOLITION/PLANTING.

LEGEND AND PLANT LIST

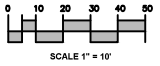
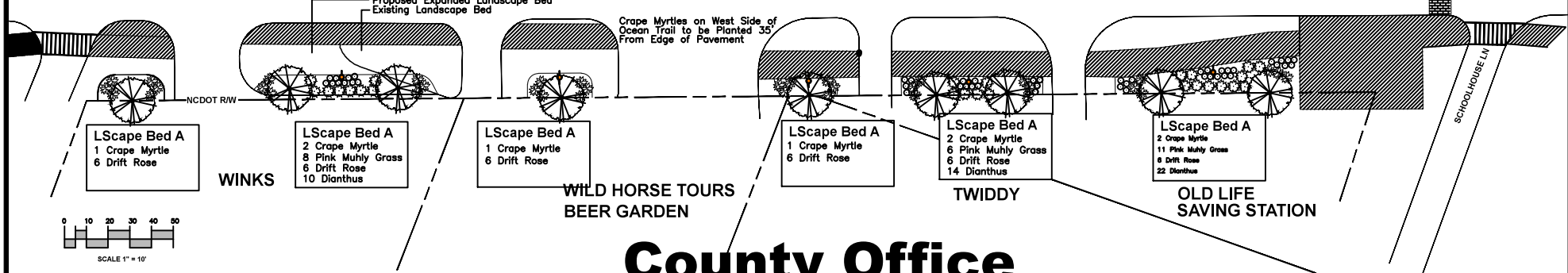
QTY.	COMMON NAME	BOTANICAL NAME	SIZE/ COND.	SPACING	REMARKS
18	Crape Myrtle	Lagerstroemia indica	15 Gal. Cont., 6-9" H.C.	6-9" H.C.	Catawba
67	Pink Muhly Grass	Muhlenbergia capilaris	3 Gal. Cont.	3' O.C.	Full/Well Branched
60	Sweet Drift Rose	Rosa 'meiswestdom'	3 Gal. Cont.	4' O.C.	Pink Flowers
139	Dianthus 'Pinball Wizard'	Rosa 'Pinball Wizard/Devon'	Coil/Edge Cont.	2' O.C.	Full/Well Branched



TYPICAL LANDSCAPE ISLAND



OCEAN TRAIL 100' R/W



County Office

ISSUED FOR BID

LAUGHING GULL DESIGN STUDIO
LANDSCAPE ARCHITECTURE • LANDPLANNING • ENVIRONMENTAL CONSULTING
KITTY HAWK, NORTH CAROLINA 27949
PHONE (252) 281-8747

Greenspace Landscape Planning & Design
Nags Head, NC 27959
252.757.6836

811
Know what's below.
Call before you dig.

Currituck

Corolla Beautification Project
Currituck County, North Carolina
October 1, 2017

DWG CBP 7