



Path: E:\Projects\USA\NC\Currituck\2024\Currituck_Shorelines_2024.aprx

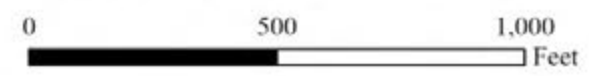
NOTES

- 1) Coordinates are in feet based on the North Carolina State Plane Coordinate System, North American Datum of 1983 (NAD83).
- 2) Aerial imagery taken on August 5, 2020 and provided by NOAA.
- 3) Shoreline position based on data collected in June 2024 by Coastal Protection Engineering of North Carolina, Inc.
- 4) Building footprint data is from the North Carolina Floodplain Mapping Program.

LEGEND

- +4.0 Ft. NAVD88 Contour (June 2024)
- Projected Shoreline Change (2024 Conditions)
 - +10 Years
 - +20 Years
 - +30 Years

- ▲ Profile Stations
- - Baseline
- Beach Profile Transects
- - Section Area Boundary



TITLE Impacted Structure and Projected Shoreline Maps
 2024 Beach Monitoring and Stability Assessment
 Currituck County, NC

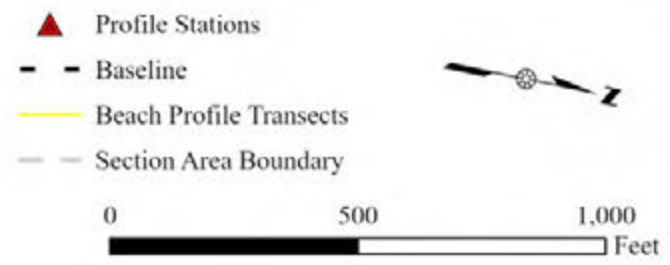
COASTAL PROTECTION ENGINEERING
 OF NORTH CAROLINA, INC.
 4038 Masonboro Loop Road
 Wilmington, NC 28409
 PH (910) 399-1905



Path: E:\Projects\USA\NC\Currituck\2024\020\020_Currituck_Aerial\Map\Currituck_Shoreline_2024.aprx

- NOTES**
- Coordinates are in feet based on the North Carolina State Plane Coordinate System, North American Datum of 1983 (NAD83).
 - Aerial imagery taken on August 5, 2020 and provided by NOAA.
 - Shoreline position based on data collected in June 2024 by Coastal Protection Engineering of North Carolina, Inc.
 - Building footprint data is from the North Carolina Floodplain Mapping Program.

- LEGEND**
- +4.0 Ft. NAVD88 Contour (June 2024)
 - Projected Shoreline Change (2024 Conditions)
 - +10 Years
 - +20 Years
 - +30 Years



TITLE Impacted Structure and Projected Shoreline Maps
2024 Beach Monitoring and Stability Assessment
Currituck County, NC

COASTAL PROTECTION ENGINEERING
OF NORTH CAROLINA, INC.
4038 Masonboro Loop Road
Wilmington, NC 28409
PH (910) 399-1905

Date: 3/19/2025 By: SL Page 2 of 23



Path: E:\Projects\USA\NC\Currituck\2024\Currituck_Shoreline_2024.aprx

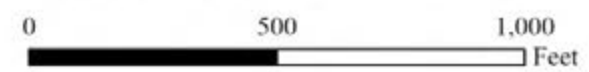
NOTES

- 1) Coordinates are in feet based on the North Carolina State Plane Coordinate System, North American Datum of 1983 (NAD83).
- 2) Aerial imagery taken on August 5, 2020 and provided by NOAA.
- 3) Shoreline position based on data collected in June 2024 by Coastal Protection Engineering of North Carolina, Inc.
- 4) Building footprint data is from the North Carolina Floodplain Mapping Program.

LEGEND

- +4.0 Ft. NAVD88 Contour (June 2024)
- — Projected Shoreline Change (2024 Conditions)
 - +10 Years
 - +20 Years
 - +30 Years

- ▲ Profile Stations
- - Baseline
- Beach Profile Transects
- - Section Area Boundary



TITLE
 Impacted Structure
 and Projected Shoreline Maps
 2024 Beach Monitoring and Stability Assessment
 Currituck County, NC

COASTAL PROTECTION ENGINEERING
 OF NORTH CAROLINA, INC.
 4038 Masonboro Loop Road
 Wilmington, NC 28409
 PH (910) 399-1905

Date: 3/19/2025 By: SL Page 3 of 23



Path: E:\Projects\USA\NC\Currituck\2020\20 Currituck\Aerial\Currituck_Shoreline_2024\Currituck_Shoreline_2024.aprx

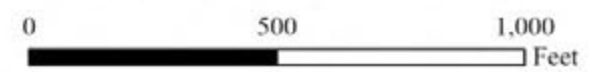
NOTES

- 1) Coordinates are in feet based on the North Carolina State Plane Coordinate System, North American Datum of 1983 (NAD83).
- 2) Aerial imagery taken on August 5, 2020 and provided by NOAA.
- 3) Shoreline position based on data collected in June 2024 by Coastal Protection Engineering of North Carolina, Inc.
- 4) Building footprint data is from the North Carolina Floodplain Mapping Program.

LEGEND

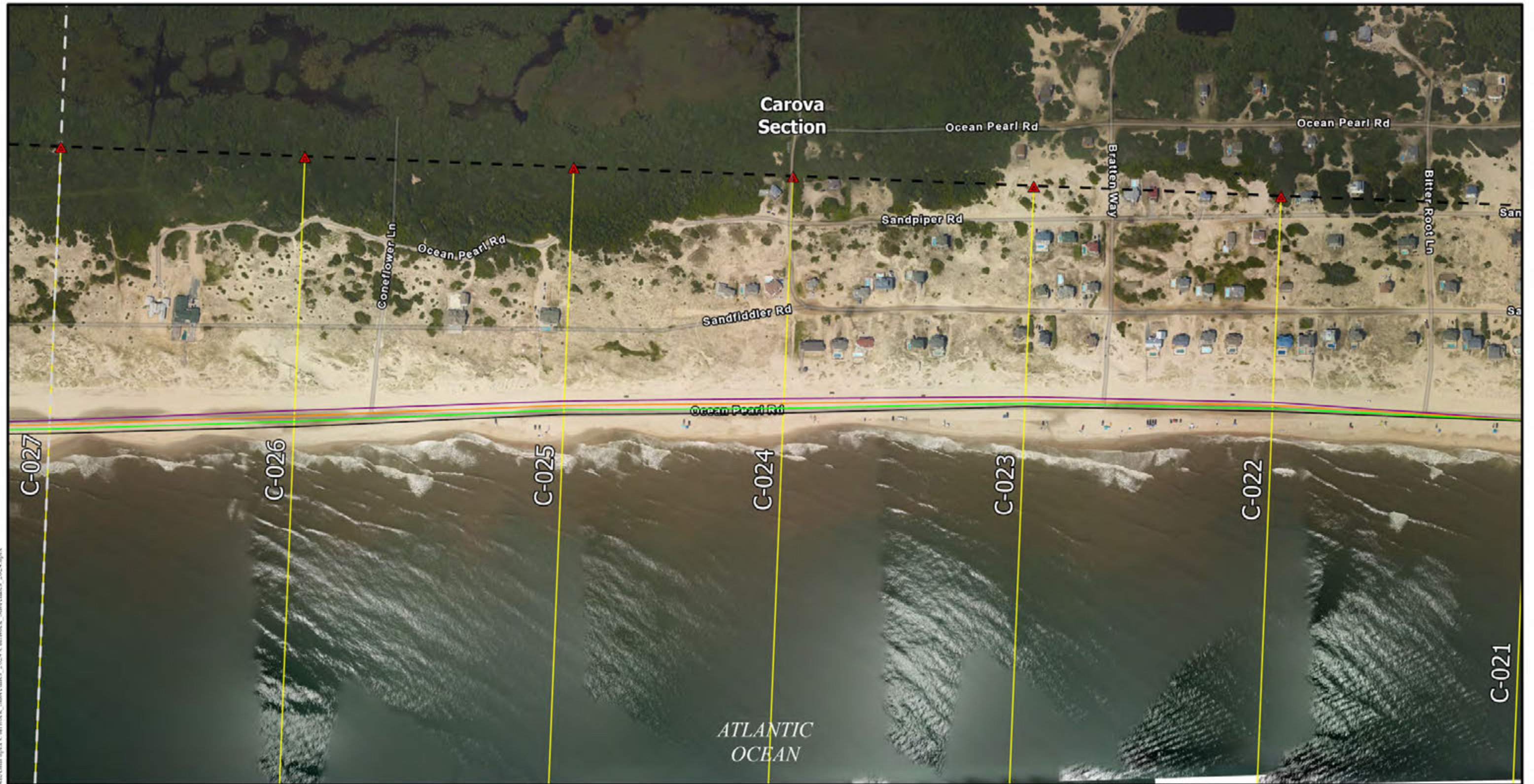
- +4.0 Ft. NAVD88 Contour (June 2024)
- Projected Shoreline Change (2024 Conditions)**
- +10 Years
- +20 Years
- +30 Years

- Profile Stations
- Baseline
- Beach Profile Transects
- Section Area Boundary



TITLE
Impacted Structure and Projected Shoreline Maps
 2024 Beach Monitoring and Stability Assessment
 Currituck County, NC

COASTAL PROTECTION ENGINEERING OF NORTH CAROLINA, INC.
 4038 Masonboro Loop Road
 Wilmington, NC 28409
 PH (910) 399-1905



NOTES

- Coordinates are in feet based on the North Carolina State Plane Coordinate System, North American Datum of 1983 (NAD83).
- Aerial imagery taken on August 5, 2020 and provided by NOAA.
- Shoreline position based on data collected in June 2024 by Coastal Protection Engineering of North Carolina, Inc.
- Building footprint data is from the North Carolina Floodplain Mapping Program.

LEGEND

- +4.0 Ft. NAVD88 Contour (June 2024)
- Projected Shoreline Change (2024 Conditions)
 - +10 Years
 - +20 Years
 - +30 Years

- ▲ Profile Stations
- - Baseline
- Beach Profile Transects
- - Section Area Boundary

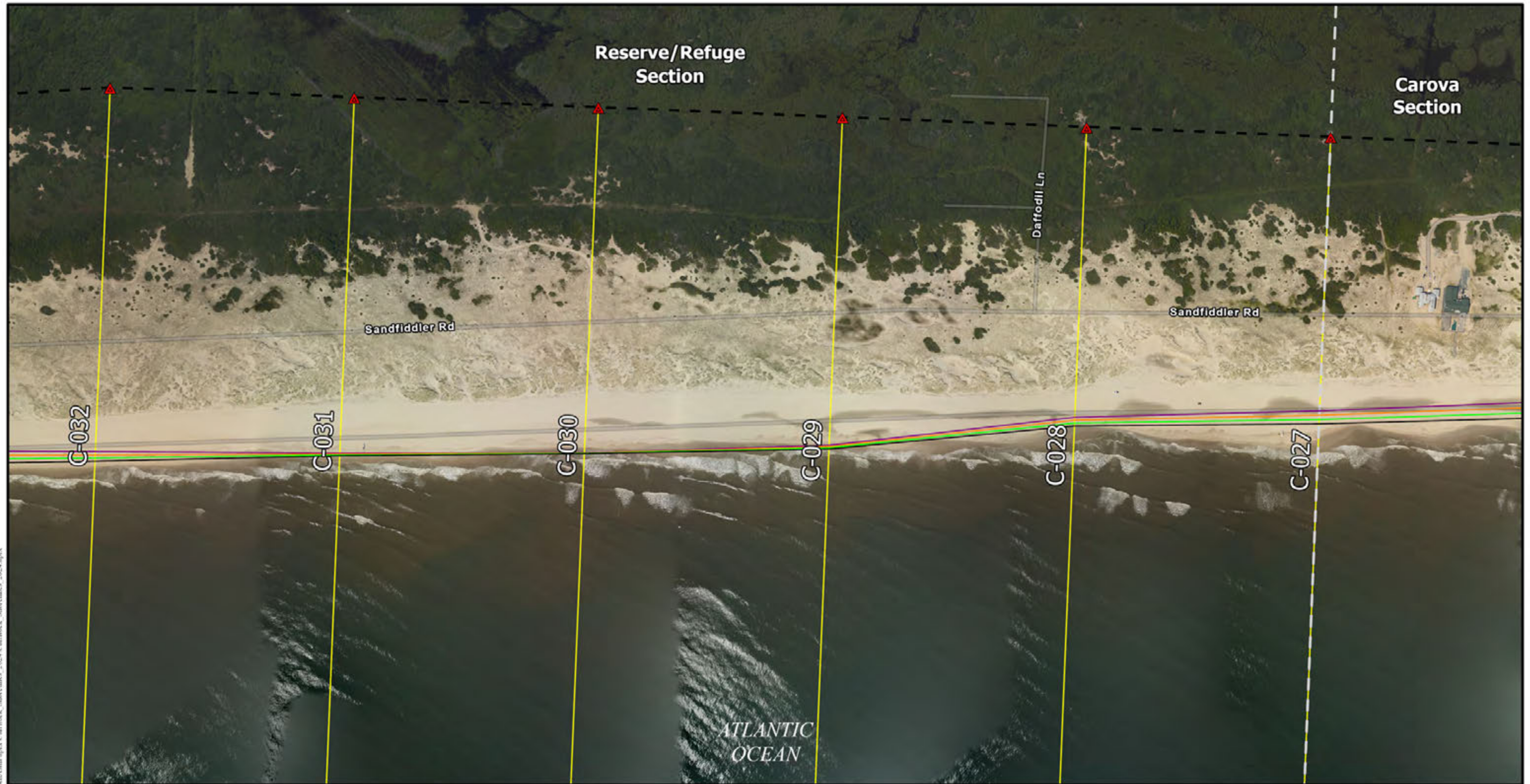
0 500 1,000 Feet

TITLE Impacted Structure and Projected Shoreline Maps
2024 Beach Monitoring and Stability Assessment
Currituck County, NC

COASTAL PROTECTION ENGINEERING
OF NORTH CAROLINA, INC.
4038 Masonboro Loop Road
Wilmington, NC 28409
PH (910) 399-1905

Date: 3/19/2025 By: SL Page 5 of 23

Path: E:\Projects\USA\NC\Currituck\2024\Map\aprx\Currituck_Shoreline_2024.aprx



Path: E:\Projects\USA\NC\Currituck\2024\Currituck_Shorelines_2024.aprx

- NOTES**
- Coordinates are in feet based on the North Carolina State Plane Coordinate System, North American Datum of 1983 (NAD83).
 - Aerial imagery taken on August 5, 2020 and provided by NOAA.
 - Shoreline position based on data collected in June 2024 by Coastal Protection Engineering of North Carolina, Inc.
 - Building footprint data is from the North Carolina Floodplain Mapping Program.

- LEGEND**
- +4.0 Ft. NAVD88 Contour (June 2024)
 - Projected Shoreline Change (2024 Conditions)
 - +10 Years
 - +20 Years
 - +30 Years

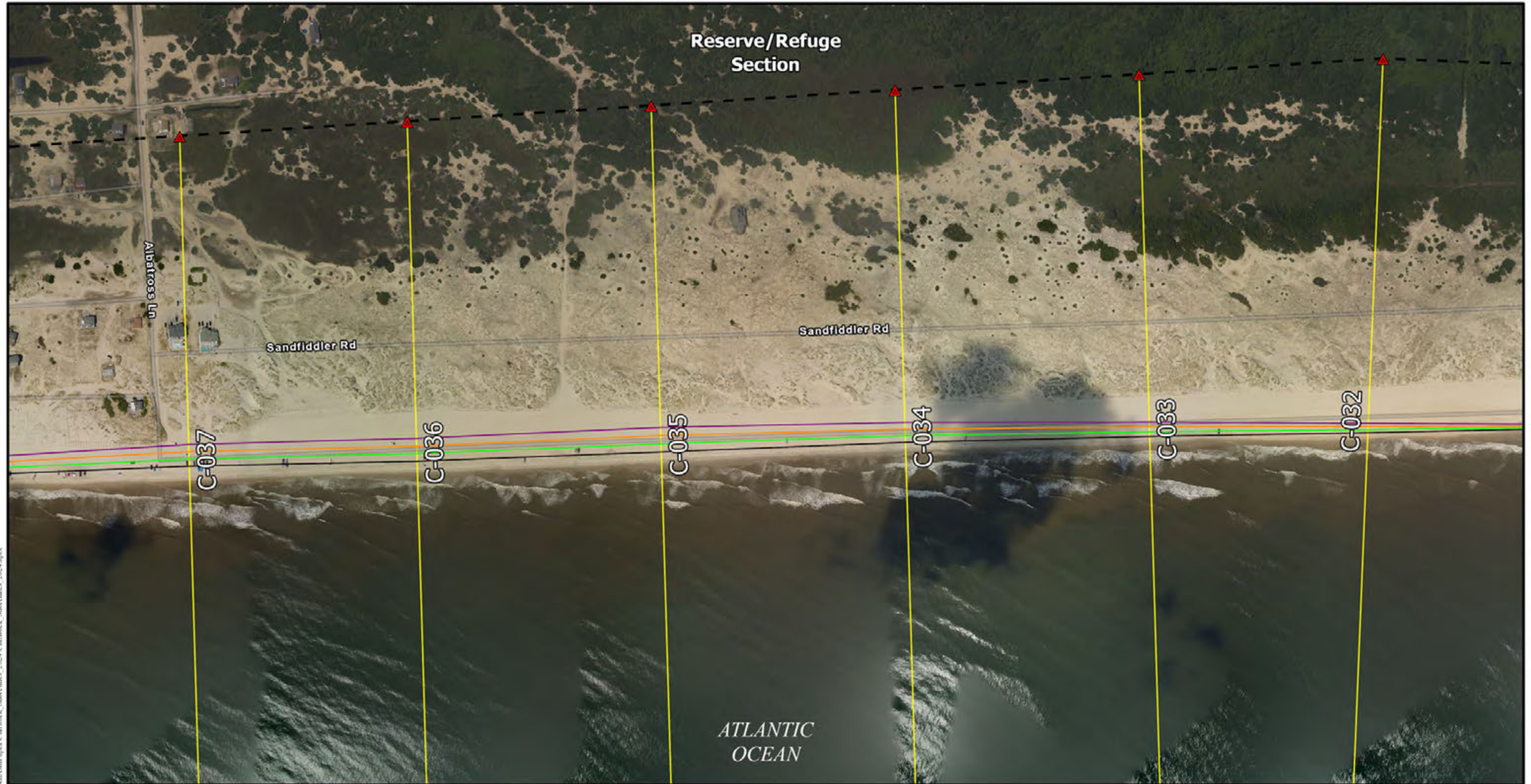
- ▲ Profile Stations
- - Baseline
- Beach Profile Transects
- - Section Area Boundary

0 500 1,000 Feet

TITLE Impacted Structure and Projected Shoreline Maps
2024 Beach Monitoring and Stability Assessment
Currituck County, NC

COASTAL PROTECTION ENGINEERING
OF NORTH CAROLINA, INC.
4038 Masonboro Loop Road
Wilmington, NC 28409
PH (910) 399-1905

Date: 3/19/2025 By: SL Page 6 of 23



NOTES

- Coordinates are in feet based on the North Carolina State Plane Coordinate System, North American Datum of 1983 (NAD83).
- Aerial imagery taken on August 5, 2020 and provided by NOAA.
- Shoreline position based on data collected in June 2024 by Coastal Protection Engineering of North Carolina, Inc.
- Building footprint data is from the North Carolina Floodplain Mapping Program.

LEGEND

- +4.0 Ft. NAVD88 Contour (June 2024)
- Projected Shoreline Change (2024 Conditions)
 - +10 Years
 - +20 Years
 - +30 Years

- ▲ Profile Stations
- - Baseline
- Beach Profile Transects
- - Section Area Boundary

0 500 1,000 Feet

TITLE Impacted Structure and Projected Shoreline Maps
2024 Beach Monitoring and Stability Assessment
Currituck County, NC

COASTAL PROTECTION ENGINEERING
OF NORTH CAROLINA, INC.
4038 Masonboro Loop Road
Wilmington, NC 28409
PH (910) 399-1905

Date: 3/19/2025 By: SL Page 7 of 23

Path: E:\Projects\USA\NC\Currituck\2024\Currituck_Shorelines_2024.aprx



Path: E:\Projects\USA\NC\Currituck\2024\020\Currituck_Shortlines_2024.aprx

NOTES

- 1) Coordinates are in feet based on the North Carolina State Plane Coordinate System, North American Datum of 1983 (NAD83).
- 2) Aerial imagery taken on August 5, 2020 and provided by NOAA.
- 3) Shoreline position based on data collected in June 2024 by Coastal Protection Engineering of North Carolina, Inc.
- 4) Building footprint data is from the North Carolina Floodplain Mapping Program.

LEGEND

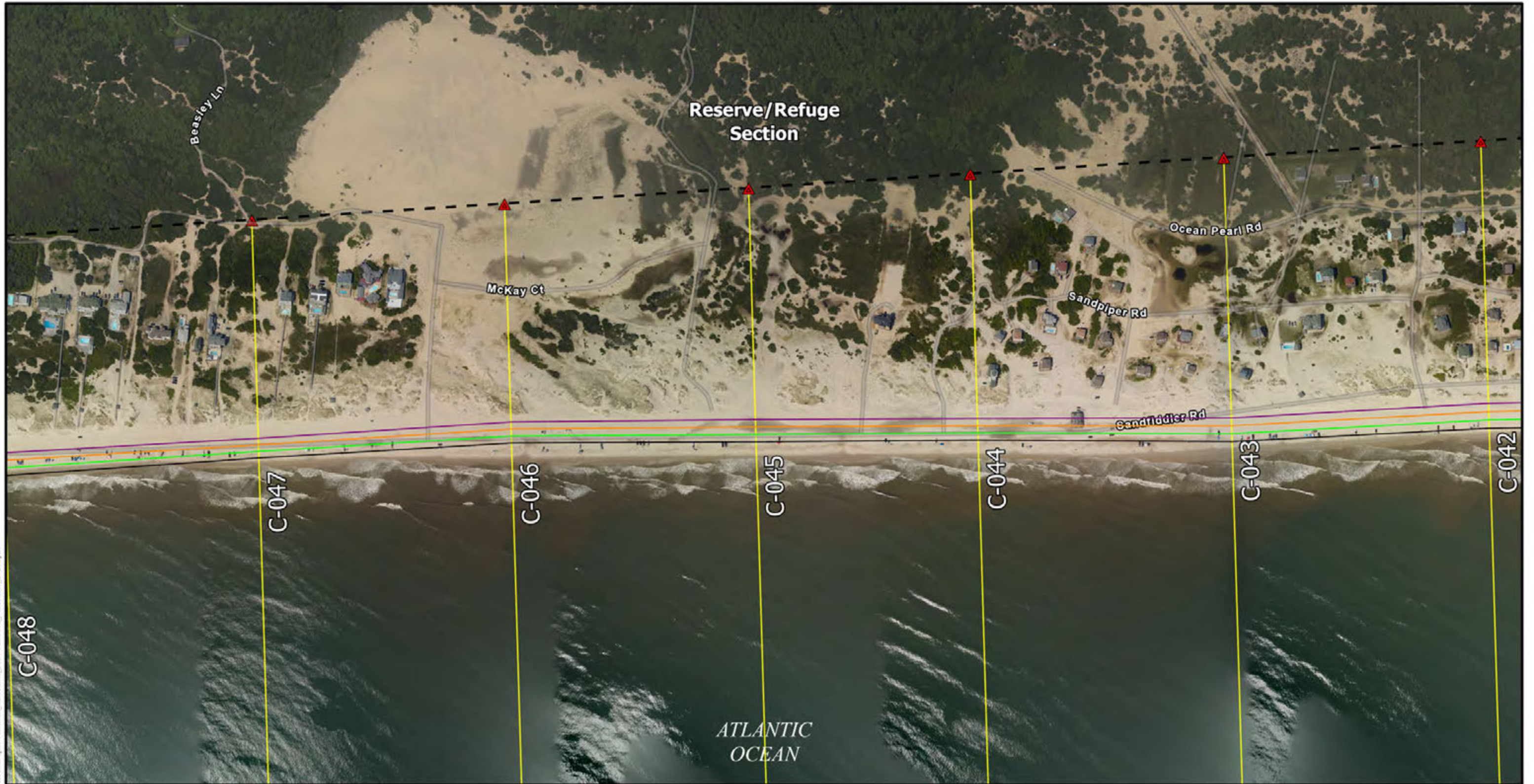
- +4.0 Ft. NAVD88 Contour (June 2024)
- Projected Shoreline Change (2024 Conditions)
 - +10 Years
 - +20 Years
 - +30 Years

- ▲ Profile Stations
- - Baseline
- Beach Profile Transects
- - Section Area Boundary



TITLE
 Impacted Structure
 and Projected Shoreline Maps
 2024 Beach Monitoring and Stability Assessment
 Currituck County, NC

COASTAL PROTECTION ENGINEERING
 OF NORTH CAROLINA, INC.
 4038 Masonboro Loop Road
 Wilmington, NC 28409
 PH (910) 399-1905



Path: E:\Projects\USA\NC\Currituck\2024\Currituck_Shortlines_2024.aprx

- NOTES**
- Coordinates are in feet based on the North Carolina State Plane Coordinate System, North American Datum of 1983 (NAD83).
 - Aerial imagery taken on August 5, 2020 and provided by NOAA.
 - Shoreline position based on data collected in June 2024 by Coastal Protection Engineering of North Carolina, Inc.
 - Building footprint data is from the North Carolina Floodplain Mapping Program.

- LEGEND**
- +4.0 Ft. NAVD88 Contour (June 2024)
 - Projected Shoreline Change (2024 Conditions)
 - +10 Years
 - +20 Years
 - +30 Years

- ▲ Profile Stations
- - Baseline
- Beach Profile Transects
- - Section Area Boundary

TITLE Impacted Structure and Projected Shoreline Maps
2024 Beach Monitoring and Stability Assessment
Currituck County, NC

COASTAL PROTECTION ENGINEERING
OF NORTH CAROLINA, INC.
4038 Masonboro Loop Road
Wilmington, NC 28409
PH (910) 399-1905

Date: 3/19/2025 By: SL Page 9 of 23



Path: E:\Projects\USA\NC\Currituck\2024\Currituck_Shortlines_2024.aprx

NOTES

- 1) Coordinates are in feet based on the North Carolina State Plane Coordinate System, North American Datum of 1983 (NAD83).
- 2) Aerial imagery taken on August 5, 2020 and provided by NOAA.
- 3) Shoreline position based on data collected in June 2024 by Coastal Protection Engineering of North Carolina, Inc.
- 4) Building footprint data is from the North Carolina Floodplain Mapping Program.

LEGEND

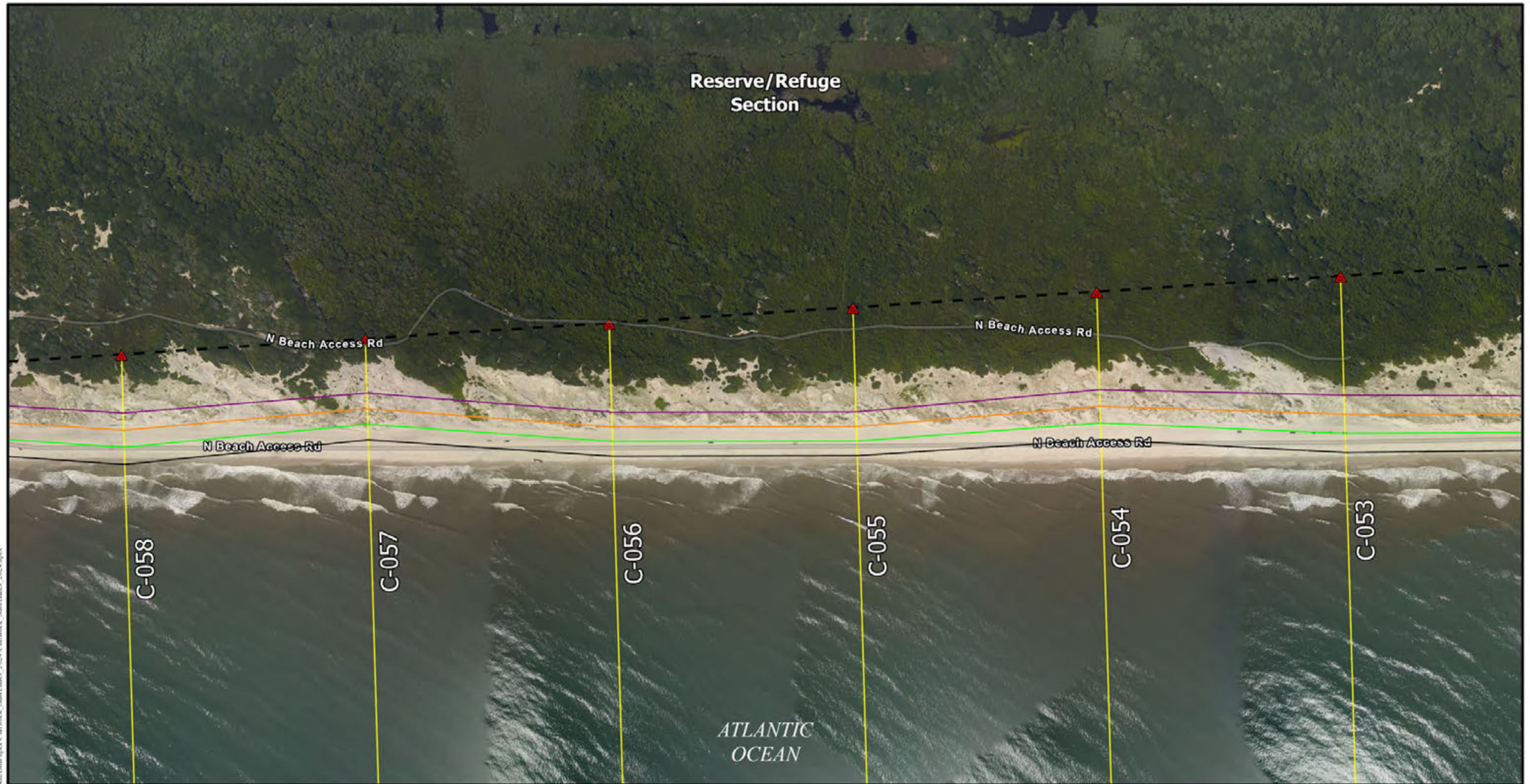
- +4.0 Ft. NAVD88 Contour (June 2024)
- Projected Shoreline Change (2024 Conditions)
 - +10 Years
 - +20 Years
 - +30 Years

- ▲ Profile Stations
- - Baseline
- Beach Profile Transects
- - Section Area Boundary



TITLE
 Impacted Structure
 and Projected Shoreline Maps
 2024 Beach Monitoring and Stability Assessment
 Currituck County, NC

COASTAL PROTECTION ENGINEERING
 OF NORTH CAROLINA, INC.
 4038 Masonboro Loop Road
 Wilmington, NC 28409
 PH (910) 399-1905



NOTES

- Coordinates are in feet based on the North Carolina State Plane Coordinate System, North American Datum of 1983 (NAD83).
- Aerial imagery taken on August 5, 2020 and provided by NOAA.
- Shoreline position based on data collected in June 2024 by Coastal Protection Engineering of North Carolina, Inc.
- Building footprint data is from the North Carolina Floodplain Mapping Program.

LEGEND

- +4.0 Ft. NAVD88 Contour (June 2024)
- Projected Shoreline Change (2024 Conditions)
 - +10 Years
 - +20 Years
 - +30 Years

- ▲ Profile Stations
- - Baseline
- Beach Profile Transects
- - Section Area Boundary

0 500 1,000 Feet

TITLE Impacted Structure and Projected Shoreline Maps
2024 Beach Monitoring and Stability Assessment
Currituck County, NC

COASTAL PROTECTION ENGINEERING
OF NORTH CAROLINA, INC.
4038 Masonboro Loop Road
Wilmington, NC 28409
PH (910) 399-1905

Date: 3/19/2025 By: SL Page 11 of 23

Path: E:\Projects\USA\NC\Currituck\2024\020\Currituck_Shorelines_2024.aprx



Path: E:\Projects\USA\NC\Currituck\2024\Currituck_Shorelines_2024.aprx

- NOTES**
- Coordinates are in feet based on the North Carolina State Plane Coordinate System, North American Datum of 1983 (NAD83).
 - Aerial imagery taken on August 5, 2020 and provided by NOAA.
 - Shoreline position based on data collected in June 2024 by Coastal Protection Engineering of North Carolina, Inc.
 - Building footprint data is from the North Carolina Floodplain Mapping Program.

- LEGEND**
- +4.0 Ft. NAVD88 Contour (June 2024)
 - Projected Shoreline Change (2024 Conditions)
 - +10 Years
 - +20 Years
 - +30 Years

- ▲ Profile Stations
- - Baseline
- Beach Profile Transects
- - Section Area Boundary

TITLE Impacted Structure and Projected Shoreline Maps
2024 Beach Monitoring and Stability Assessment
Currituck County, NC

COASTAL PROTECTION ENGINEERING
OF NORTH CAROLINA, INC.
4038 Masonboro Loop Road
Wilmington, NC 28409
PH (910) 399-1905

Date: 3/19/2025 By: SL Page 12 of 23



Path: E:\Projects\USA\NC\Currituck\2024\020\020_Currituck\Aerial\aprx\Currituck_Shoreline_2024.aprx

- NOTES**
- Coordinates are in feet based on the North Carolina State Plane Coordinate System, North American Datum of 1983 (NAD83).
 - Aerial imagery taken on August 5, 2020 and provided by NOAA.
 - Shoreline position based on data collected in June 2024 by Coastal Protection Engineering of North Carolina, Inc.
 - Building footprint data is from the North Carolina Floodplain Mapping Program.

- LEGEND**
- +4.0 Ft. NAVD88 Contour (June 2024)
 - Projected Shoreline Change (2024 Conditions)
 - +10 Years
 - +20 Years
 - +30 Years

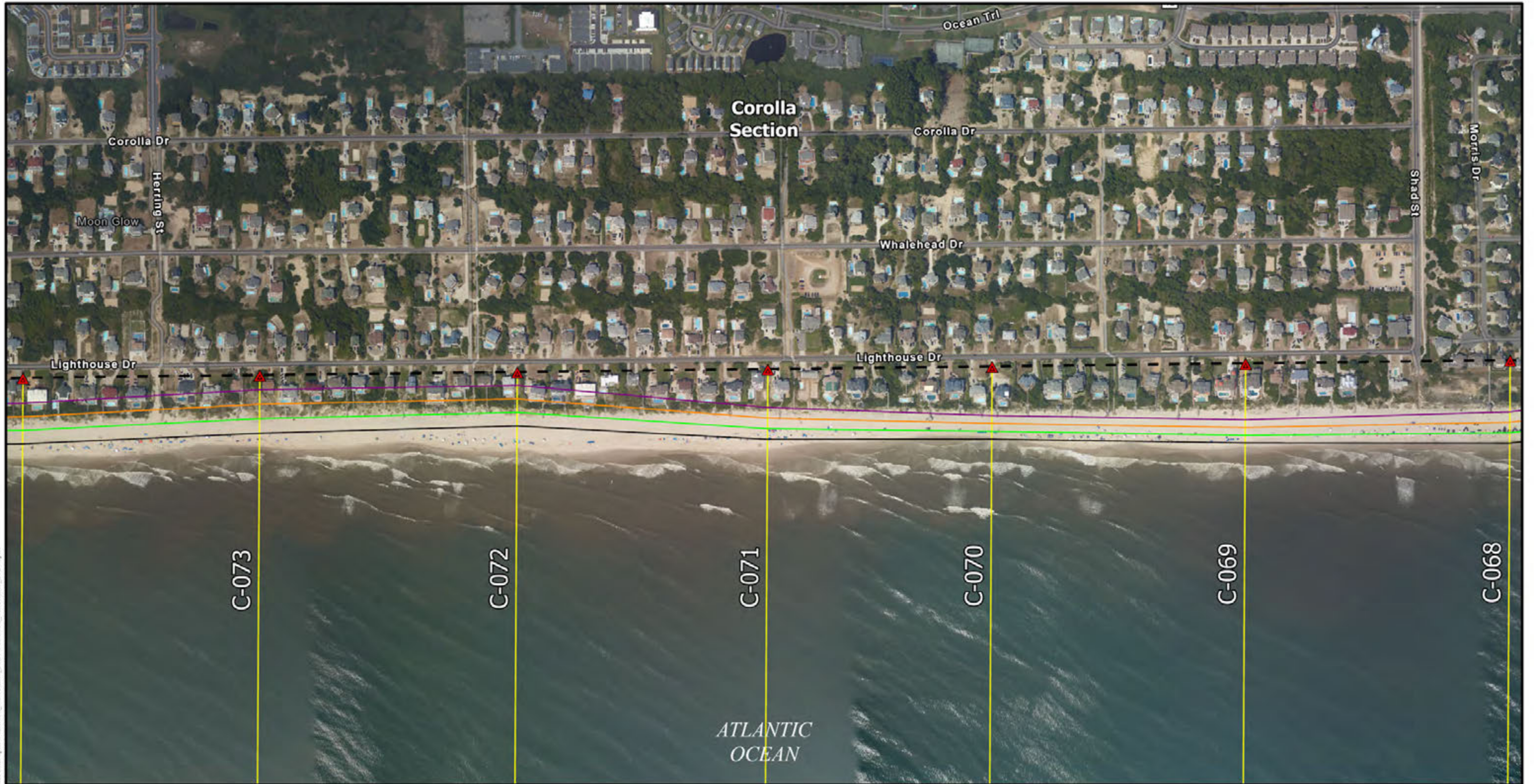
- ▲ Profile Stations
- - Baseline
- Beach Profile Transects
- - Section Area Boundary

0 500 1,000 Feet

TITLE Impacted Structure and Projected Shoreline Maps
2024 Beach Monitoring and Stability Assessment
Currituck County, NC

COASTAL PROTECTION ENGINEERING
OF NORTH CAROLINA, INC.
4038 Masonboro Loop Road
Wilmington, NC 28409
PH (910) 399-1905

Date: 3/19/2025 By: SL Page 13 of 23



Path: E:\Projects\USA\NC\Currituck\2024\Currituck_Shorelines_2024.aprx

NOTES

- 1) Coordinates are in feet based on the North Carolina State Plane Coordinate System, North American Datum of 1983 (NAD83).
- 2) Aerial imagery taken on August 5, 2020 and provided by NOAA.
- 3) Shoreline position based on data collected in June 2024 by Coastal Protection Engineering of North Carolina, Inc.
- 4) Building footprint data is from the North Carolina Floodplain Mapping Program.

LEGEND

- +4.0 Ft. NAVD88 Contour (June 2024)
- Projected Shoreline Change (2024 Conditions)**
- +10 Years
- +20 Years
- +30 Years

- ▲ Profile Stations
- - Baseline
- Beach Profile Transects
- - Section Area Boundary



TITLE
Impacted Structure and Projected Shoreline Maps
 2024 Beach Monitoring and Stability Assessment
 Currituck County, NC

COASTAL PROTECTION ENGINEERING OF NORTH CAROLINA, INC.
 4038 Masonboro Loop Road
 Wilmington, NC 28409
 PH (910) 399-1905



Path: E:\Projects\USA\NC\Currituck\2024\20240209_Currituck\Amf\aprx\Currituck_Shoreline_2024.aprx

NOTES

- 1) Coordinates are in feet based on the North Carolina State Plane Coordinate System, North American Datum of 1983 (NAD83).
- 2) Aerial imagery taken on August 5, 2020 and provided by NOAA.
- 3) Shoreline position based on data collected in June 2024 by Coastal Protection Engineering of North Carolina, Inc.
- 4) Building footprint data is from the North Carolina Floodplain Mapping Program.

LEGEND

- +4.0 Ft. NAVD88 Contour (June 2024)
- Projected Shoreline Change (2024 Conditions)
 - +10 Years
 - +20 Years
 - +30 Years

- ▲ Profile Stations
- - Baseline
- Beach Profile Transects
- - Section Area Boundary



TITLE
 Impacted Structure
 and Projected Shoreline Maps
 2024 Beach Monitoring and Stability Assessment
 Currituck County, NC

**COASTAL PROTECTION ENGINEERING
 OF NORTH CAROLINA, INC.**
 4038 Masonboro Loop Road
 Wilmington, NC 28409
 PH (910) 399-1905



Path: E:\Projects\USA\NC\Currituck\2024\Currituck_Shoreline_2024.aprx

NOTES

- 1) Coordinates are in feet based on the North Carolina State Plane Coordinate System, North American Datum of 1983 (NAD83).
- 2) Aerial imagery taken on August 5, 2020 and provided by NOAA.
- 3) Shoreline position based on data collected in June 2024 by Coastal Protection Engineering of North Carolina, Inc.
- 4) Building footprint data is from the North Carolina Floodplain Mapping Program.

LEGEND

- +4.0 Ft. NAVD88 Contour (June 2024)
- Projected Shoreline Change (2024 Conditions)
 - +10 Years
 - +20 Years
 - +30 Years

- ▲ Profile Stations
- - Baseline
- Beach Profile Transects
- - Section Area Boundary



TITLE
 Impacted Structure
 and Projected Shoreline Maps
 2024 Beach Monitoring and Stability Assessment
 Currituck County, NC

**COASTAL PROTECTION ENGINEERING
 OF NORTH CAROLINA, INC.**
 4038 Masonboro Loop Road
 Wilmington, NC 28409
 PH (910) 399-1905



Path: E:\Projects\USA\NC\Currituck\2024\020\20 Currituck Shoreline_2024.aprx

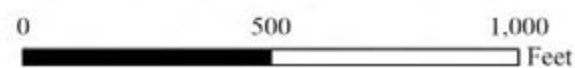
NOTES

- 1) Coordinates are in feet based on the North Carolina State Plane Coordinate System, North American Datum of 1983 (NAD83).
- 2) Aerial imagery taken on August 5, 2020 and provided by NOAA.
- 3) Shoreline position based on data collected in June 2024 by Coastal Protection Engineering of North Carolina, Inc.
- 4) Building footprint data is from the North Carolina Floodplain Mapping Program.

LEGEND

- +4.0 Ft. NAVD88 Contour (June 2024)
- — Baseline
- — Projected Shoreline Change (2024 Conditions)
- +10 Years
- +20 Years
- +30 Years

- ▲ Profile Stations
- — Beach Profile Transects
- — Section Area Boundary



TITLE
Impacted Structure and Projected Shoreline Maps
 2024 Beach Monitoring and Stability Assessment
 Currituck County, NC

COASTAL PROTECTION ENGINEERING OF NORTH CAROLINA, INC.
 4038 Masonboro Loop Road
 Wilmington, NC 28409
 PH (910) 399-1905



Path: E:\Projects\USA\NC\Currituck\2024\Currituck_Shorelines_2024.aprx

NOTES

- 1) Coordinates are in feet based on the North Carolina State Plane Coordinate System, North American Datum of 1983 (NAD83).
- 2) Aerial imagery taken on August 5, 2020 and provided by NOAA.
- 3) Shoreline position based on data collected in June 2024 by Coastal Protection Engineering of North Carolina, Inc.
- 4) Building footprint data is from the North Carolina Floodplain Mapping Program.

LEGEND

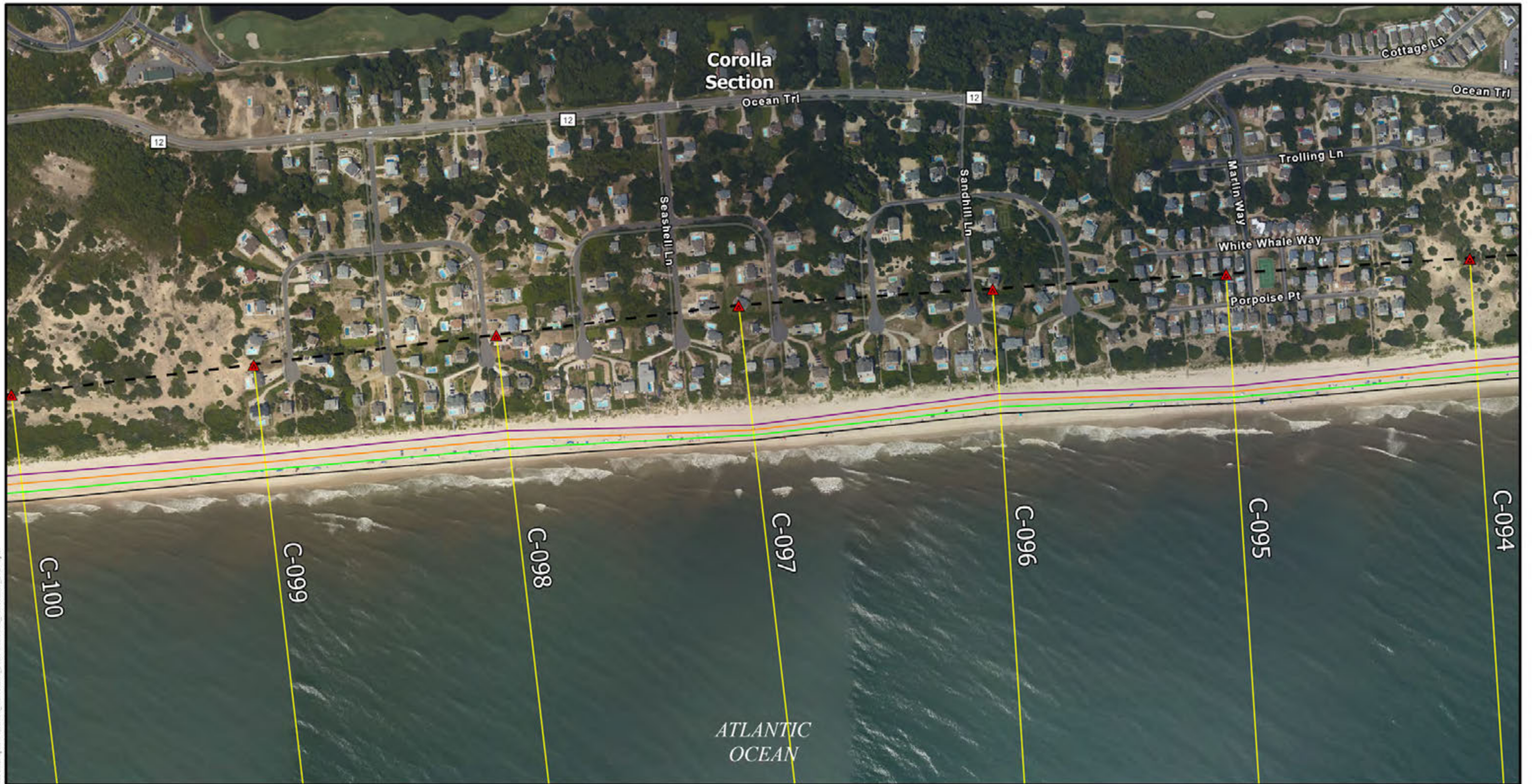
- +4.0 Ft. NAVD88 Contour (June 2024)
- Projected Shoreline Change (2024 Conditions)
 - +10 Years
 - +20 Years
 - +30 Years

- ▲ Profile Stations
- - Baseline
- Beach Profile Transects
- - Section Area Boundary



TITLE
 Impacted Structure
 and Projected Shoreline Maps
 2024 Beach Monitoring and Stability Assessment
 Currituck County, NC

**COASTAL PROTECTION ENGINEERING
 OF NORTH CAROLINA, INC.**
 4038 Masonboro Loop Road
 Wilmington, NC 28409
 PH (910) 399-1905



Path: E:\Projects\USA\NC\Currituck\2024\020\20 Currituck Shoreline_2024.aprx

- NOTES**
- Coordinates are in feet based on the North Carolina State Plane Coordinate System, North American Datum of 1983 (NAD83).
 - Aerial imagery taken on August 5, 2020 and provided by NOAA.
 - Shoreline position based on data collected in June 2024 by Coastal Protection Engineering of North Carolina, Inc.
 - Building footprint data is from the North Carolina Floodplain Mapping Program.

- LEGEND**
- +4.0 Ft. NAVD88 Contour (June 2024)
 - Projected Shoreline Change (2024 Conditions)
 - +10 Years
 - +20 Years
 - +30 Years

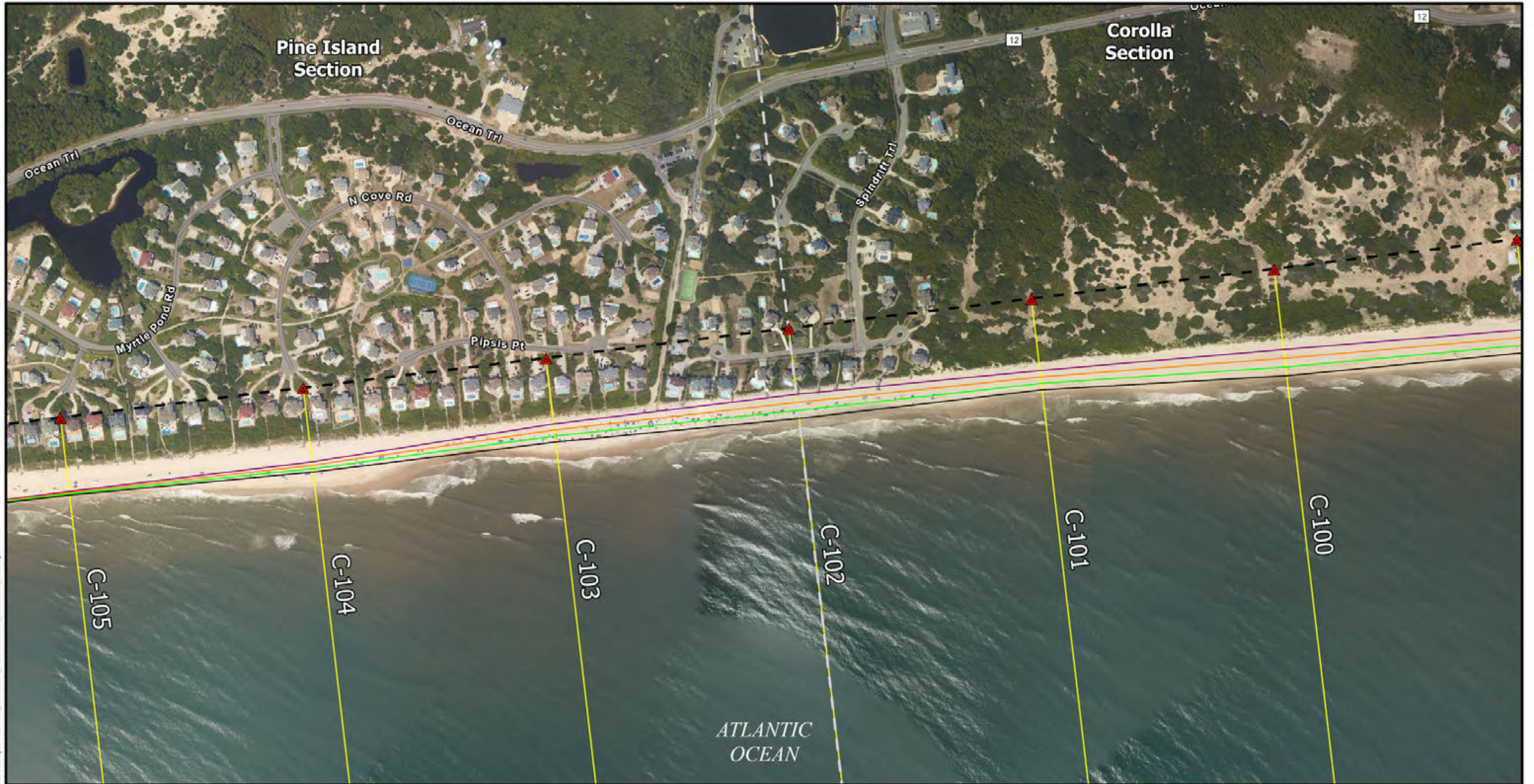
- ▲ Profile Stations
- - Baseline
- Beach Profile Transects
- - Section Area Boundary

0 500 1,000 Feet

TITLE Impacted Structure and Projected Shoreline Maps
2024 Beach Monitoring and Stability Assessment
Currituck County, NC

COASTAL PROTECTION ENGINEERING
OF NORTH CAROLINA, INC.
4038 Masonboro Loop Road
Wilmington, NC 28409
PH (910) 399-1905

Date: 3/19/2025 By: SL Page 19 of 23



Path: E:\Projects\USA\NC\Currituck\2024\Currituck_Shoreline_2024.aprx

- NOTES**
- Coordinates are in feet based on the North Carolina State Plane Coordinate System, North American Datum of 1983 (NAD83).
 - Aerial imagery taken on August 5, 2020 and provided by NOAA.
 - Shoreline position based on data collected in June 2024 by Coastal Protection Engineering of North Carolina, Inc.
 - Building footprint data is from the North Carolina Floodplain Mapping Program.

- LEGEND**
- +4.0 Ft. NAVD88 Contour (June 2024)
 - Projected Shoreline Change (2024 Conditions)
 - +10 Years
 - +20 Years
 - +30 Years

- ▲ Profile Stations
- - Baseline
- Beach Profile Transects
- - Section Area Boundary

0 500 1,000 Feet

TITLE
 Impacted Structure
 and Projected Shoreline Maps
 2024 Beach Monitoring and Stability Assessment
 Currituck County, NC

COASTAL PROTECTION ENGINEERING
 OF NORTH CAROLINA, INC.
 4038 Masonboro Loop Road
 Wilmington, NC 28409
 PH (910) 399-1905

Date: 3/19/2025 By: SL Page 20 of 23



Path: E:\Projects\USA\NC\Currituck\2024\Currituck_Shorelines_2024.aprx

- NOTES**
- Coordinates are in feet based on the North Carolina State Plane Coordinate System, North American Datum of 1983 (NAD83).
 - Aerial imagery taken on August 5, 2020 and provided by NOAA.
 - Shoreline position based on data collected in June 2024 by Coastal Protection Engineering of North Carolina, Inc.
 - Building footprint data is from the North Carolina Floodplain Mapping Program.

- LEGEND**
- +4.0 Ft. NAVD88 Contour (June 2024)
 - Projected Shoreline Change (2024 Conditions)
 - +10 Years
 - +20 Years
 - +30 Years

- ▲ Profile Stations
- - Baseline
- Beach Profile Transects
- - Section Area Boundary

0 500 1,000 Feet

TITLE Impacted Structure and Projected Shoreline Maps
2024 Beach Monitoring and Stability Assessment
Currituck County, NC

COASTAL PROTECTION ENGINEERING
OF NORTH CAROLINA, INC.
4038 Masonboro Loop Road
Wilmington, NC 28409
PH (910) 399-1905

Date: 3/19/2025 By: SL Page 21 of 23



Path: E:\Projects\USA\NC\Currituck\2024\Currituck_Shortlines_2024.aprx

- NOTES**
- 1) Coordinates are in feet based on the North Carolina State Plane Coordinate System, North American Datum of 1983 (NAD83).
 - 2) Aerial imagery taken on August 5, 2020 and provided by NOAA.
 - 3) Shoreline position based on data collected in June 2024 by Coastal Protection Engineering of North Carolina, Inc.
 - 4) Building footprint data is from the North Carolina Floodplain Mapping Program.

- LEGEND**
- +4.0 Ft. NAVD88 Contour (June 2024)
 - Projected Shoreline Change (2024 Conditions)
 - +10 Years
 - +20 Years
 - +30 Years

- ▲ Profile Stations
- - Baseline
- Beach Profile Transects
- - Section Area Boundary

TITLE Impacted Structure and Projected Shoreline Maps
2024 Beach Monitoring and Stability Assessment
Currituck County, NC

COASTAL PROTECTION ENGINEERING
OF NORTH CAROLINA, INC.
4038 Masonboro Loop Road
Wilmington, NC 28409
PH (910) 399-1905

Date: 3/19/2025 By: SL Page 22 of 23



Path: E:\Projects\USA\NC\Currituck\2024\Currituck_Shoreline_2024.aprx

- NOTES**
- Coordinates are in feet based on the North Carolina State Plane Coordinate System, North American Datum of 1983 (NAD83).
 - Aerial imagery taken on August 5, 2020 and provided by NOAA.
 - Shoreline position based on data collected in June 2024 by Coastal Protection Engineering of North Carolina, Inc.
 - Building footprint data is from the North Carolina Floodplain Mapping Program.

- LEGEND**
- +4.0 Ft. NAVD88 Contour (June 2024)
 - Projected Shoreline Change (2024 Conditions)
 - +10 Years
 - +20 Years
 - +30 Years

- ▲ Profile Stations
- - Baseline
- Beach Profile Transects
- - Section Area Boundary

0 500 1,000 Feet

TITLE Impacted Structure and Projected Shoreline Maps
2024 Beach Monitoring and Stability Assessment
Currituck County, NC

COASTAL PROTECTION ENGINEERING
OF NORTH CAROLINA, INC.
4038 Masonboro Loop Road
Wilmington, NC 28409
PH (910) 399-1905

Date: 3/19/2025 By: SL Page 23 of 23